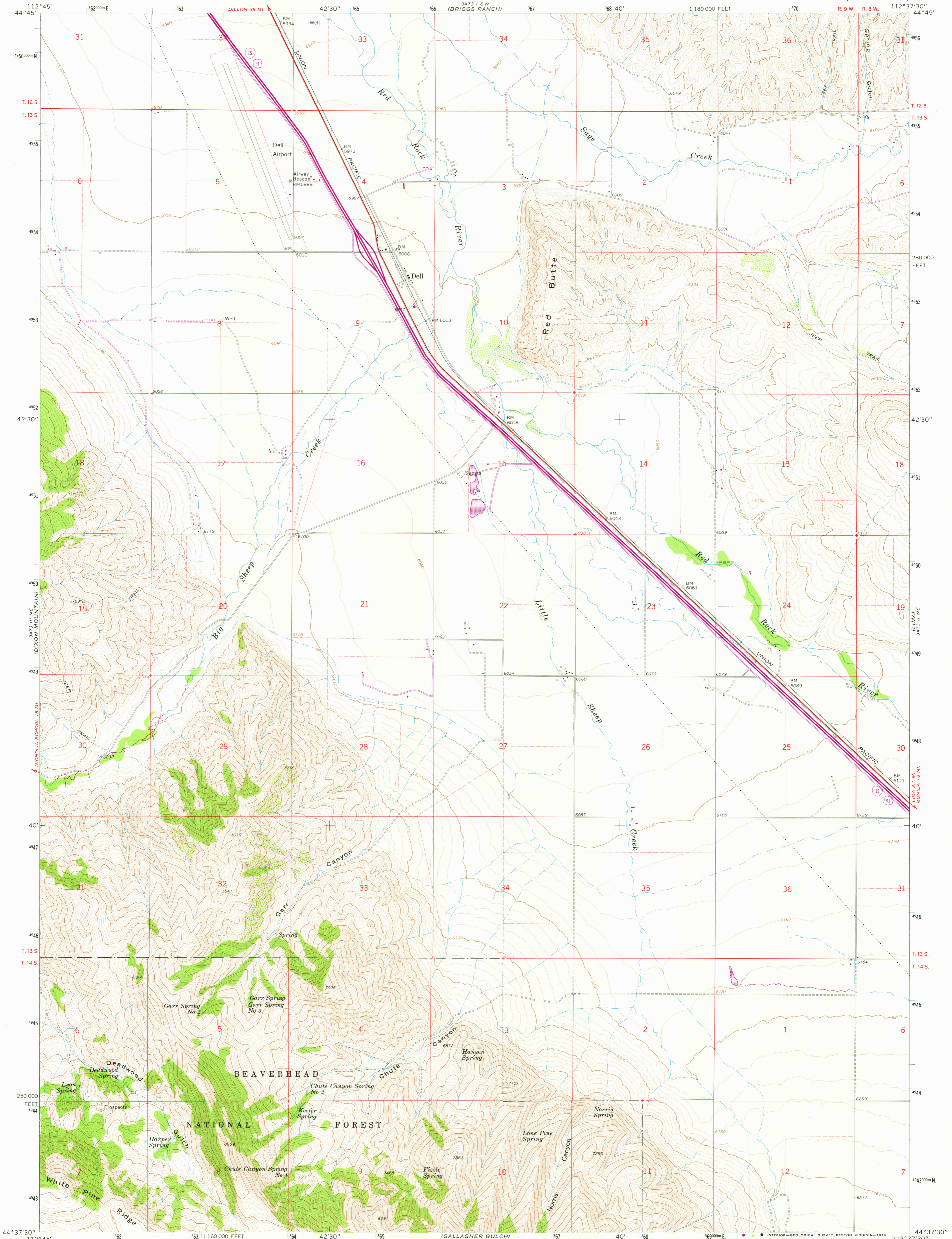
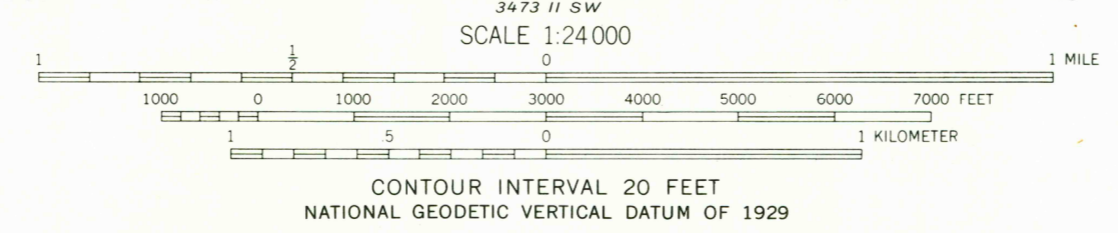
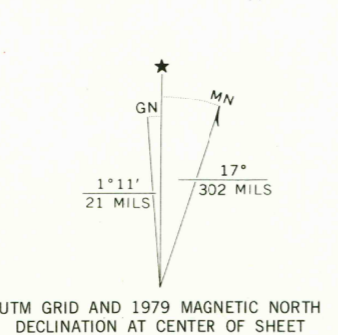


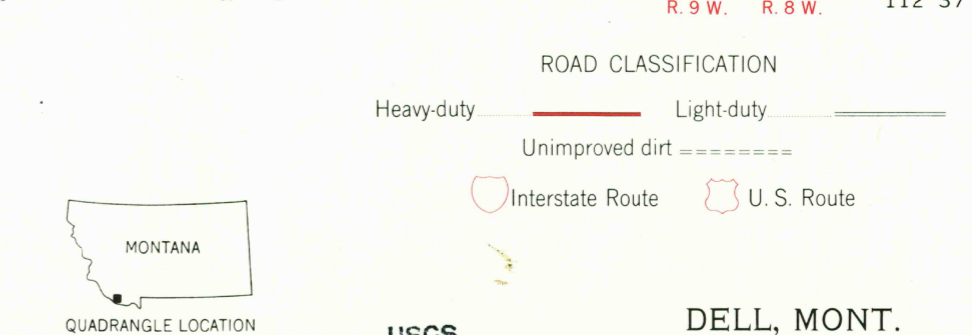
3473 SE
(ROCK ISLAND RANCH)



Mapped, edited, and published by the Geological Survey
Control by USGS and USC&GS
Topography by photogrammetric methods from aerial photographs taken 1964. Field checked 1965
Polyconic projection. 1927 North American datum
10,000-foot grid based on Montana coordinate system, south zone
1000-meter Universal Transverse Mercator grid ticks, zone 12, shown in blue
Fine red dashed lines indicate selected fence lines
There may be private inholdings within the boundaries of the National or State reservations shown on this map
Revisions shown in purple and woodland compiled from aerial photographs taken 1976 and other source data
This information not field checked. Map edited 1979



CONTOUR INTERVAL 20 FEET
NATIONAL GEODETIC VERTICAL DATUM OF 1929
THIS MAP COMPLIES WITH NATIONAL MAP ACCURACY STANDARDS
FOR SALE BY U. S. GEOLOGICAL SURVEY, DENVER, COLORADO 80225, OR RESTON, VIRGINIA 22092
A FOLDER DESCRIBING TOPOGRAPHIC MAPS AND SYMBOLS IS AVAILABLE ON REQUEST



USGS
Historical File
Topographic Division
DELL, MONT.
N4437.5—W11237.5/7.5
1965
PHOTOREVISED 1979
AMS 3473 II NW—SERIES V894

SEP 19 1979

784