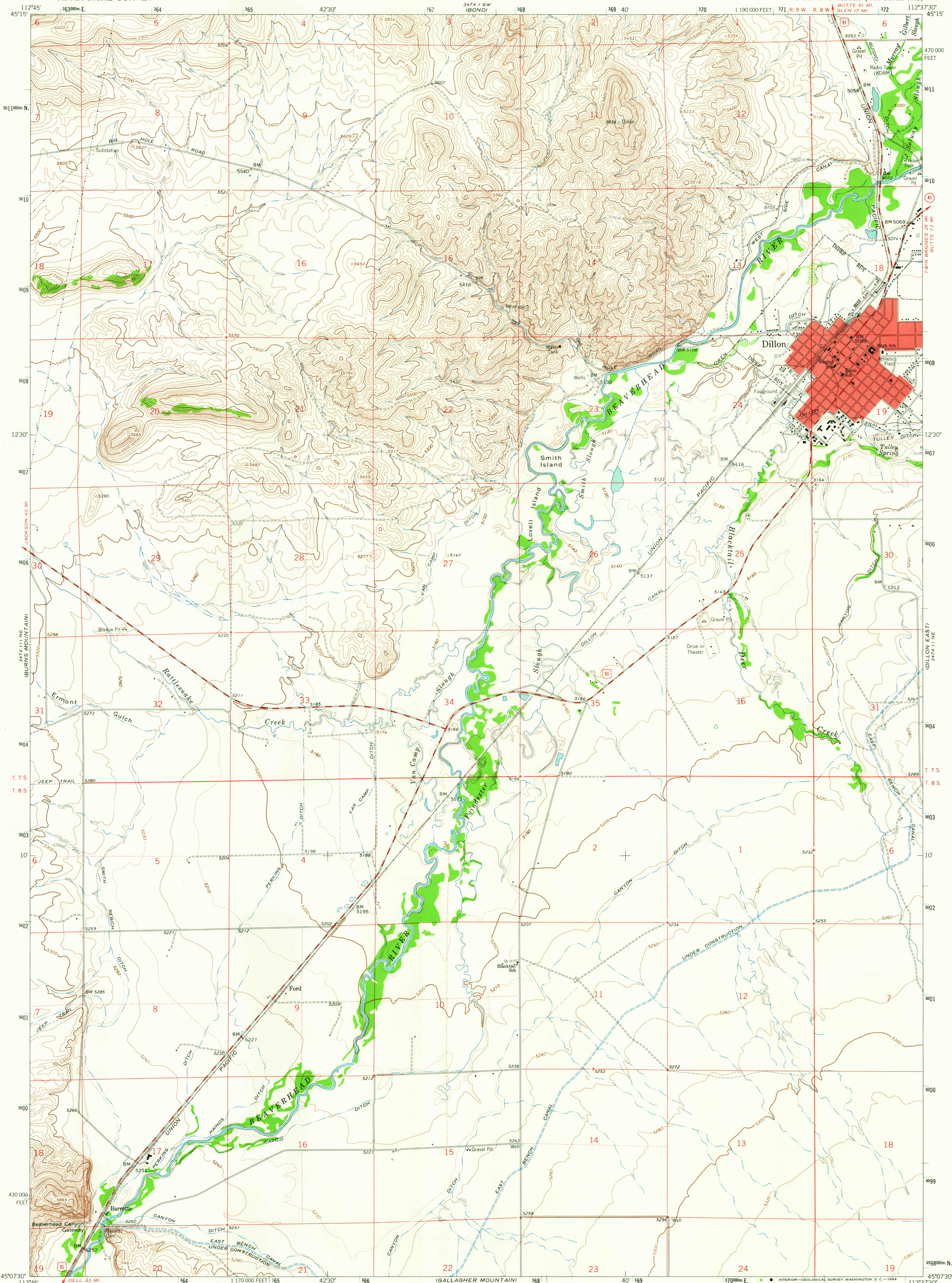


UNITED STATES  
DEPARTMENT OF THE INTERIOR  
GEOLOGICAL SURVEY

DILLON WEST QUADRANGLE  
MONTANA - BEAVERHEAD CO.  
7.5 MINUTE SERIES (TOPOGRAPHIC)



Mapped, edited, and published by the Geological Survey

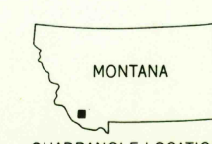
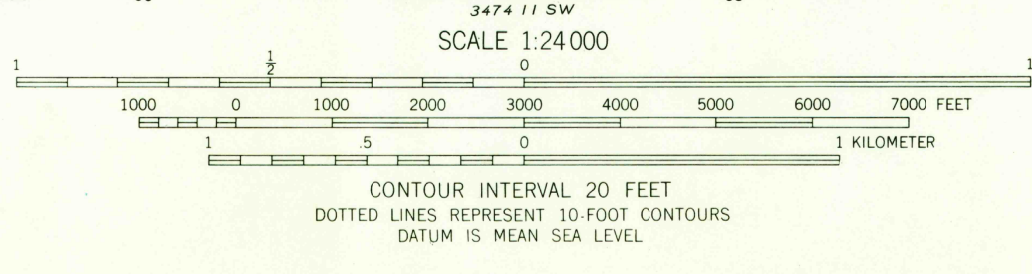
Control by USGS and USC&GS

Topography by photogrammetric methods from aerial photographs taken 1960. Field checked 1963

Polygonic projection. 1927 North American datum  
10,000-foot grid based on Montana coordinate system, south zone  
1000 meter Universal Transverse Mercator grid ticks,  
zone 12, shown in blue

Red tint indicates area in which only landmark buildings are shown

Fine red dashed lines indicate selected fence lines



U.S.G.S.  
FILE COPY  
TOPOGRAPHIC DIVISION

DILLON WEST, MONT.  
N4507.5-W11237.5/7.5  
1963

AMS 3474 11 NW-SERIES V894

USGS  
Historical File  
Topographic Division

SEP 2 1964

2540