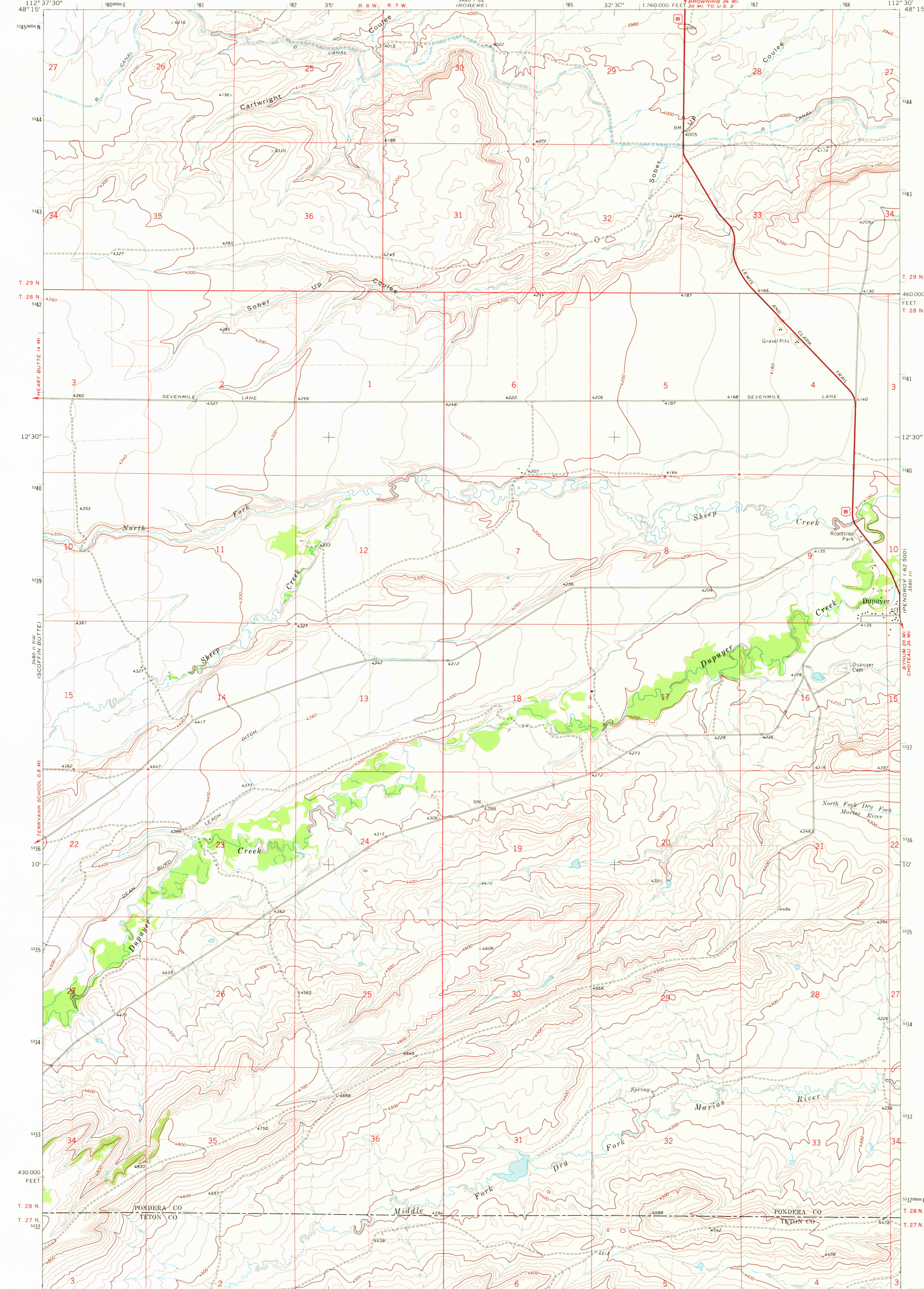
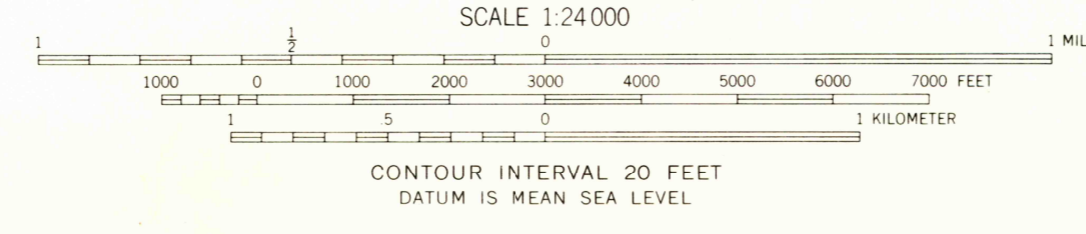
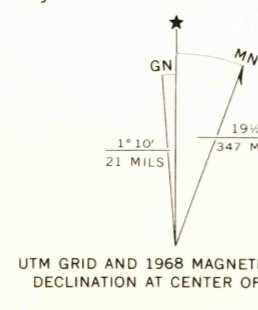


UNITED STATES
DEPARTMENT OF THE INTERIOR
GEOLOGICAL SURVEY

DUPUYER WEST QUADRANGLE
MONTANA
7.5 MINUTE SERIES (TOPOGRAPHIC)



Mapped, edited, and published by the Geological Survey
Control by USGS and USC&GS
Topography by photogrammetric methods from aerial photographs taken 1966. Field checked 1968
Polyconic projection. 1927 North American datum
10,000-foot grid based on Montana coordinate system, north zone
1000-meter Universal Transverse Mercator grid ticks, zone 12, shown in blue
Fine red dashed lines indicate selected fence lines



ROAD CLASSIFICATION
Primary highway, all weather, hard surface
Light-duty road, all weather, improved surface
Unimproved road, fair or dry weather
U.S. Route



DUPUYER WEST, MONT.
N 4807.5—W 11230.7.5

THIS MAP COMPLIES WITH NATIONAL MAP ACCURACY STANDARDS
FOR SALE BY U.S. GEOLOGICAL SURVEY, DENVER, COLORADO 80225, OR WASHINGTON, D. C. 20542
A FOLDER DESCRIBING TOPOGRAPHIC MAPS AND SYMBOLS IS AVAILABLE ON REQUEST

1968
AMS 3480 II NE—SERIES V894

JUL 3 1972
Denver 3000
USGS HISTORICAL FILE TOPOGRAPHIC DIVISION