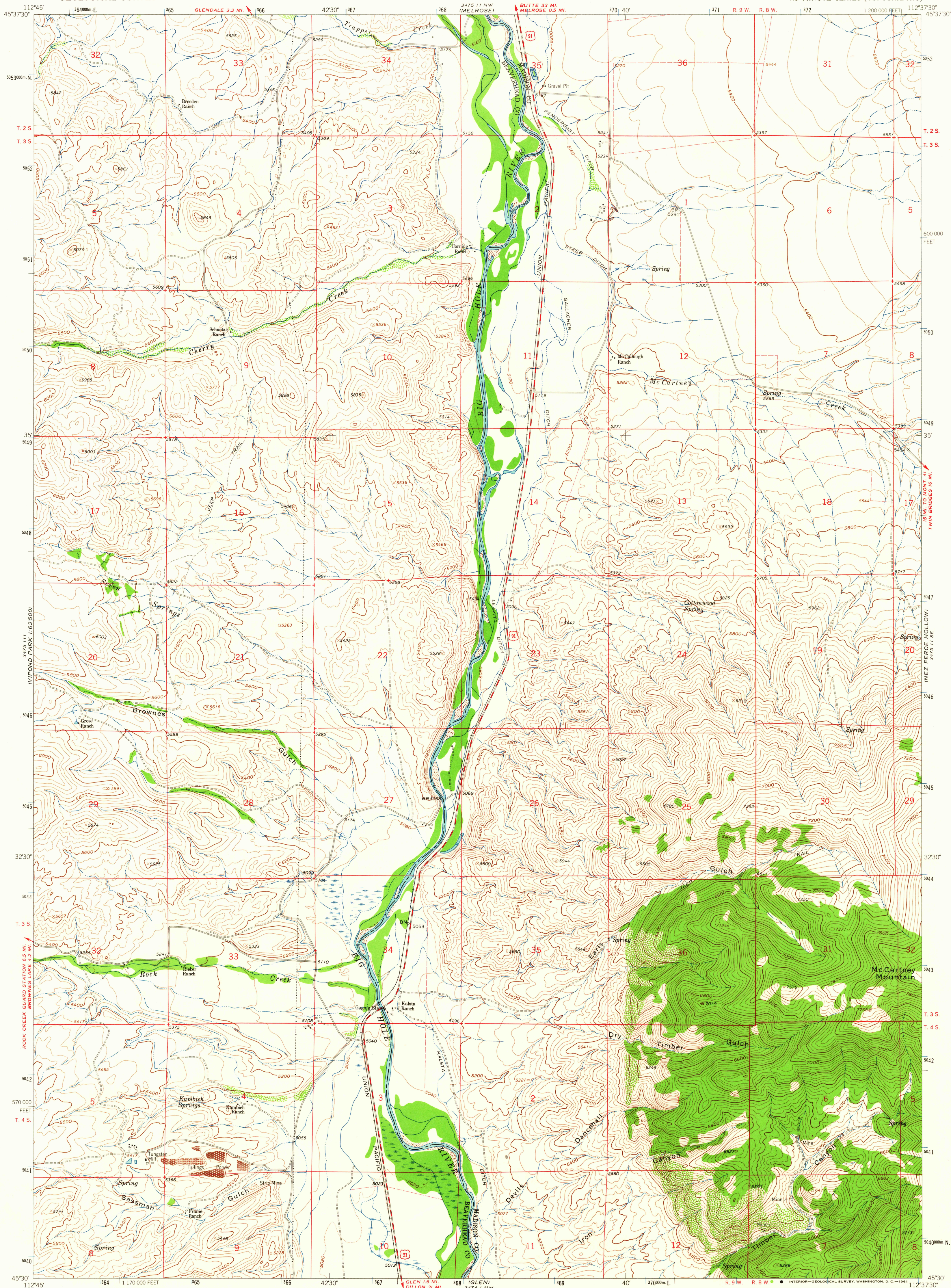


UNITED STATES  
DEPARTMENT OF THE INTERIOR  
GEOLOGICAL SURVEY

EARLS GULCH QUADRANGLE  
MONTANA  
7.5 MINUTE SERIES (TOPOGRAPHIC)



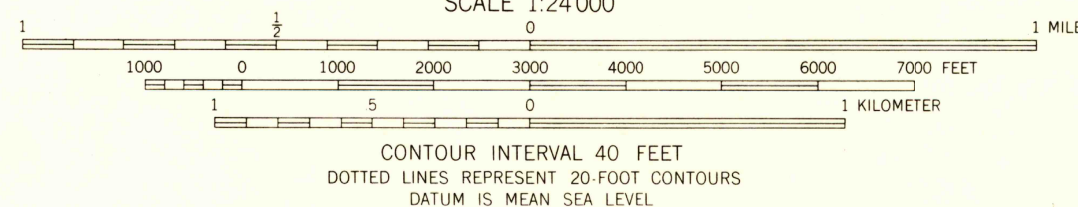
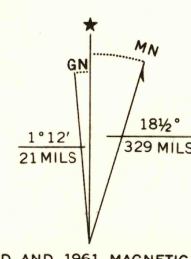
Maped, edited, and published by the Geological Survey

Control by USGS and USC&GS

Topography by photogrammetric methods from aerial  
photographs taken 1956. Field checked 1961

Polyconic projection. 1927 North American datum  
10,000-foot grid based on Montana coordinate system, south zone  
1000-meter Universal Transverse Mercator grid ticks,  
zone 12, shown in blue

Fine red dashed lines indicate selected fence lines



ROAD CLASSIFICATION  
Medium-duty ——— Light-duty ———  
Unimproved dirt =====  
U.S. Route

EARLS GULCH, MONT.  
N4530-W11237.5/7.5

1961

AMS 3475 11 SW-SERIES V894

USGS  
Historical File  
Topographic Division

SEP 2 1964

2260

U.S.G.S.  
FILE COPY  
TOPOGRAPHIC DIVISION