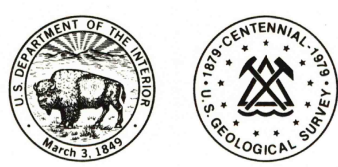
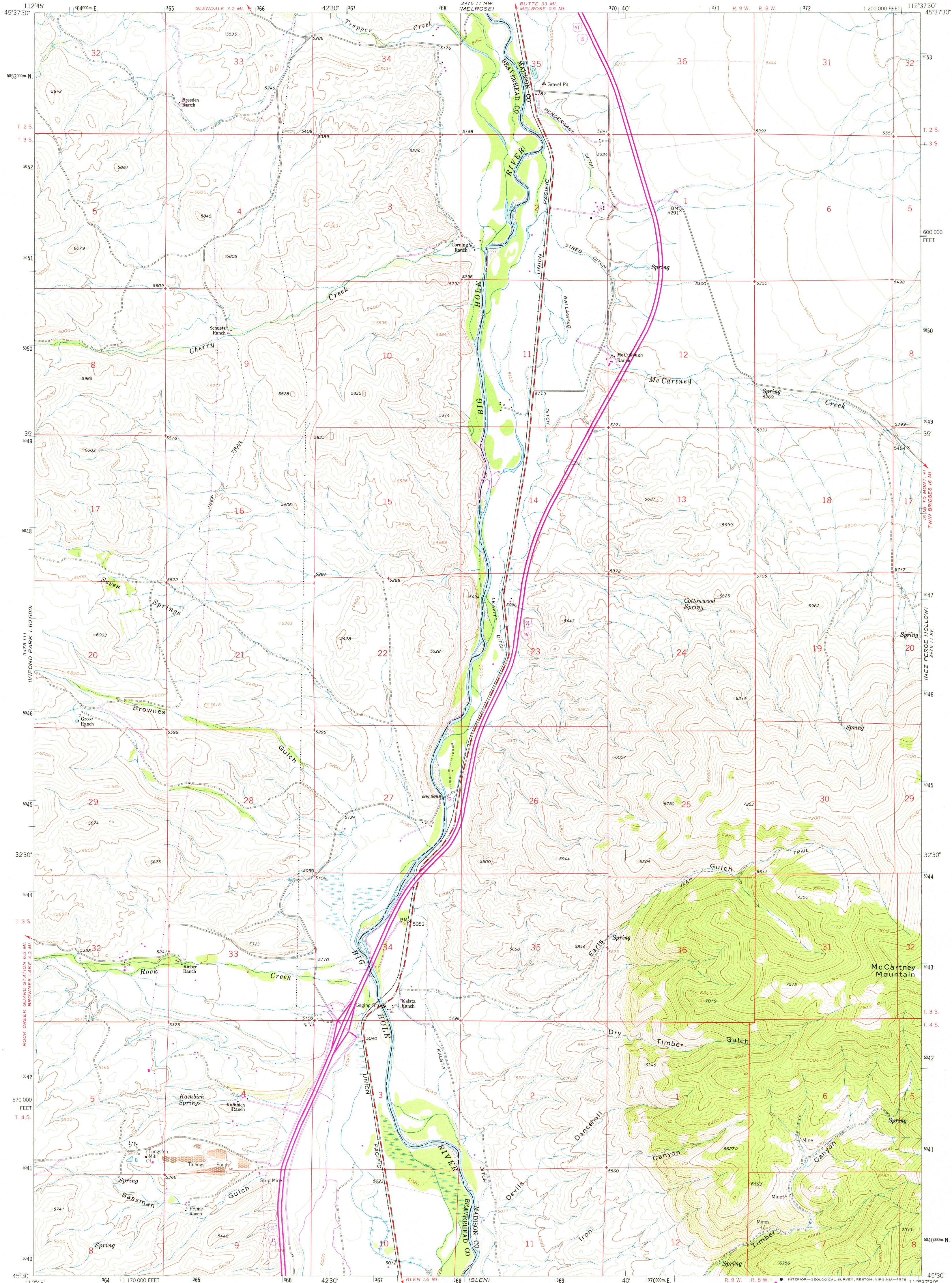


UNITED STATES
DEPARTMENT OF THE INTERIOR
GEOLOGICAL SURVEY



EARLS GULCH QUADRANGLE
MONTANA
7.5 MINUTE SERIES (TOPOGRAPHIC)



Mapped, edited, and published by the Geological Survey

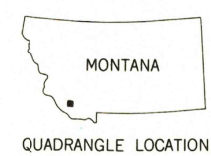
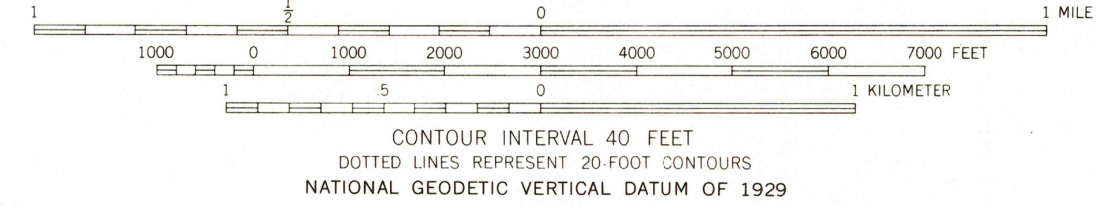
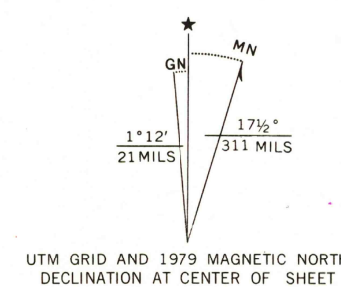
Control by USGS and USC&GS

Topography by photogrammetric methods from aerial photographs taken 1956. Field checked 1961

Polyconic projection. 1927 North American datum
10,000-foot grid based on Montana coordinate system, south zone
1000 meter Universal Transverse Mercator grid ticks, zone 12, shown in blue

Fine red dashed lines indicate selected fence lines

Revisions shown in purple and woodland compiled from aerial photographs taken 1976 and other source data
This information not field checked. Map edited 1979



ROAD CLASSIFICATION	
Primary highway, all weather, hard surface	Light-duty road, all weather, improved surface
Secondary highway, all weather, hard surface	Unimproved road, fair or dry weather
Interstate Route	U. S. Route
	State Route

EARLS GULCH, MONT.
N4530 - W11237 5/7.5

1961
PHOTOREVISED 1979
AMS 3475 11 SW - SERIES V894

USGS
Historical File
Topographic Division
DEC 11 1979