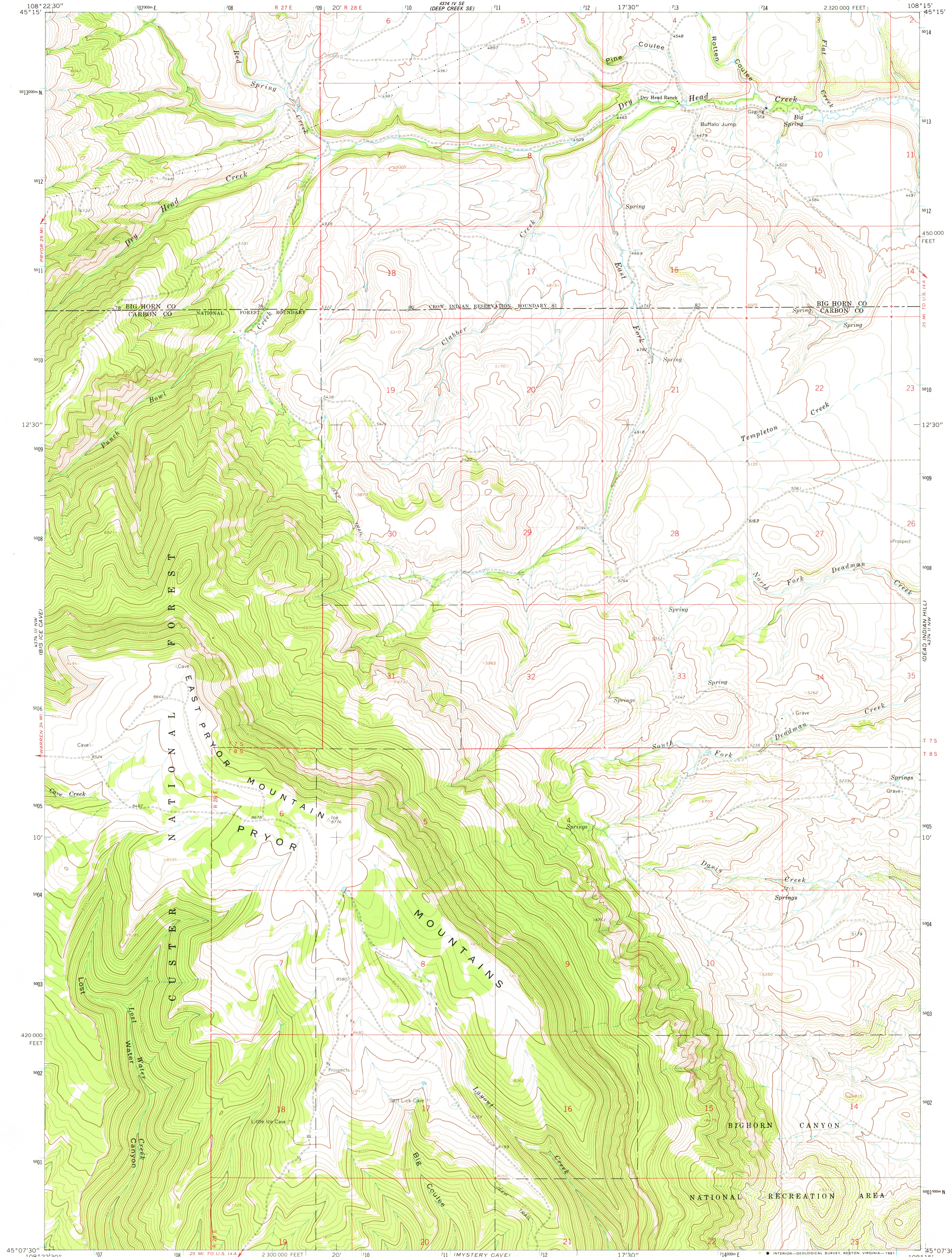


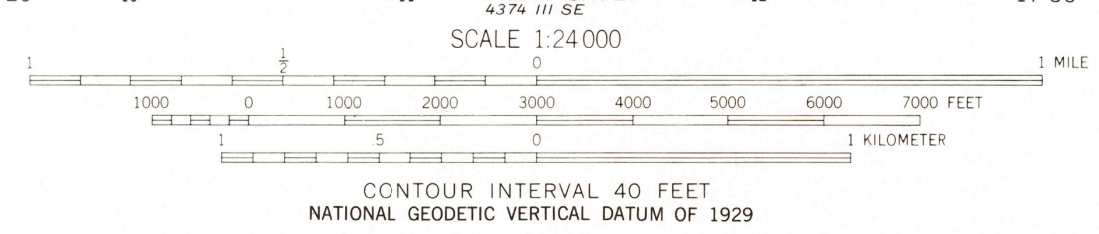
524 IV NW
DEEP CREEK SW

4374 IV NE
HORSE COULEE



Mapped, edited, and published by the Geological Survey as part of the Department of the Interior program for the development of the Missouri River Basin
Control by USGS and USC&GS
Topography by photogrammetric methods from aerial photographs taken 1963. Field checked 1964
Polyconic projection. 1927 North American datum 10,000-foot grid based on Montana coordinate system, south zone
1000-meter Universal Transverse Mercator grid ticks, zone 12, shown in blue
Fine red dashed lines indicate selected fence lines
Where omitted, land lines have not been established

To place on the predicted North American Datum 1983
move the projection lines 8 meters north and
53 meters east as shown by dashed corner ticks



ROAD CLASSIFICATION
Unimproved dirt -----

THIS MAP COMPLIES WITH NATIONAL MAP ACCURACY STANDARDS
FOR SALE BY U. S. GEOLOGICAL SURVEY, DENVER, COLORADO 80225, OR RESTON, VIRGINIA 22092
A FOLDER DESCRIBING TOPOGRAPHIC MAPS AND SYMBOLS IS AVAILABLE ON REQUEST

There may be private inholdings within the boundaries of the National or State reservations shown on this map
Map photinspected 1978
No major culture or drainage changes observed

EAST PRYOR MOUNTAIN, MONT.
N4507.5-W10815.7.5
1964
PHOTOINSPECTED 1978
DMA 4374 III NE-SERIES V894



4374 III NW
HORSE COULEE

524 III NW
DEEP CREEK SW

1000
RETURN TO:
USGS NMD HISTORICAL MAP ARCHIVES