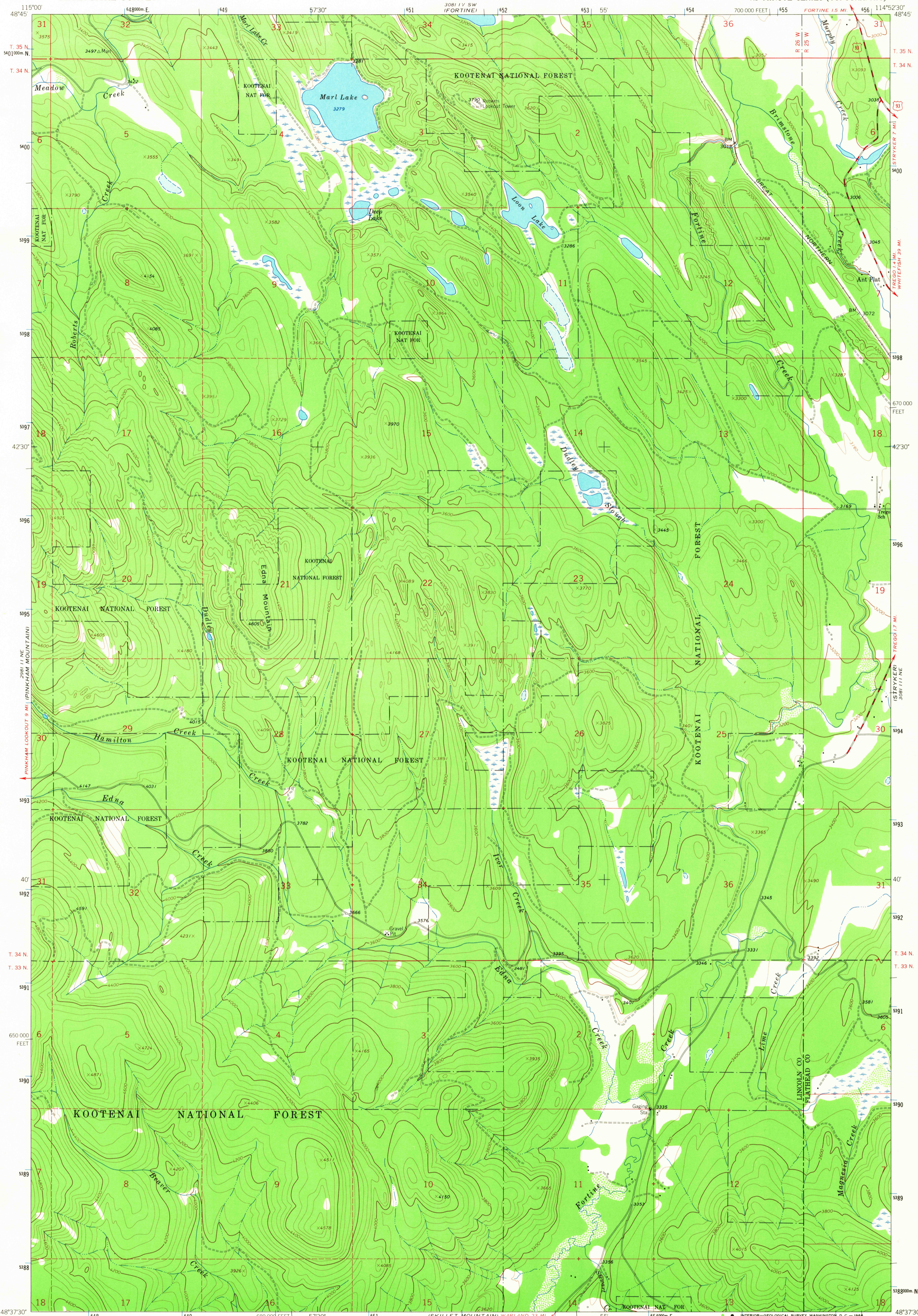


UNITED STATES  
DEPARTMENT OF THE INTERIOR  
GEOLOGICAL SURVEY

EDNA MOUNTAIN QUADRANGLE  
MONTANA  
7.5 MINUTE SERIES (TOPOGRAPHIC)



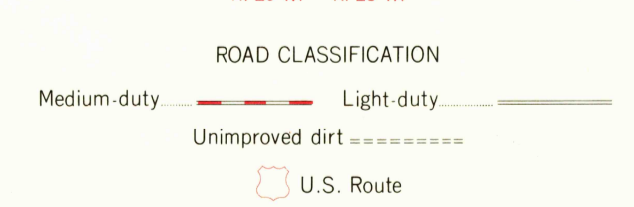
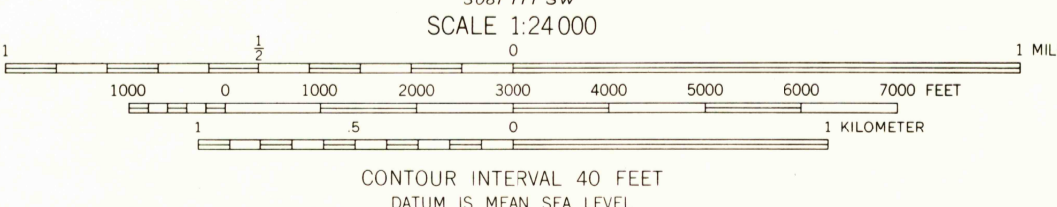
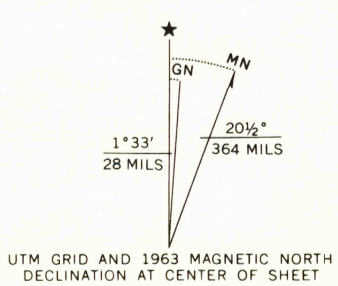
DAVIS MOUNTAIN  
2011 SE

Mapped, edited, and published by the Geological Survey

Control by USGS, USC&GS, and U.S. Forest Service

Topography by photogrammetric methods from aerial photographs taken 1962. Field checked 1963

Polyconic projection. 1927 North American datum  
10,000-foot grid based on Montana coordinate system, north zone  
1000-meter Universal Transverse Mercator grid ticks, zone 11, shown in blue



USGS  
Historical File  
Topographic Division

U.S.G.S.  
FOUR COPY  
TOPOGRAPHIC DIVISION

EDNA MOUNTAIN, MONT.  
N4837.5-W11452.5/7.5

1963

AMS 3081 111 NW - SERIES V894

2215