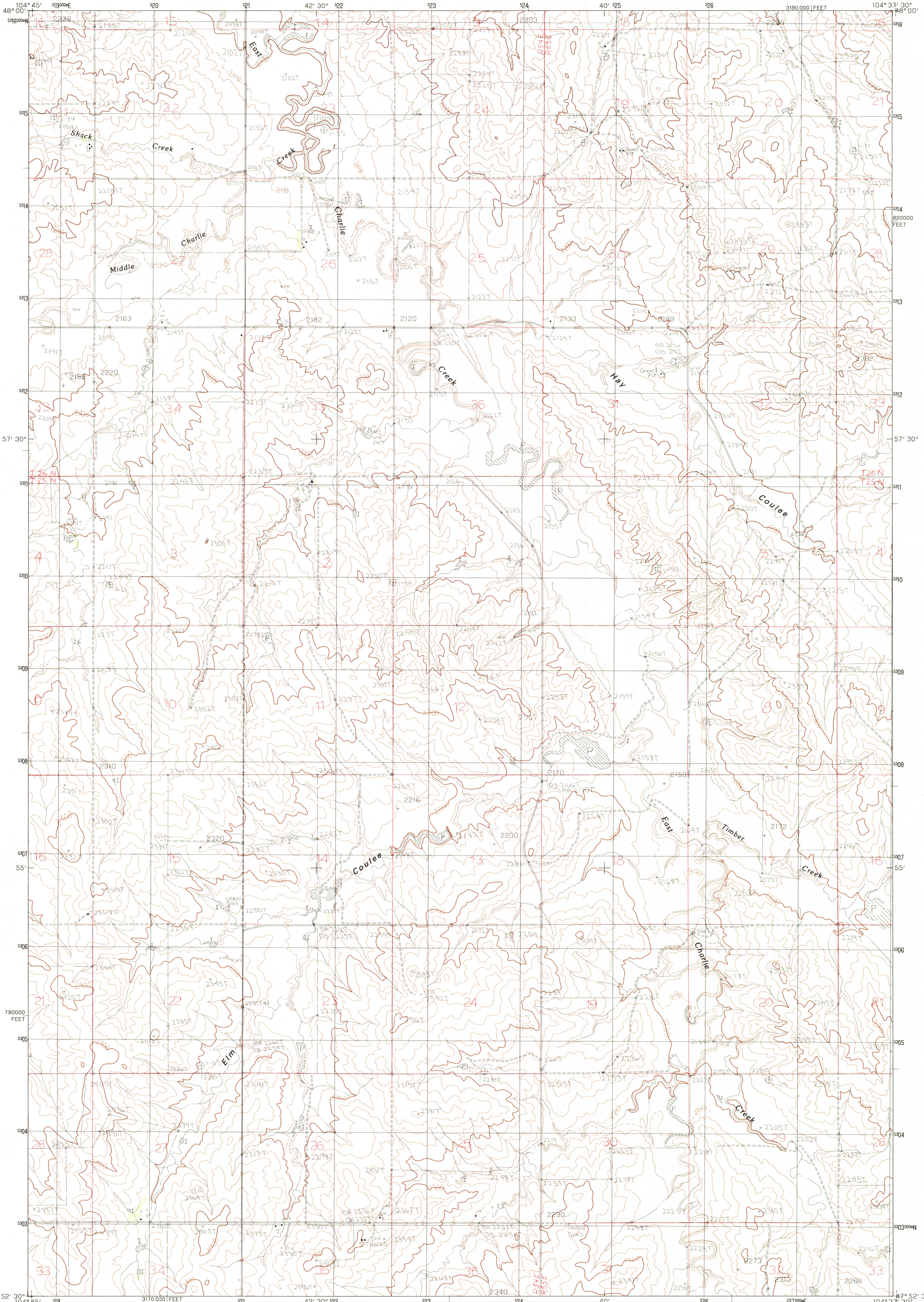


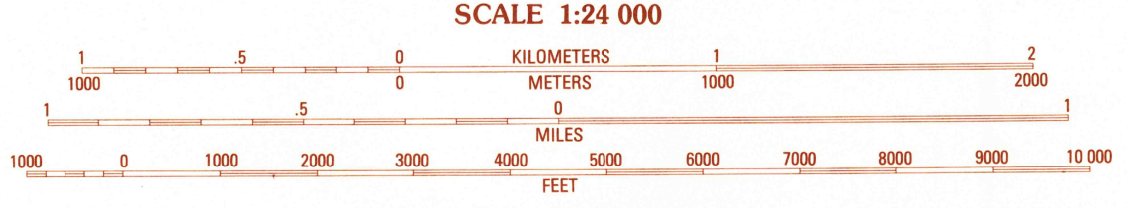
UNITED STATES  
DEPARTMENT OF THE INTERIOR  
GEOLOGICAL SURVEY

ELM COULEE QUADRANGLE  
MONTANA-RICHLAND CO.  
7.5 MINUTE SERIES (TOPOGRAPHIC)



PRODUCED BY THE UNITED STATES GEOLOGICAL SURVEY  
CONTROL BY USGS, NOS NOAA  
COMPILED FROM AERIAL PHOTOGRAPHS TAKEN 1976  
FIELD CHECKED 1977 MAP EDITED 1983  
PROJECTION LAMBERT CONFORMAL CONIC  
GRID: 1000-METER UNIVERSAL TRANSVERSE MERCATOR ZONE 13  
10,000-FOOT STATE GRID TICKS MONTANA, CENTRAL ZONE  
UTM GRID DECLINATION 914 EAST  
1983 MAGNETIC NORTH DECLINATION 13 EAST  
VERTICAL DATUM NATIONAL GEODETIC VERTICAL DATUM OF 1929  
HORIZONTAL DATUM 1927 NORTH AMERICAN DATUM  
To place on the predicted North American Datum of 1983, move  
the projection lines as shown by dashed corner ticks  
(2 meters north and 39 meters east)  
There may be private inholdings within the boundaries of any  
Federal and State Reservations shown on this map

**PROVISIONAL MAP**  
Produced from original  
manuscript drawings. Informa-  
tion shown as of date of  
field check.



SCALE 1:24 000  
CONTOUR INTERVAL 20 FEET  
DASHED LINES REPRESENT 10-FOOT CONTOURS  
To convert meters to feet multiply by 3.2808  
To convert feet to meters multiply by .3048

THIS MAP COMPLIES WITH NATIONAL MAP ACCURACY STANDARDS  
FOR SALE BY U.S. GEOLOGICAL SURVEY, DENVER, COLORADO 80225  
OR RESTON, VIRGINIA 22092



QUADRANGLE LOCATION

**ROAD LEGEND**

Improved Road .....  
Unimproved Road .....  
Trail .....

Interstate Route U.S. Route State Route

1	2	3	1 Frog Coulee
			2 Twinnie Creek
			3 Dougout Creek
			4 Elm Coulee
			5 Andes
			6 Cards Coulee
			7 Three Buttes Creek
			8 West
			9 Three Buttes Creek
			10 East

ELM COULEE, MONTANA  
PROVISIONAL EDITION 1983

47104-H6-TF-024

JUL 15 1983

RETURN TO:  
USGS AND HISTORICAL MAP ARCHIVES