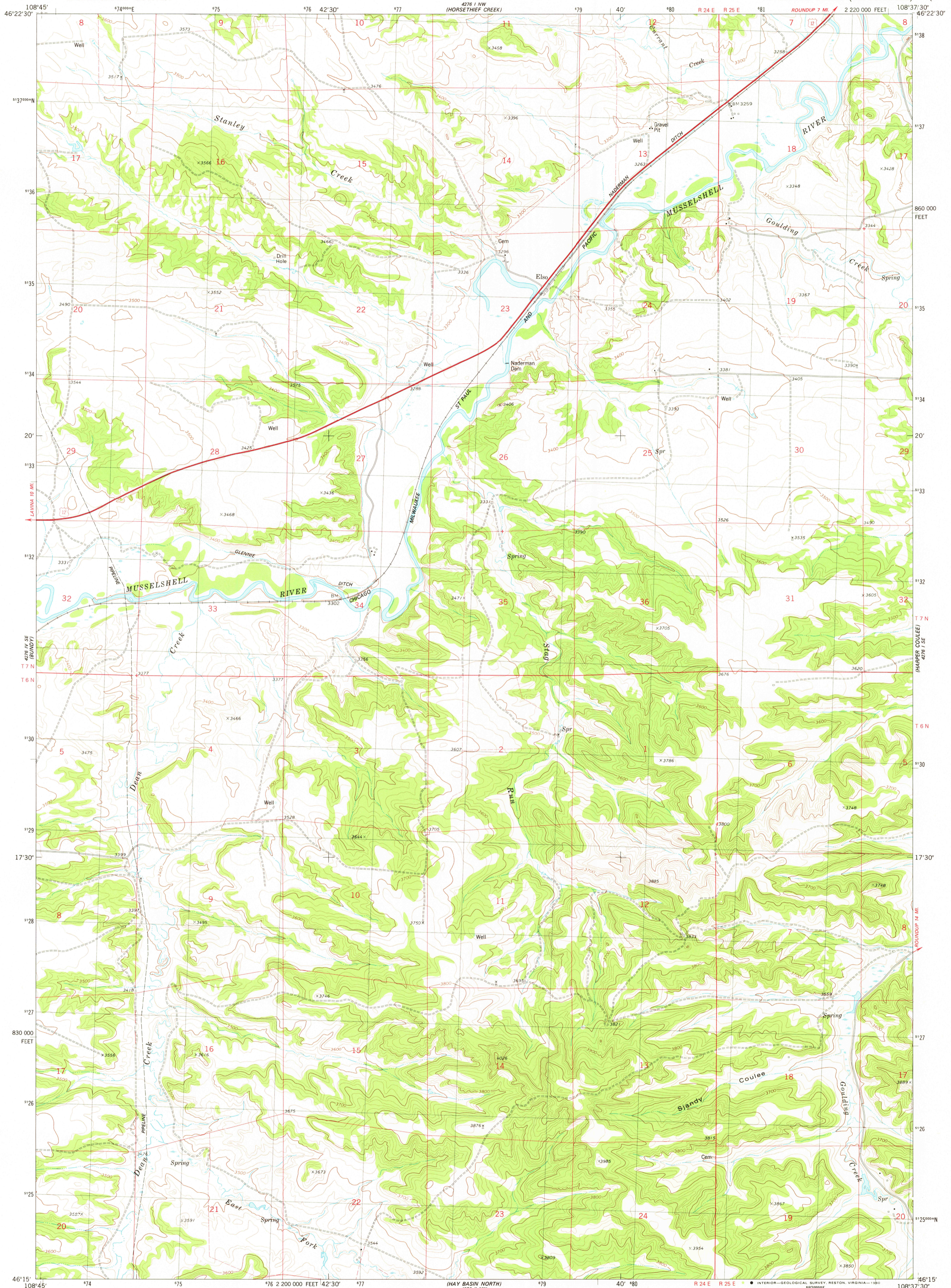


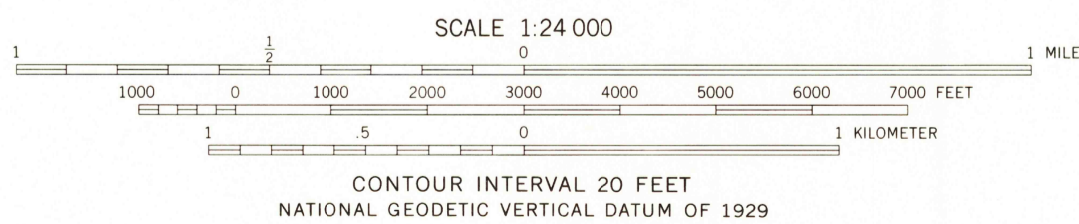
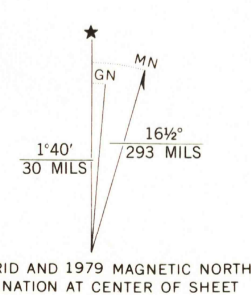
UNITED STATES
DEPARTMENT OF THE INTERIOR
GEOLOGICAL SURVEY

ELSO QUADRANGLE
MONTANA - MUSSELSHELL CO.
7.5 MINUTE SERIES (TOPOGRAPHIC)



Mapped, edited, and published by the Geological Survey

Control by USGS and NOS/NOAA
Topography by photogrammetric methods from aerial photographs taken 1973. Field checked 1974. Map edited 1979
Projection and 10,000-foot grid ticks: Montana coordinate system, south zone (Lambert conformal conic) 1000-meter Universal Transverse Mercator grid, zone 12 1927 North American datum
To place on the predicted North American Datum 1983 move the projection lines 8 meters north and 54 meters east as shown by dashed corner ticks
Fine red dashed lines indicate selected fence lines



SCALE 1:24 000
CONTOUR INTERVAL 20 FEET
NATIONAL GEODETIC VERTICAL DATUM OF 1929



ROAD CLASSIFICATION
Primary highway, hard surface
Secondary highway, hard surface
Unimproved road
Light-duty road, hard or improved surface
Interstate Route
U. S. Route
State Route

USGS
Historical File
Topographic Division

ELSO, MONT.
N4615-W10837.5/7.5
1979

JUN - 5 1980