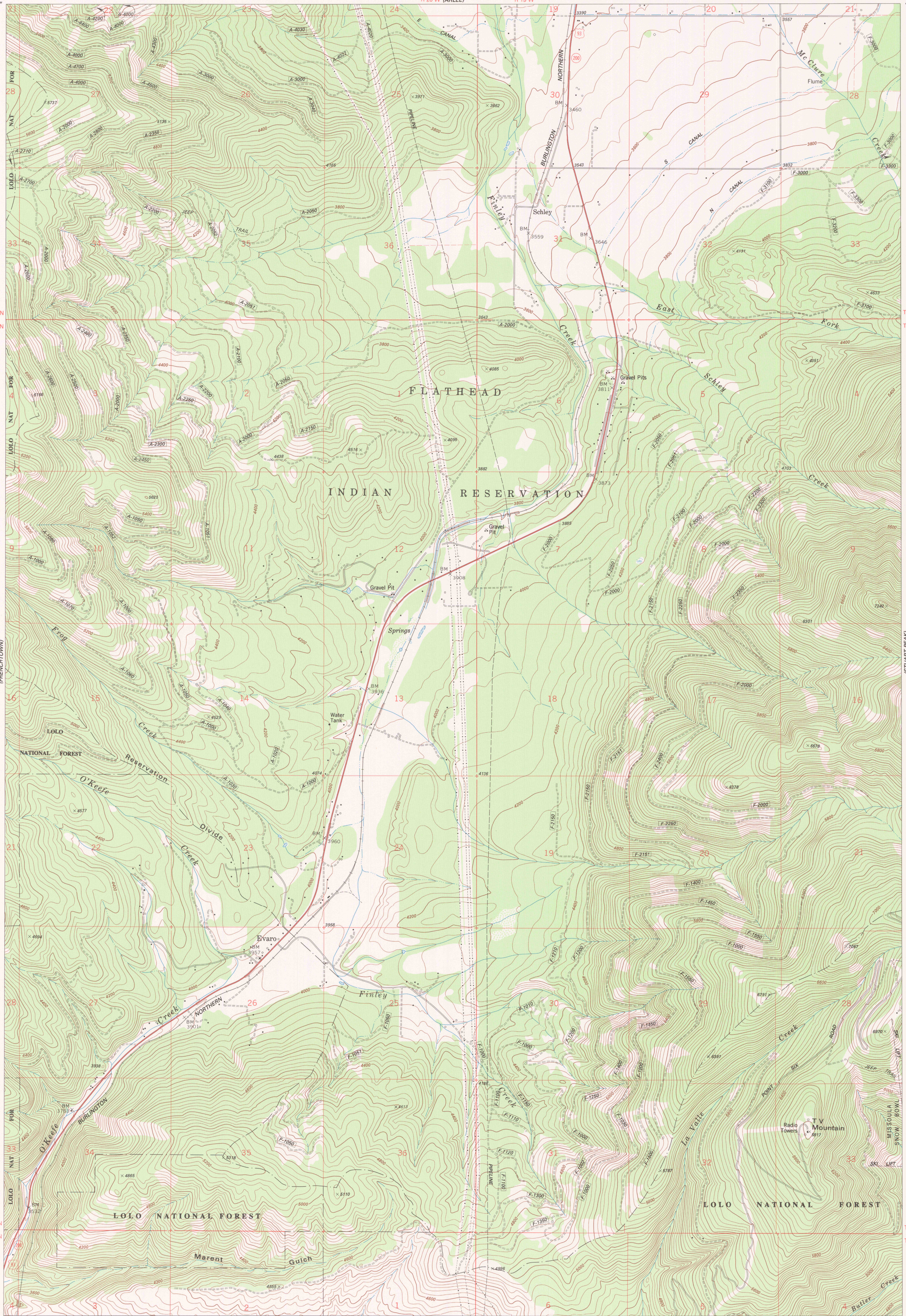


114°07'30"  
 47°07'30"

114°00'  
 47°07'30"

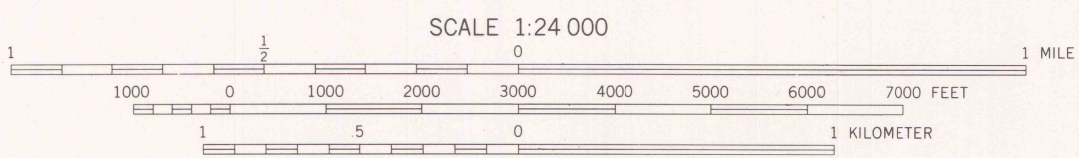


47°00'  
 114°07'30"

47°00'  
 114°00"

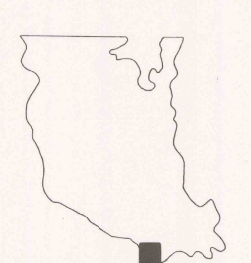
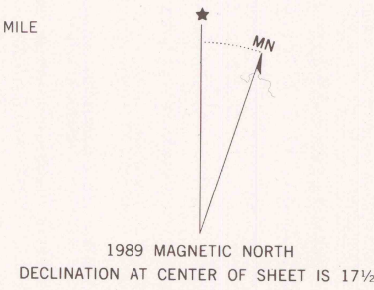
**LEGEND**

<b>ROADS</b>	<b>BOUNDARIES</b>
Paved road	County
Surfaced light duty or improved dirt road	Reservation
Unimproved dirt road	Tribal Wilderness
Four wheel drive trail	Tribal Primitive Area
Route designation shield	Power transmission line
<b>RAILROADS</b>	CPI Plot location
Single track	Aerial photo centers 1960 & 1961 flight
<b>LAND LINES</b>	Indicated corner
Surveyed	Found corner
Primitive	
Fence lines	



CONTOUR INTERVAL 40 FEET  
 DATUM IS MEAN SEA LEVEL  
 NATIONAL GEODETIC VERTICAL DATUM OF 1929  
 CONTROL BY USGS AND NOS/NOAA

Prepared by the Geological Survey for  
 the Bureau of Indian Affairs, Flathead Agency  
 Compiled in 1989 from USGS 1:24,000-scale quadrangle dated 1984  
 Revised from aerial photographs taken 1974 and other source data provided by BIA



RETURN TO:  
 USGS NHD HISTORICAL MAP ARCHIVES

EVARO, MONT.  
 FLATHEAD INDIAN RESERVATION  
 MISSOULA CO.