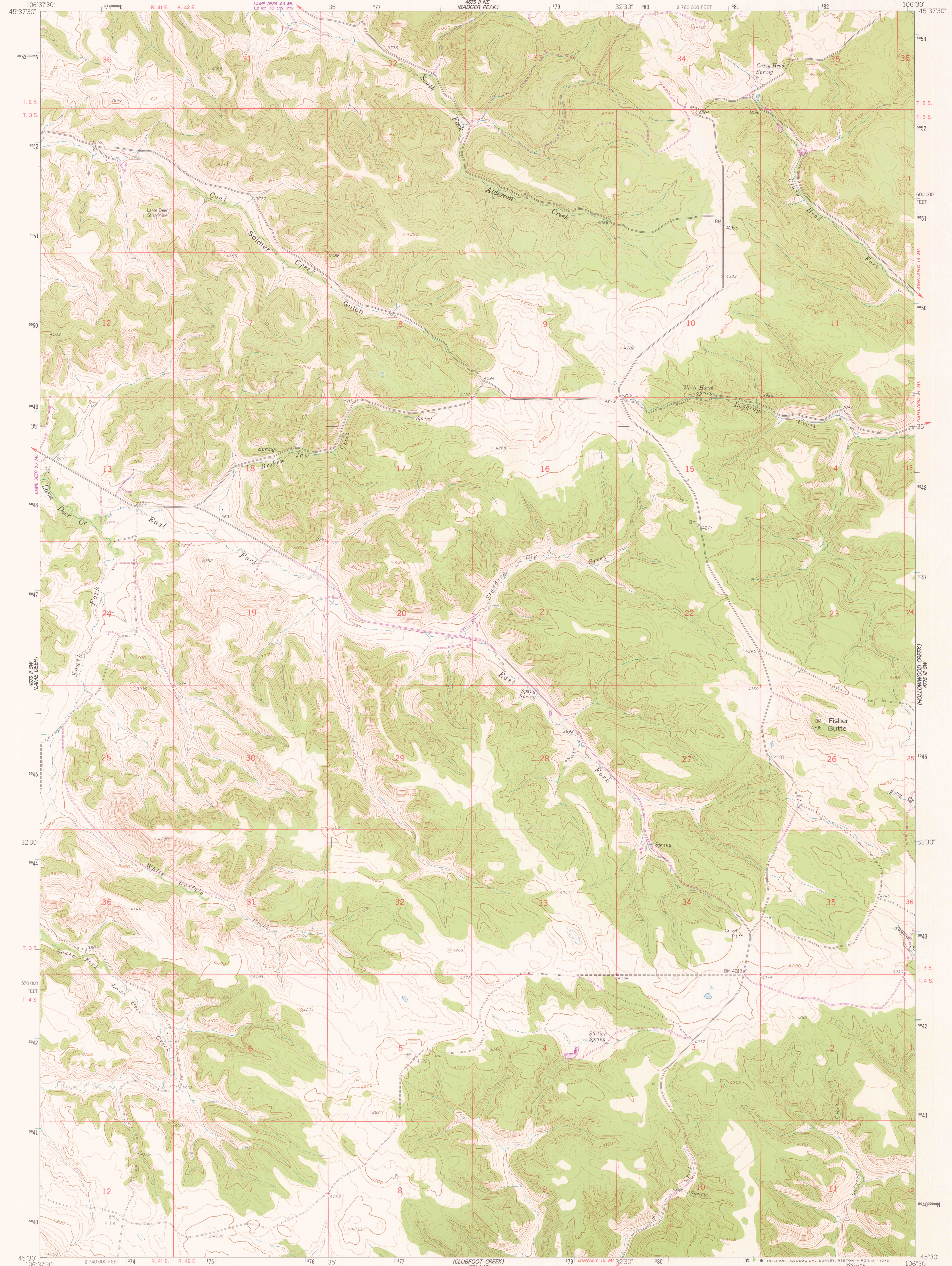


575 1/2 W
106°37'30"

UNITED STATES
DEPARTMENT OF THE INTERIOR
GEOLOGICAL SURVEY

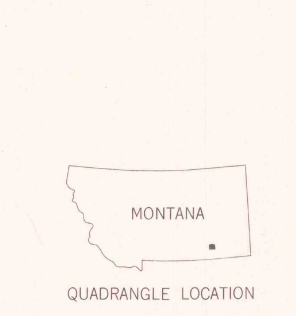
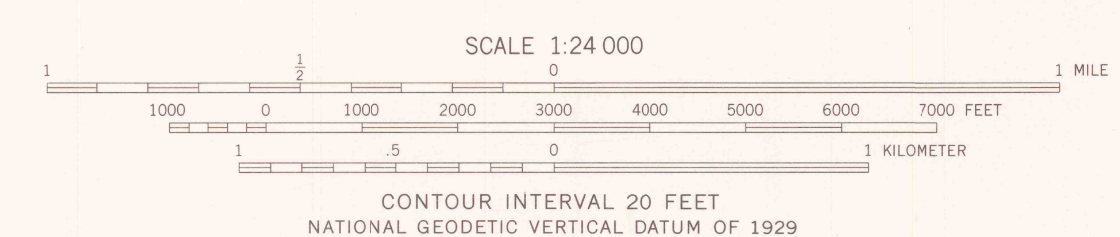
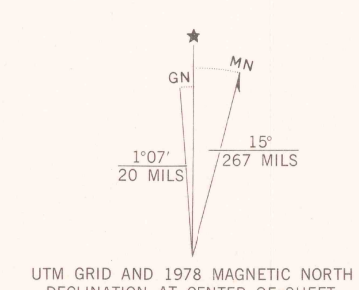
FISHER BUTTE QUADRANGLE
MONTANA-ROSEBUD CO.
7.5 MINUTE SERIES (TOPOGRAPHIC)

575 1/2 W
(BADGER PEAK)



575 1/2 W
(ROCK CREEK BUTTE)

Mapped, edited, and published by the Geological Survey as part of the Department of the Interior program for the development of the Missouri River Basin Control by USGS and NOS/NOAA
Topography from aerial photographs by photogrammetric methods
Aerial photographs taken 1956. Field check 1958
Polyconic projection. 1927 North American datum
10,000-foot grid based on Montana coordinate system, south zone
1000-meter Universal Transverse Mercator grid ticks, zone 13, shown in blue
Unchecked elevations are shown in brown
Entire area lies within the boundary of the Northern Cheyenne Indian Reservation



ROAD CLASSIFICATION
Light-duty ——— Unimproved dirt - - - - -

FISHER BUTTE, MONT.
N4530-W10630/7.5
1958
PHOTOREVISED 1978
AMS 4675 II SE-SERIES V894

THIS MAP COMPLIES WITH NATIONAL MAP ACCURACY STANDARDS
FOR SALE BY U. S. GEOLOGICAL SURVEY, DENVER, COLORADO 80225 OR RESTON, VIRGINIA 22092
A FOLDER DESCRIBING TOPOGRAPHIC MAPS AND SYMBOLS IS AVAILABLE ON REQUEST

U. S. GEOLOGICAL SURVEY
JAN 29 1979
LIBRARY