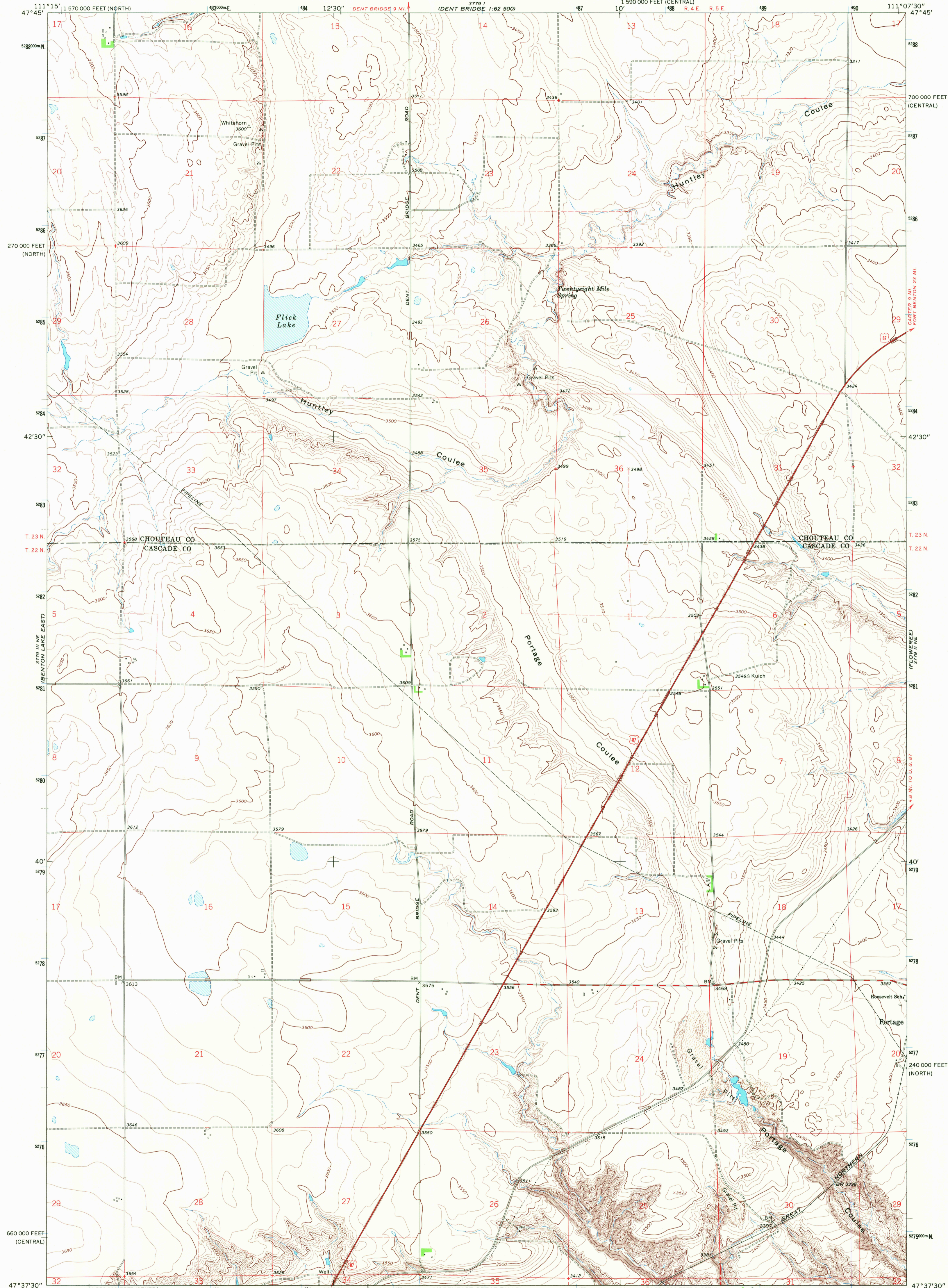
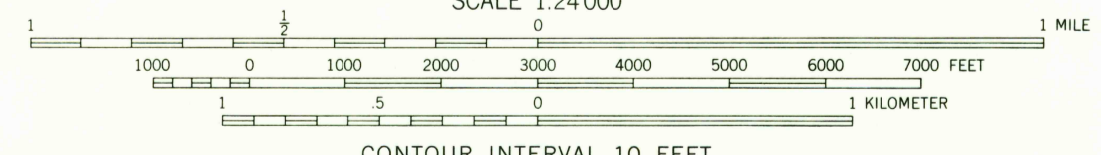
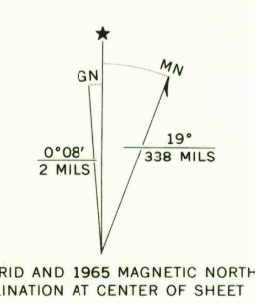


UNITED STATES
DEPARTMENT OF THE INTERIOR
GEOLOGICAL SURVEY

FLICK LAKE QUADRANGLE
MONTANA
7.5 MINUTE SERIES (TOPOGRAPHIC)
NW/4 PORTAGE 15' QUADRANGLE



Mapped, edited, and published by the Geological Survey
Control by USGS and USC&GS
Topography by photogrammetric methods from aerial
photographs taken 1964. Field checked 1965
Polyconic projection. 1927 North American datum
10,000-foot grids based on Montana coordinate system,
central and north zones
1000-meter Universal Transverse Mercator grid ticks,
zone 12, shown in blue
Fine red dashed lines indicate selected fence lines



ROAD CLASSIFICATION

Heavy-duty	Light-duty
Medium-duty	Unimproved dirt
U.S. Route	

U.S.G.S. FILE COPY TOPOGRAPHIC DIVISION
FLICK LAKE, MONT.
NW/4 PORTAGE 15' QUADRANGLE
N4737.5-W11107.5/7.5
1965
AMS 3779 II NW-SERIES V894

USGS Historical File Topographic Division

2755
JUN 25 1968

THIS MAP COMPLIES WITH NATIONAL MAP ACCURACY STANDARDS
FOR SALE BY U.S. GEOLOGICAL SURVEY, DENVER, COLORADO 80225, OR WASHINGTON, D.C. 20242
A FOLDER DESCRIBING TOPOGRAPHIC MAPS AND SYMBOLS IS AVAILABLE ON REQUEST