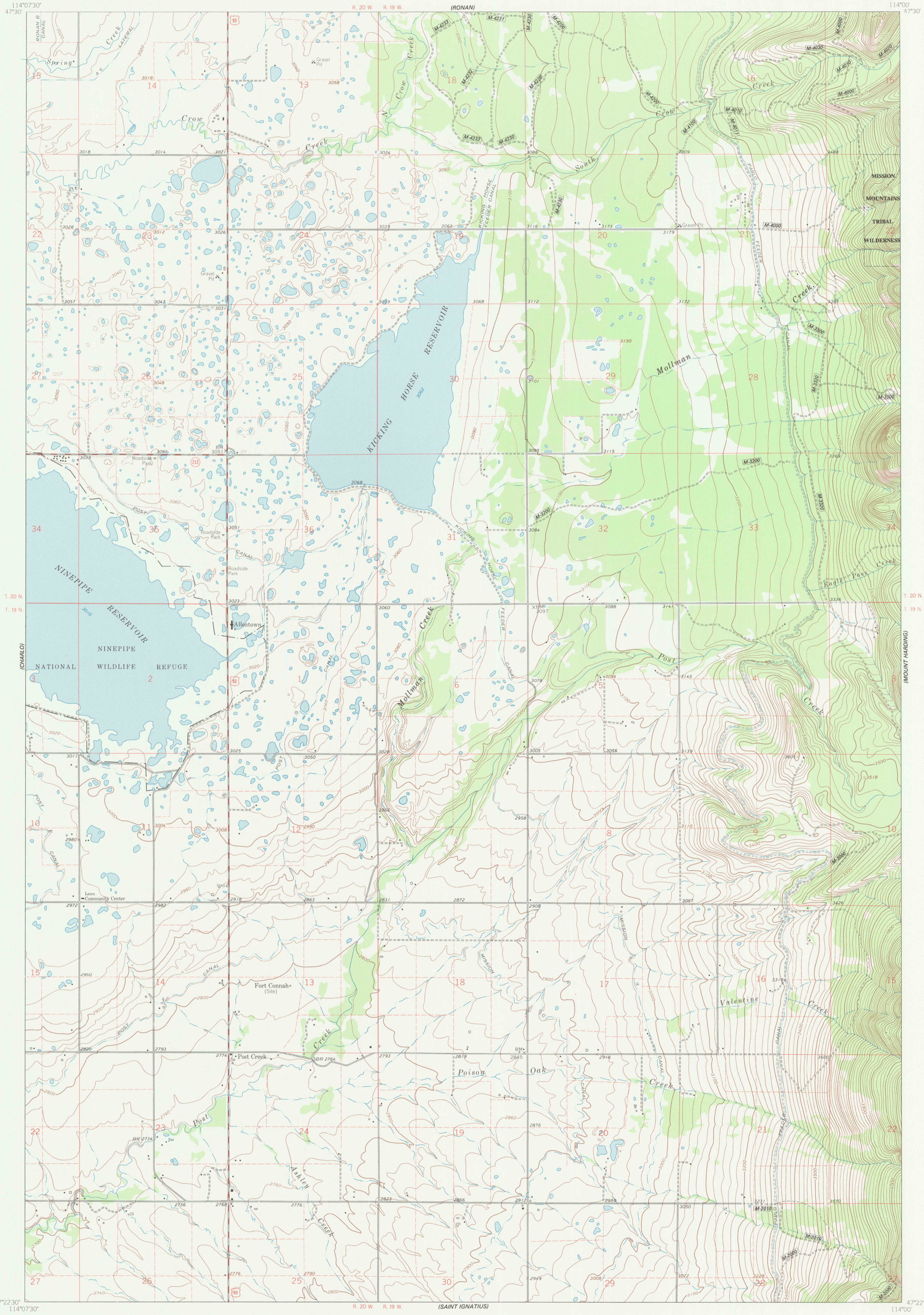
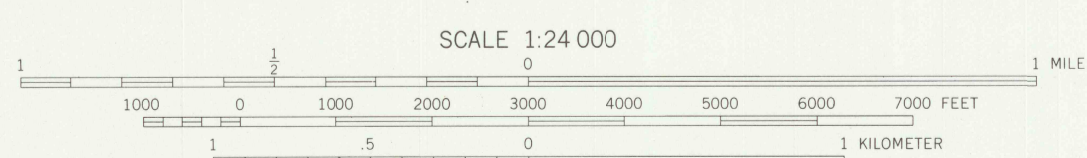


FORT CONNAH QUADRANGLE
FLATHEAD INDIAN RESERVATION
7.5 MINUTE SERIES (TOPOGRAPHIC)

UNITED STATES
DEPARTMENT OF THE INTERIOR
BUREAU OF INDIAN AFFAIRS



- ROADS**
- Paved road
 - Surfaced light duty or improved dirt road
 - Unimproved dirt road
 - Four wheel drive trail
 - Route designation shield
- RAILROADS**
- Single track
- LAND LINES**
- Surveyed
 - Protected
 - Fence lines
- BOUNDARIES**
- County
 - Reservation
 - Tribal Wilderness
 - Tribal Primitive Area
 - Power transmission line
 - CFI Pilot location
 - Aerial photo centers 1980 & 1981 flight
 - Indicated corner
 - Found corner

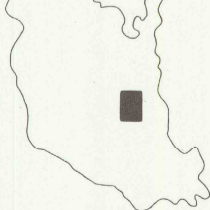


CONTOUR INTERVAL 20 FEET
DOTTED LINES REPRESENT 10FOOT CONTOURS
DATUM IS MEAN SEA LEVEL
NATIONAL GEODETIC VERTICAL DATUM OF 1929
CONTROL BY USGS AND NOS/NOAA

Prepared by the Geographical Survey for
the Bureau of Indian Affairs, Flathead Agency

Compiled in 1988 from USGS 1:24,000-scale quadrangle dated 1964
Revised from aerial photographs taken 1977 and other source data provided by BIA

1988 MAGNETIC NORTH
DECLINATION AT CENTER OF SHEET IS 18°



RETURN TO:
USGS M&D HISTORICAL MAP ARCHIVES

FORT CONNAH, MONT.
FLATHEAD INDIAN RESERVATION
LAKE CO.