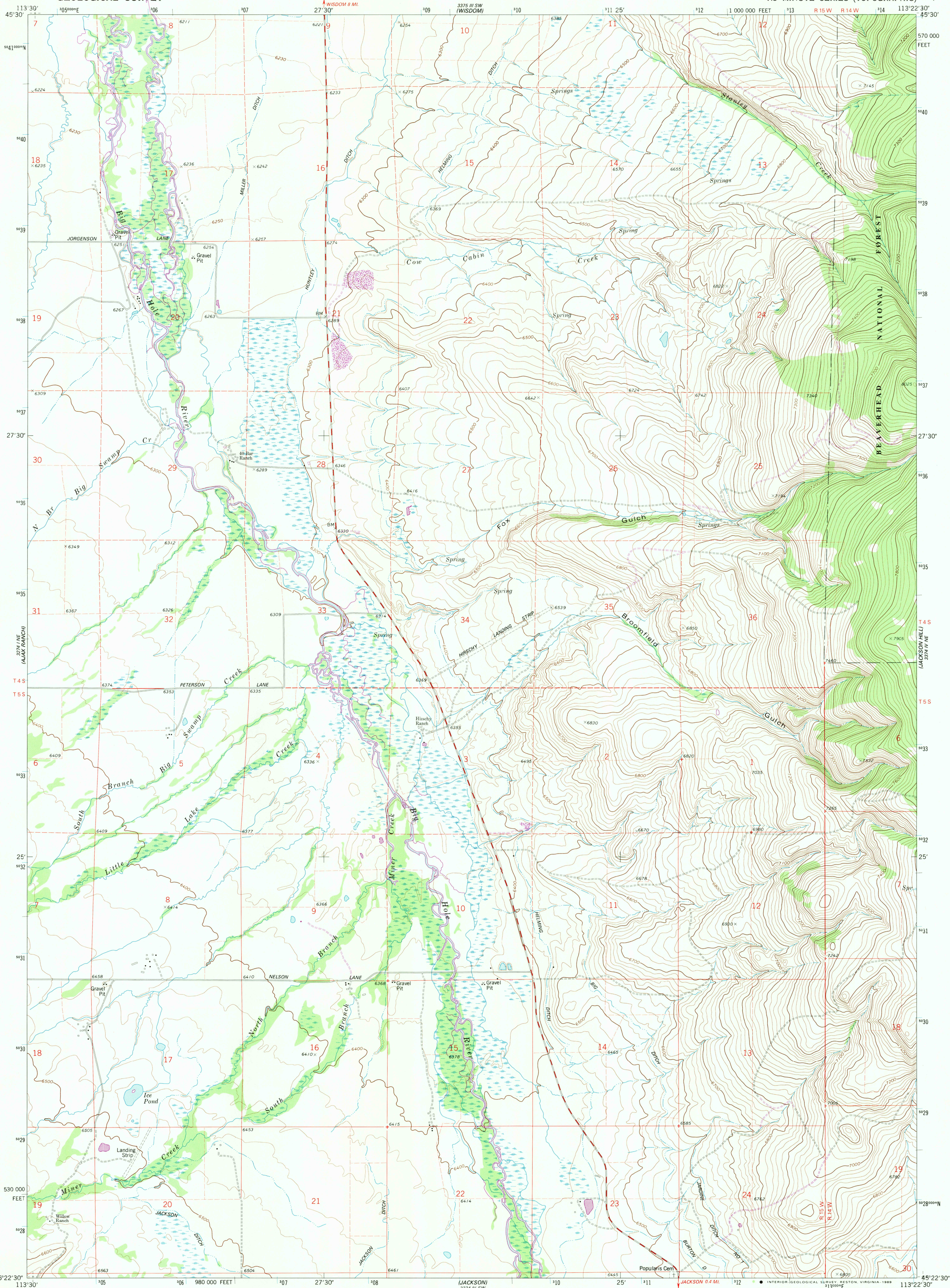


UNITED STATES
DEPARTMENT OF THE INTERIOR
GEOLOGICAL SURVEY

FOX GULCH QUADRANGLE
MONTANA—BEAVERHEAD CO
7.5 MINUTE SERIES (TOPOGRAPHIC)



Mapped, edited, and published by the Geological Survey

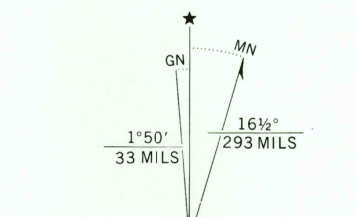
Control by USGS and NOS/NOAA

Topography by photogrammetric methods from aerial photographs taken 1967. Field checked 1974. Map edited 1978

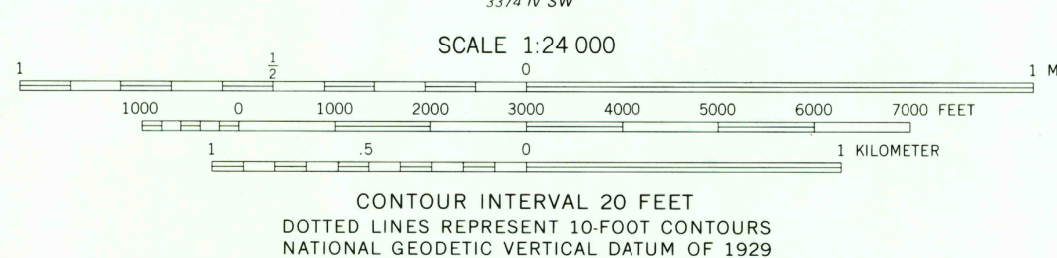
Projection and 10,000-foot grid ticks: Montana coordinate system, south zone (Lambert conformal conic) 1000-meter Universal Transverse Mercator grid ticks, zone 12, shown in blue. 1927 North American Datum

Fine red dashed lines indicate selected fence lines. Where omitted, land lines have not been established or are not shown because of insufficient data

To place on the predicted North American Datum 1983 move the projection lines 12 north and 69 meters east as shown by dashed corner ticks



UTM GRID AND 1988 MAGNETIC NORTH DECLINATION AT CENTER OF SHEET
There may be private inholdings within the boundaries of the National or State reservations shown on this map



THIS MAP COMPLIES WITH NATIONAL MAP ACCURACY STANDARDS
FOR SALE BY U.S. GEOLOGICAL SURVEY
DENVER, COLORADO 80225, OR RESTON, VIRGINIA 22092
A FOLDER DESCRIBING TOPOGRAPHIC MAPS AND SYMBOLS IS AVAILABLE ON REQUEST



Revisions shown in purple and woodland compiled from aerial photographs taken 1984 and other source data. Partial field check by U.S. Forest Service. Map edited 1988

ROAD CLASSIFICATION	
Primary highway, hard surface	Light-duty road, hard or improved surface
Secondary highway, hard surface	Unimproved road
Interstate Route	U.S. Route
	State Route

FOX GULCH, MONT.
45113-D4 TF-024

1978
PHOTOREVISED 1988
DMA 3374 IV NW—SERIES V894

