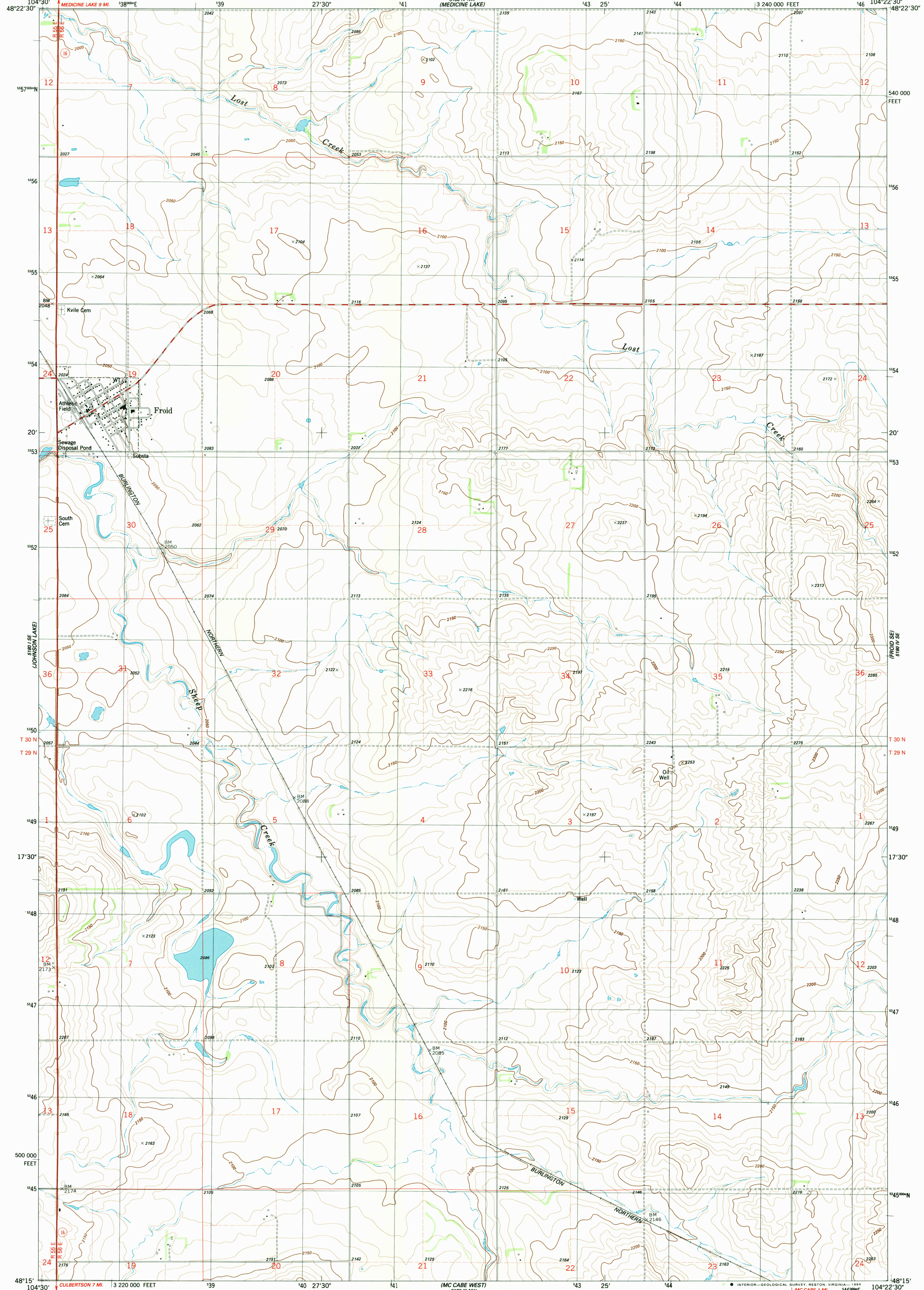


58° 10' N
104° 30' W
(MONTANA)

UNITED STATES
DEPARTMENT OF THE INTERIOR
GEOLOGICAL SURVEY

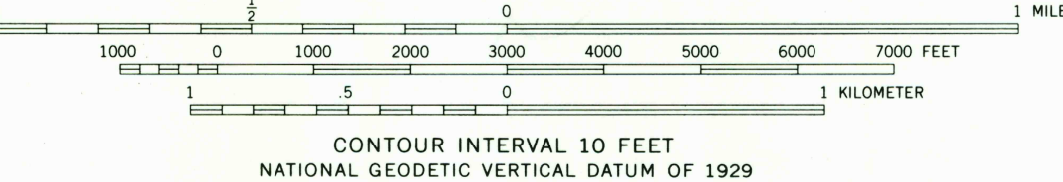
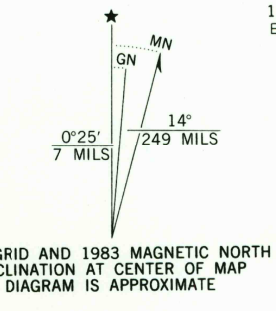
FROID QUADRANGLE
MONTANA—ROOSEVELT CO.
7.5 MINUTE SERIES (TOPOGRAPHIC)

58° 10' N
104° 30' W
(CAPRENE'S LAKE)



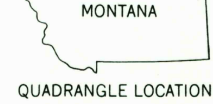
Mapped, edited, and published by the Geological Survey

Control by USGS and NOS/NOAA
Topography by photogrammetric methods from aerial photographs taken 1975. Field checked 1977. Map edited 1983
Projection and 10,000-foot grid ticks: Montana coordinate system, north zone (Lambert conformal conic) 1000-meter Universal Transverse Mercator grid, zone 13 1927 North American Datum
To place on the predicted North American Datum 1983 move the projection lines 2 meters north and 38 meters east as shown by dashed corner ticks
Fine red dashed lines indicate selected fence lines



ROAD CLASSIFICATION

Primary highway, hard surface	Light-duty road, hard or improved surface
Secondary highway, hard surface	Unimproved road
Interstate Route	U. S. Route
	State Route



FROID, MONT.
N4815-W10422.5/7.5

THIS MAP COMPLIES WITH NATIONAL MAP ACCURACY STANDARDS
FOR SALE BY U. S. GEOLOGICAL SURVEY, DENVER, COLORADO 80225, OR RESTON, VIRGINIA 22092
A FOLDER DESCRIBING TOPOGRAPHIC MAPS AND SYMBOLS IS AVAILABLE ON REQUEST

1983
DMA 5180 IV SW-SERIES V894

RETURN TO:
USGS AND HISTORICAL MAP ARCHIVES