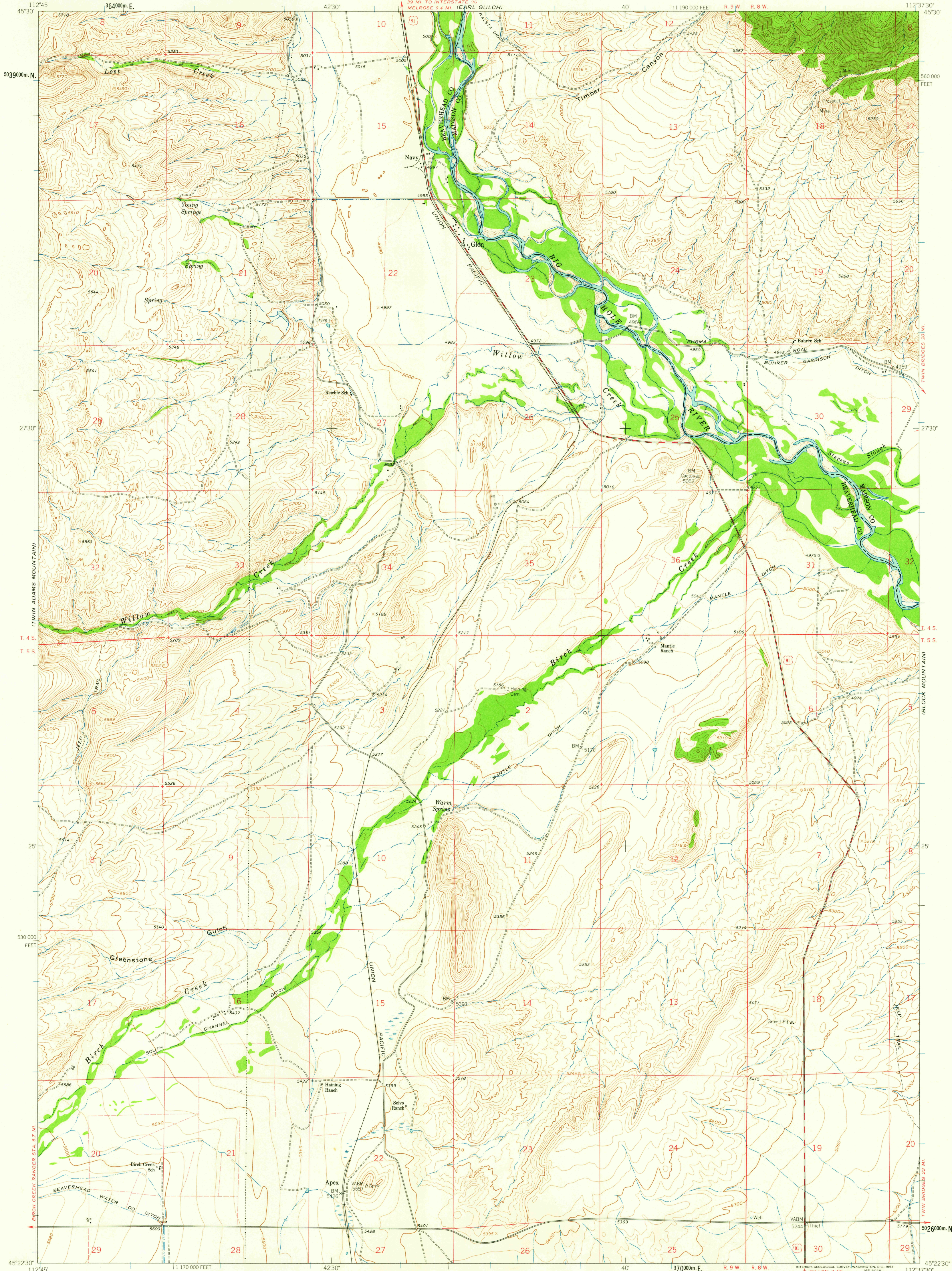


UNITED STATES
DEPARTMENT OF THE INTERIOR
GEOLOGICAL SURVEY

GLEN QUADRANGLE
MONTANA
7.5 MINUTE SERIES (TOPOGRAPHIC)



Mapped, edited, and published by the Geological Survey as part of the Department of the Interior program for the development of the Missouri River Basin.

Control by USGS and USC&GS.

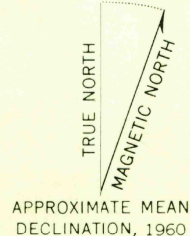
Topography by photogrammetric methods from aerial photographs taken 1959. Field checked 1960.

Polyconic projection. 1927 North American datum.

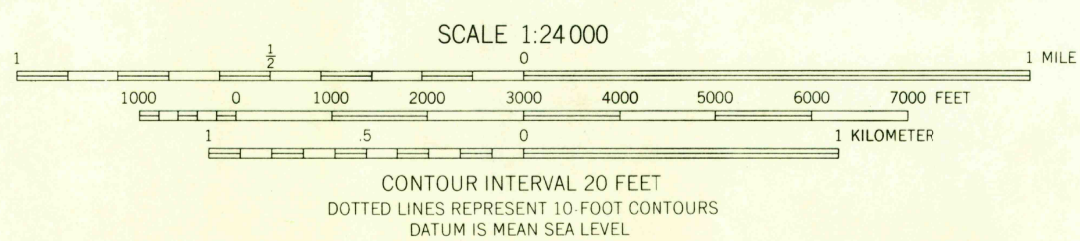
10,000-foot grid based on Montana coordinate system, south zone.

1000-meter Universal Transverse Mercator grid ticks, zone 12, shown in blue.

Fine red dashed lines indicate selected fence and field lines where generally visible on aerial photographs. This information is un-checked.



APPROXIMATE MEAN
DECLINATION, 1960



THIS MAP COMPLIES WITH NATIONAL MAP ACCURACY STANDARDS
FOR SALE BY U.S. GEOLOGICAL SURVEY, DENVER 25, COLORADO OR WASHINGTON 25, D.C.
A FOLDER DESCRIBING TOPOGRAPHIC MAPS AND SYMBOLS IS AVAILABLE ON REQUEST



ROAD CLASSIFICATION

Medium duty ——— Light duty ———

Unimproved dirt ———

U.S. Route

USGS
Historical File
Topographic Division

GLEN, MONT.
N4522 5 - W11237 5/7.5
1960

U.S.G.S.
FILE COPY
TOPOGRAPHIC DIVISION

MAP 2-5-1963