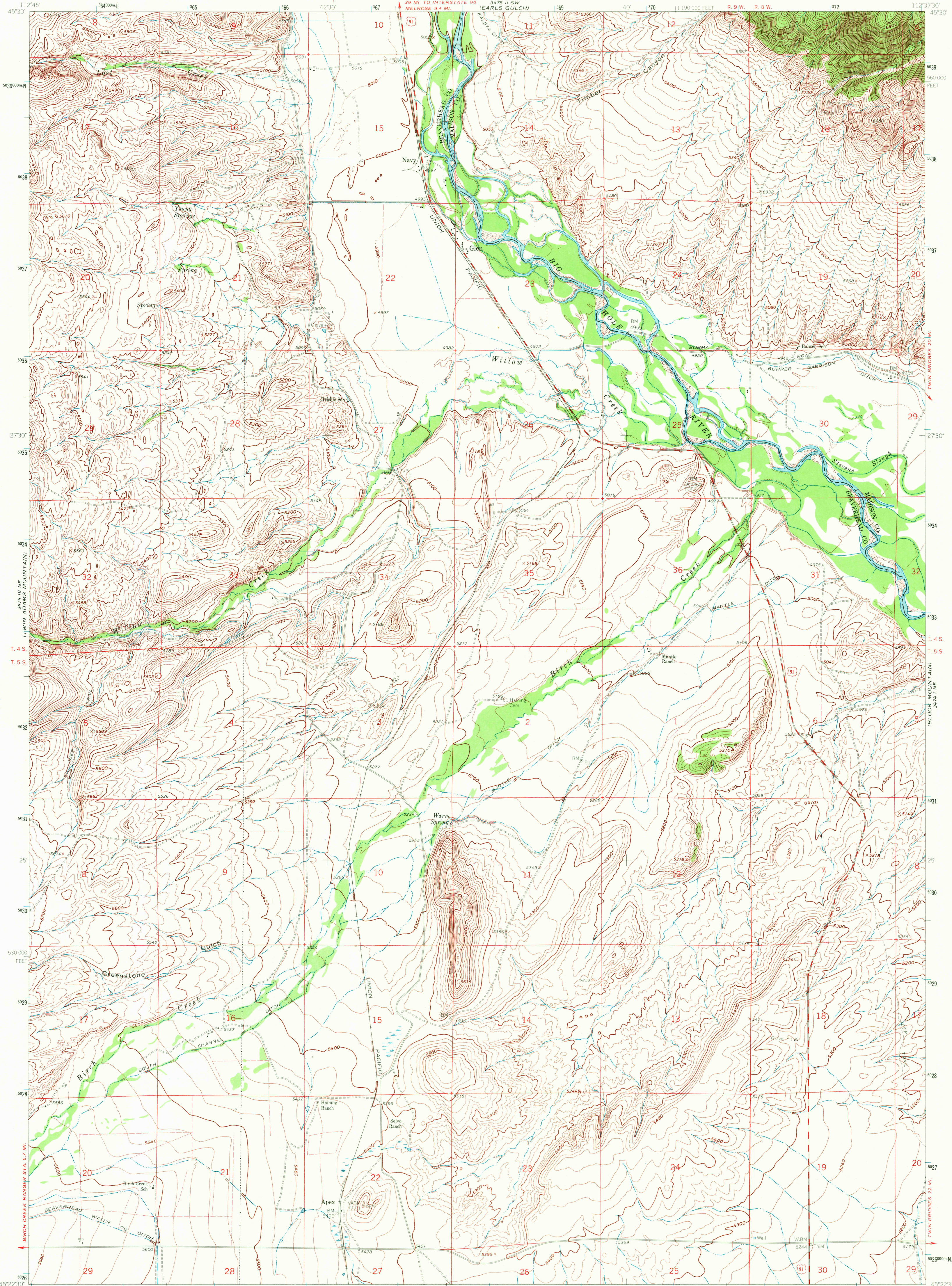


UNITED STATES  
DEPARTMENT OF THE INTERIOR  
GEOLOGICAL SURVEY

GLEN QUADRANGLE  
MONTANA  
7.5 MINUTE SERIES (TOPOGRAPHIC)



Mapped, edited, and published by the Geological Survey as part of the Department of the Interior program for the development of the Missouri River Basin.

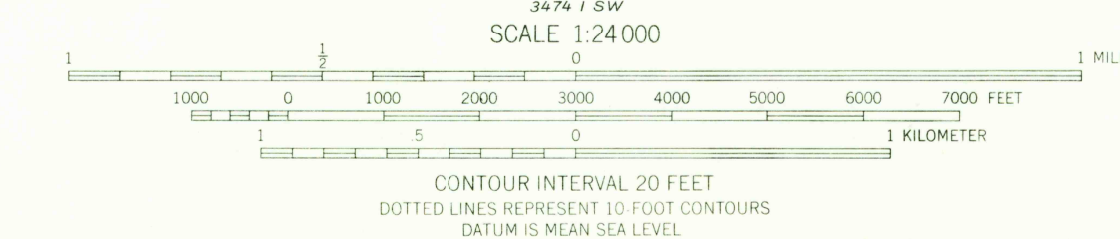
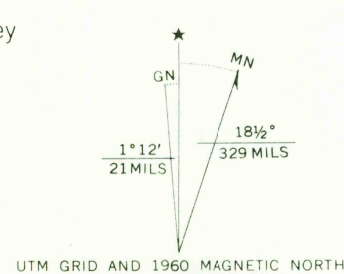
Control by USGS and USC&GS

Topography by photogrammetric methods from aerial photographs taken 1959. Field checked 1960.

Polycyclic projection. 1927 North American datum 10,000-foot grid based on Montana coordinate system, south zone

1000-meter Universal Transverse Mercator grid ticks, zone 12, shown in blue

Fine red dashed lines indicate selected fence and field lines where generally visible on aerial photographs. This information is unchecked



ROAD CLASSIFICATION

Medium duty ——— Light-duty ———

Unimproved dirt =====

U.S. Route

USGS  
HISTORICAL FILE  
TOPOGRAPHIC DIVISION

GLEN, MONT.  
N4522 5 W1237 5/7.5  
1960

AMS 3474 1 NW—SERIES V894

JUL 7 1972

2600