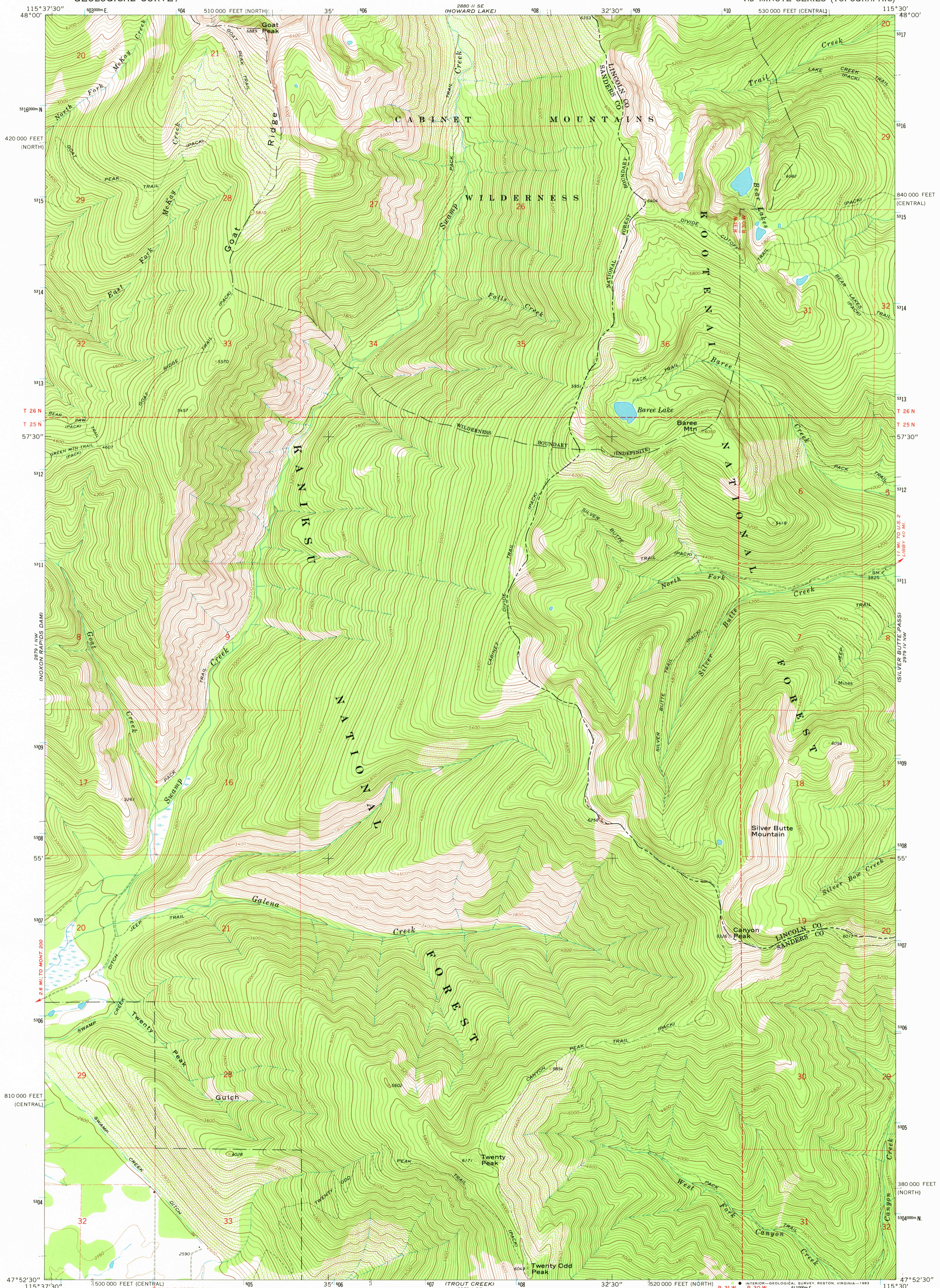


UNITED STATES
DEPARTMENT OF THE INTERIOR
GEOLOGICAL SURVEY

GOAT PEAK QUADRANGLE
MONTANA
7.5 MINUTE SERIES (TOPOGRAPHIC)



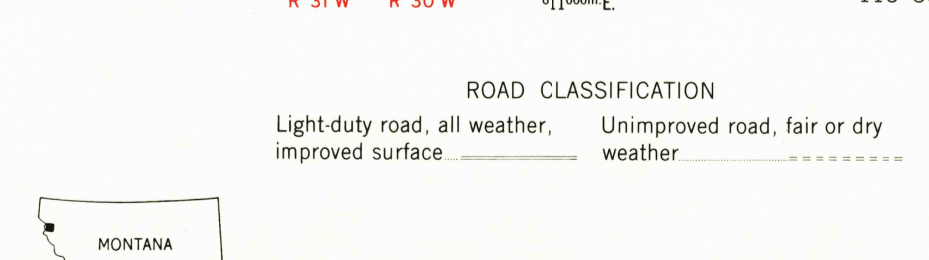
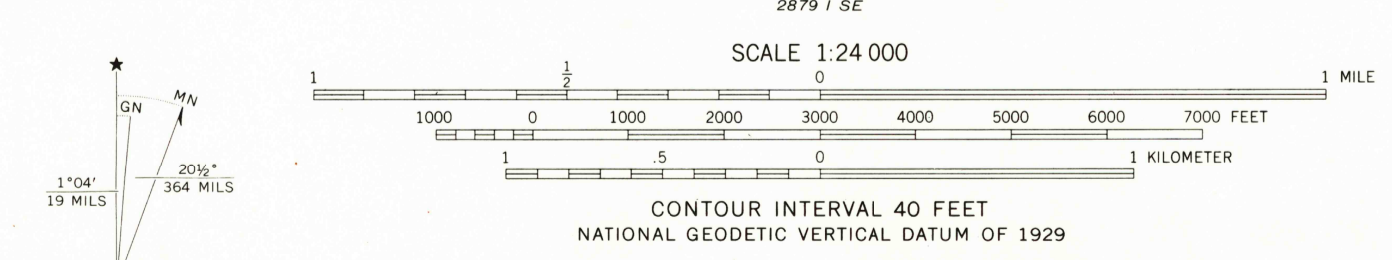
ELEPHANT PEAK
2890' 111° 34' W

2890' 111° 34' W
(BAREY PEAK)

LATCHWOOD
2893' 93° W

SEVEN POINT MOUNTAIN
2897' 109° W

Mapped, edited, and published by the Geological Survey
Control by USGS and USC&GS
Topography by photogrammetric methods from aerial
photographs taken 1965. Field checked 1966
Polyconic projection. 1927 North American datum
10,000-foot grids based on Montana coordinate system,
central and north zones
1000-meter Universal Transverse Mercator grid ticks,
zone 11, shown in blue
Fine red dashed lines indicate selected fence lines
Where omitted, land lines have not been established
To place on the predicted North American Datum 1983
move the projection lines 13 meters north and
74 meters east as shown by dashed corner ticks



THIS MAP COMPLIES WITH NATIONAL MAP ACCURACY STANDARDS
FOR SALE BY U. S. GEOLOGICAL SURVEY, DENVER, COLORADO 80225, OR RESTON, VIRGINIA 22092
A FOLDER DESCRIBING TOPOGRAPHIC MAPS AND SYMBOLS IS AVAILABLE ON REQUEST

GOAT PEAK, MONT.
N4752.5—W11530/7.5
1966
DMA 2879 I NE-SERIES V884

NOV 1966
RETURN TO:
USGS AND HISTORICAL MAP ARCHIVES