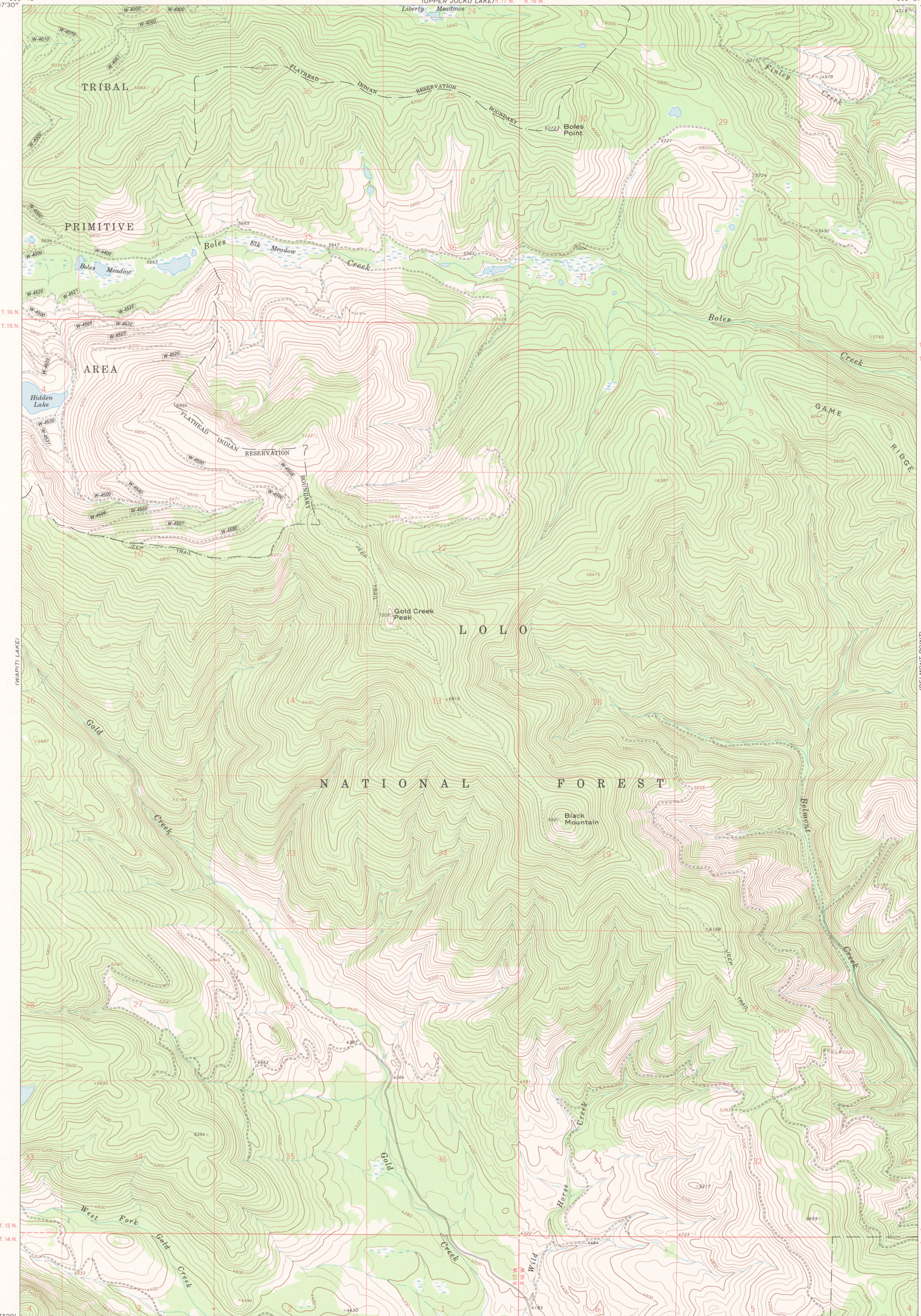


GOLD CREEK PEAK QUADRANGLE
FLATHEAD INDIAN RESERVATION
7.5 MINUTE SERIES (TOPOGRAPHIC)

UNITED STATES
DEPARTMENT OF THE INTERIOR
BUREAU OF INDIAN AFFAIRS

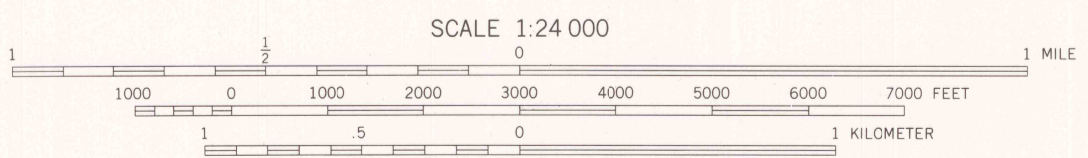
113°45'
47°07'30"

113°37'30"
47°07'30"



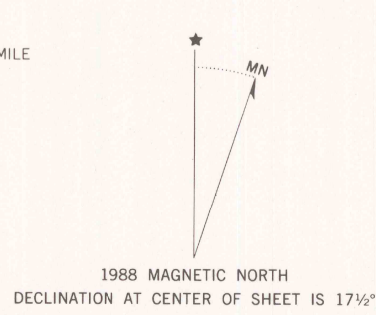
47°00' 113°45' (SUNFLOWER MOUNTAIN) 47°00' 113°37'30" (BELMONT POINT)

ROADS		BOUNDARIES	
Paved road	County	Reservation	Indian
Surface light duty or improved dirt road	Unimproved dirt road	Tribal Wilderness	Tribal Primitive Area
Four wheel drive trail	Route designation shield	Power transmission line	CFI Plot location
RAILROADS	Single track	Aerial photo centers 1980 & 1981 flight	CFI Plot location
LAND LINES	Surveyed	Indicated corner	Found corner
Retracted	Fence lines		



CONTOUR INTERVAL 40 FEET
DATUM IS MEAN SEA LEVEL
NATIONAL GEODETIC VERTICAL DATUM OF 1929
CONTROL BY USGS AND NOS/NOAA

Prepared by the Geological Survey for
the Bureau of Indian Affairs, Flathead Agency
Compiled in 1988 from USGS 1:24,000-scale quadrangle dated 1965
Revised from aerial photographs taken 1977 and other source data provided by BIA



RETURN TO:
USGS M&D HISTORICAL MAP ARCHIVES

GOLD CREEK PEAK, MONT.
FLATHEAD INDIAN RESERVATION
MISSOULA CO.