

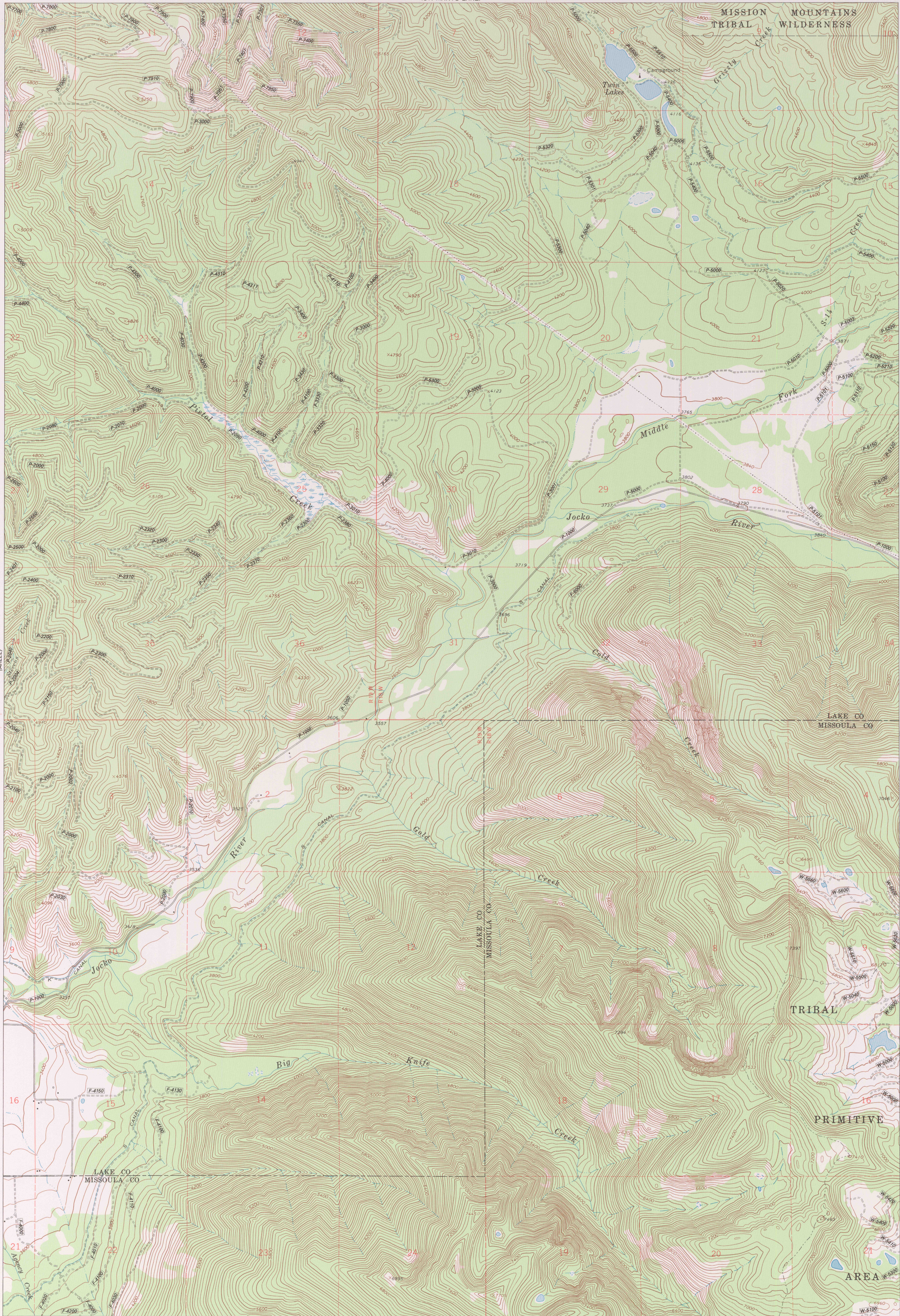
GOLD CREEK QUADRANGLE
FLATHEAD INDIAN RESERVATION
7.5 MINUTE SERIES (TOPOGRAPHIC)

UNITED STATES
DEPARTMENT OF THE INTERIOR
BUREAU OF INDIAN AFFAIRS

114°00'
47°15'

R. 19 W. R. 18 W. (ST. MARYS LAKE)

113°52'30"
47°15'

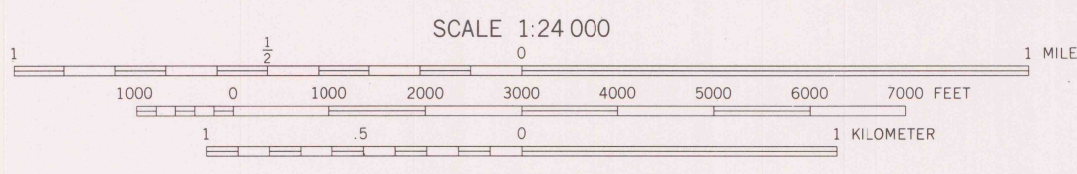


47°07'30"
114°00'

R. 19 W. (STUART PEAK) R. 18 W.

47°07'30"
113°52'30"

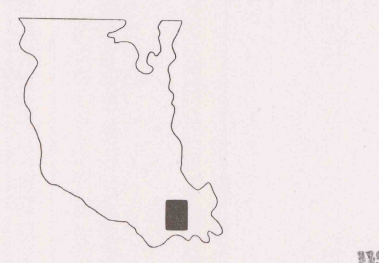
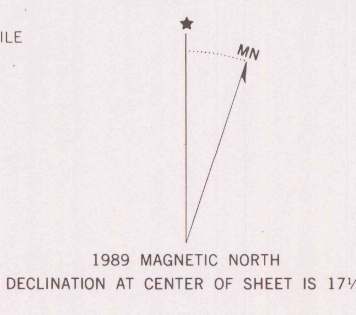
ROADS		BOUNDARIES	
Paved road	—	County	—
Surfaced light duty or improved dirt road	—	Reservation	—
Unsurfaced dirt road	—	Tribal Wilderness	—
Four wheel drive trail	—	Tribal Primitive Area	—
Route designation shield	—	Power transmission line	—
RAILROADS		CFI Plot location	○
Single track	—	Aerial photo centers 1980 & 1981 flight	+
LAND LINES		Indicated corner	⊕
Surveyed	—	Found corner	+
Protected	—		
Fence lines	—		



CONTOUR INTERVAL 40 FEET
DATUM IS MEAN SEA LEVEL
NATIONAL GEODETIC VERTICAL DATUM OF 1929
CONTROL BY USGS AND NOS/NOAA

Prepared by the Geological Survey for
the Bureau of Indian Affairs, Flathead Agency

Compiled in 1989 from USGS 1:24,000-scale quadrangle dated 1965
Revised from aerial photographs taken 1977 and other source data provided by BIA



GOLD CREEK, MONT.
FLATHEAD INDIAN RESERVATION

RETURN TO:
USGS MID HISTORICAL MAP ARCHIVES