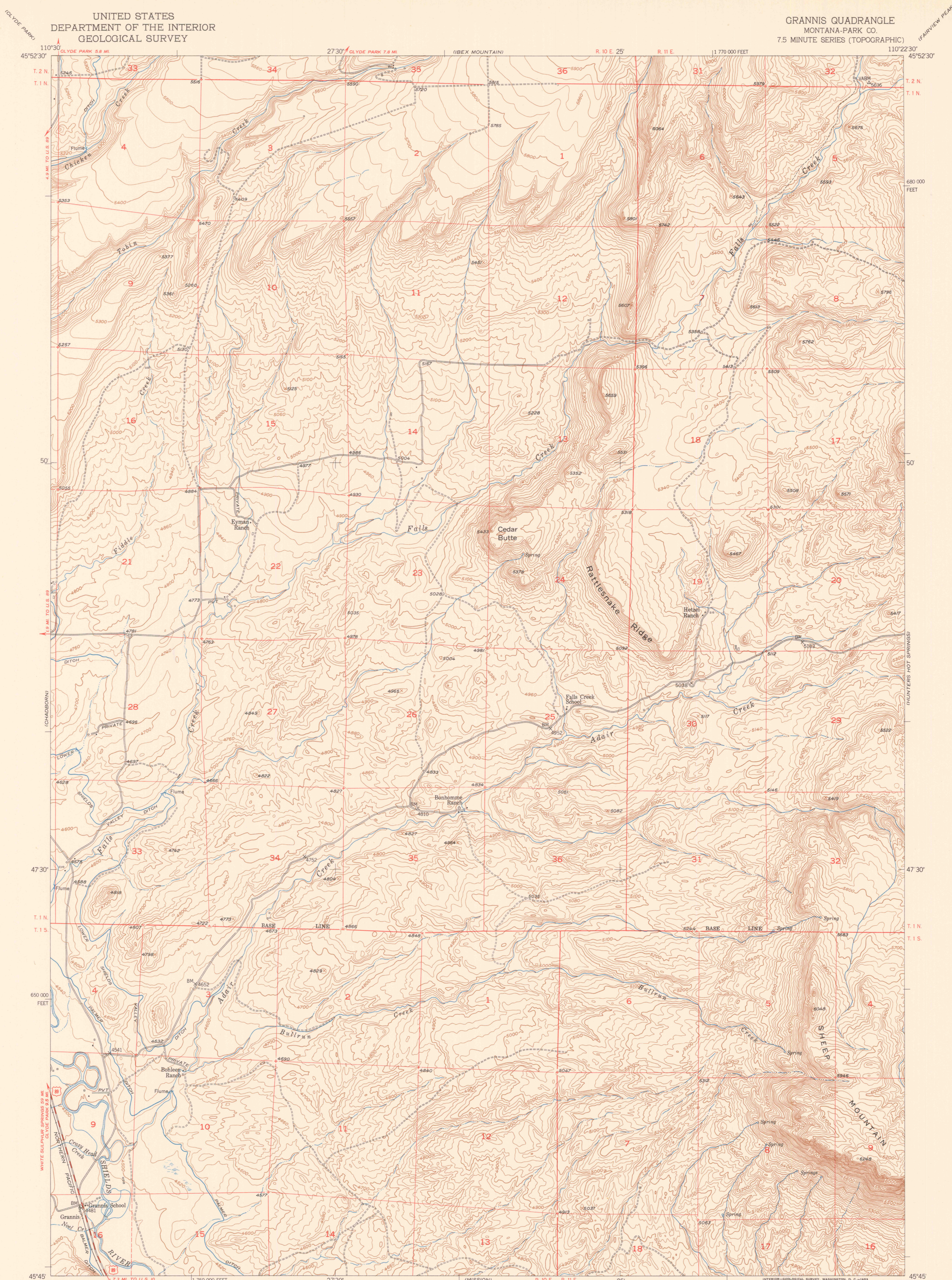
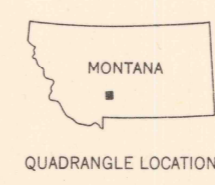
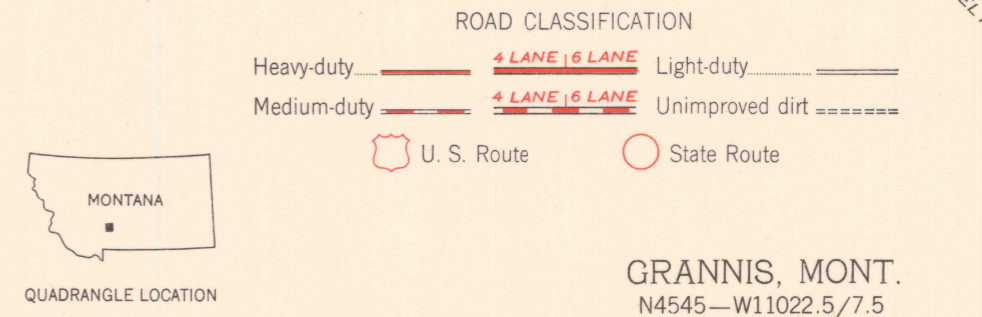
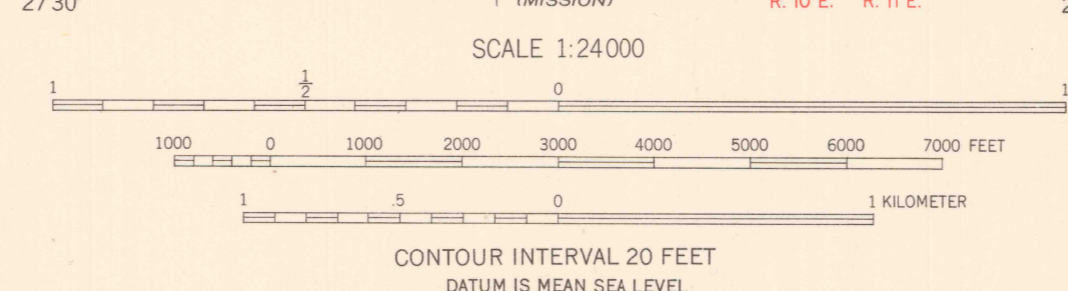
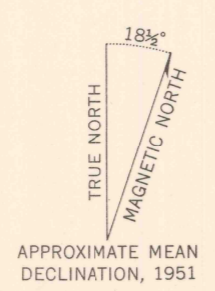


UNITED STATES
DEPARTMENT OF THE INTERIOR
GEOLOGICAL SURVEY

GRANNIS QUADRANGLE
MONTANA-PARK CO.
7.5 MINUTE SERIES (TOPOGRAPHIC)



Maped, edited, and published by the Geological Survey as part of the Department of the Interior program for the development of the Missouri River Basin Control by USGS and USC&GS
Topography from aerial photographs by multiplex methods by Ryall Engineering Co. Aerial photographs taken-1948 Field check 1951
Polyconic projection. 1927 North American datum 10,000-foot grid based on Montana coordinate system, south zone
Dashed land lines indicate approximate locations



GRANNIS, MONT.
N4545-W11022.5/7.5

1951

THIS MAP COMPLIES WITH NATIONAL MAP ACCURACY STANDARDS
FOR SALE BY U. S. GEOLOGICAL SURVEY, FEDERAL CENTER, DENVER, COLORADO OR WASHINGTON 25, D. C.
A FOLDER DESCRIBING TOPOGRAPHIC MAPS AND SYMBOLS IS AVAILABLE ON REQUEST

