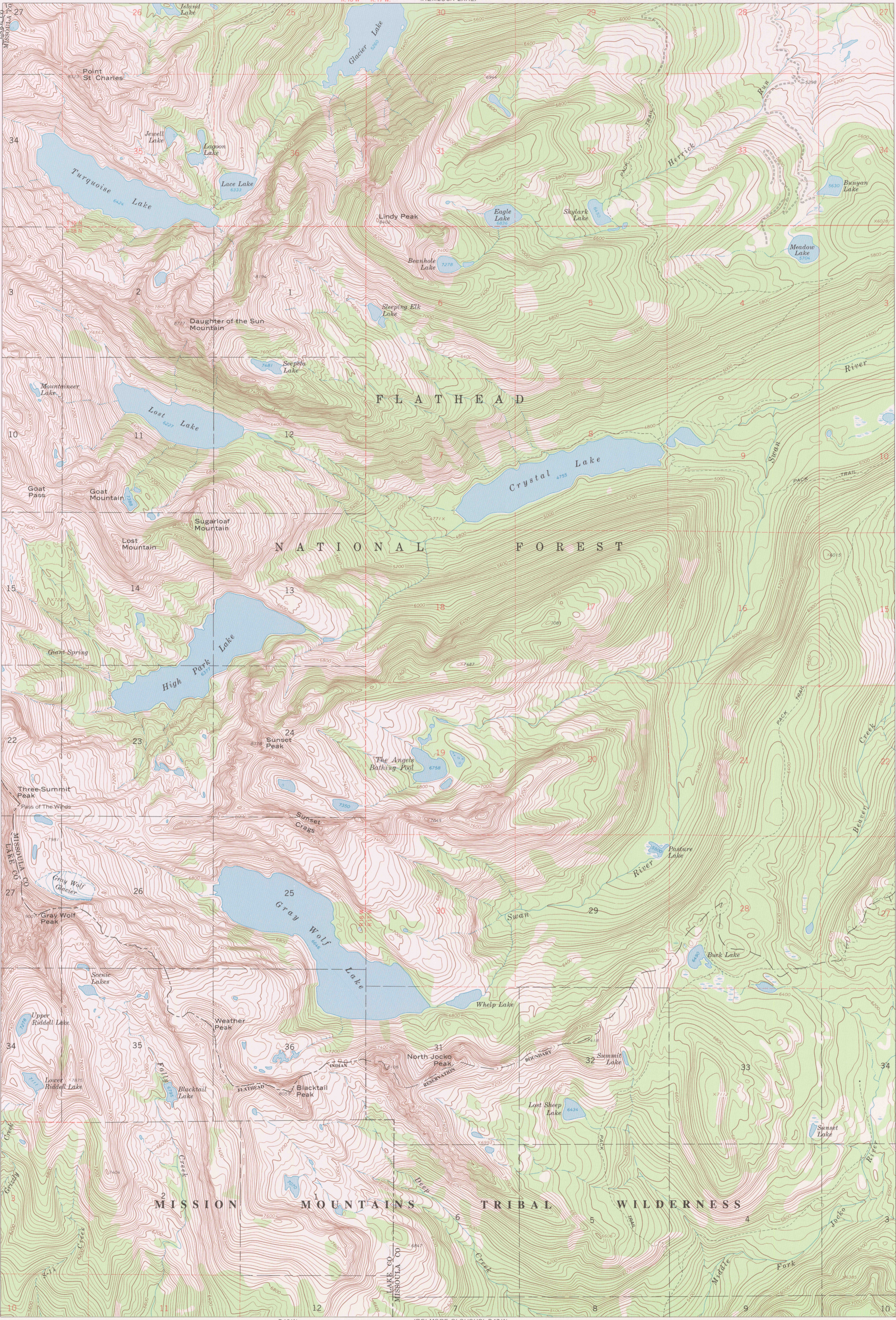


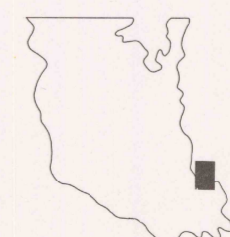
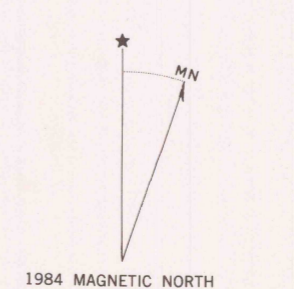
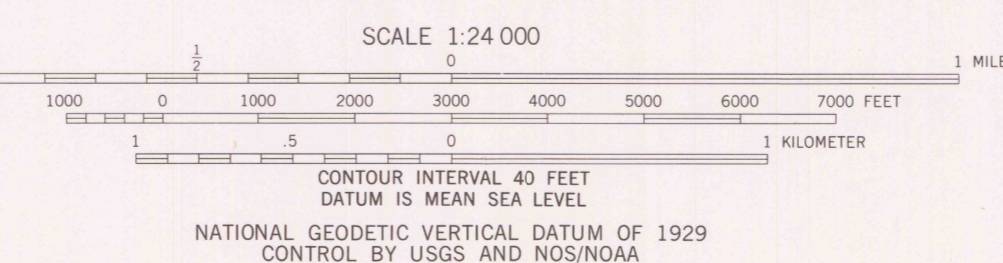
113°52'30"
47°22'30"

113°45'
47°22'30"



LEGEND

ROADS		BOUNDARIES	
Paved road	County	Reservation	Indian Landmark
Surface light duty or improved dirt road	Reservation	Tribal Wilderness	Tribal Primitive Area
Unimproved dirt road	Tribal Wilderness	Tribal Primitive Area	Power transmission line
Four wheel drive trail	Tribal Primitive Area	Power transmission line	CTI Pilot location
Route designation shield	Power transmission line	CTI Pilot location	Aerial photo centers 1980 & 1981 flight
RAILROADS	Aerial photo centers 1980 & 1981 flight	Indicated corner	Found corner
Single track	Indicated corner	Found corner	
LAND LINES	Found corner		
Surveyed			
Proprietary			
Fence lines			



RETURN TO:
USGS NHD HISTORICAL MAP ARCHIVES

Prepared by the Geological Survey for
the Bureau of Indian Affairs, Flathead Agency
Compiled in 1987 from USGS 1:24,000-scale quadrangle dated 1965
Revised from aerial photographs taken 1977 and other source data provided by BIA

GRAY WOLF LAKE, MONT.
FLATHEAD INDIAN RESERVATION

MOUNT HARDING
LAKE CO. MISSOULA CO.
ST. MARYS LAKE
GOLD CREEK

HEMLOCK LAKE
CYGNET LAKE
LAKE MARSHALL
UPPER JOCKO LAKE