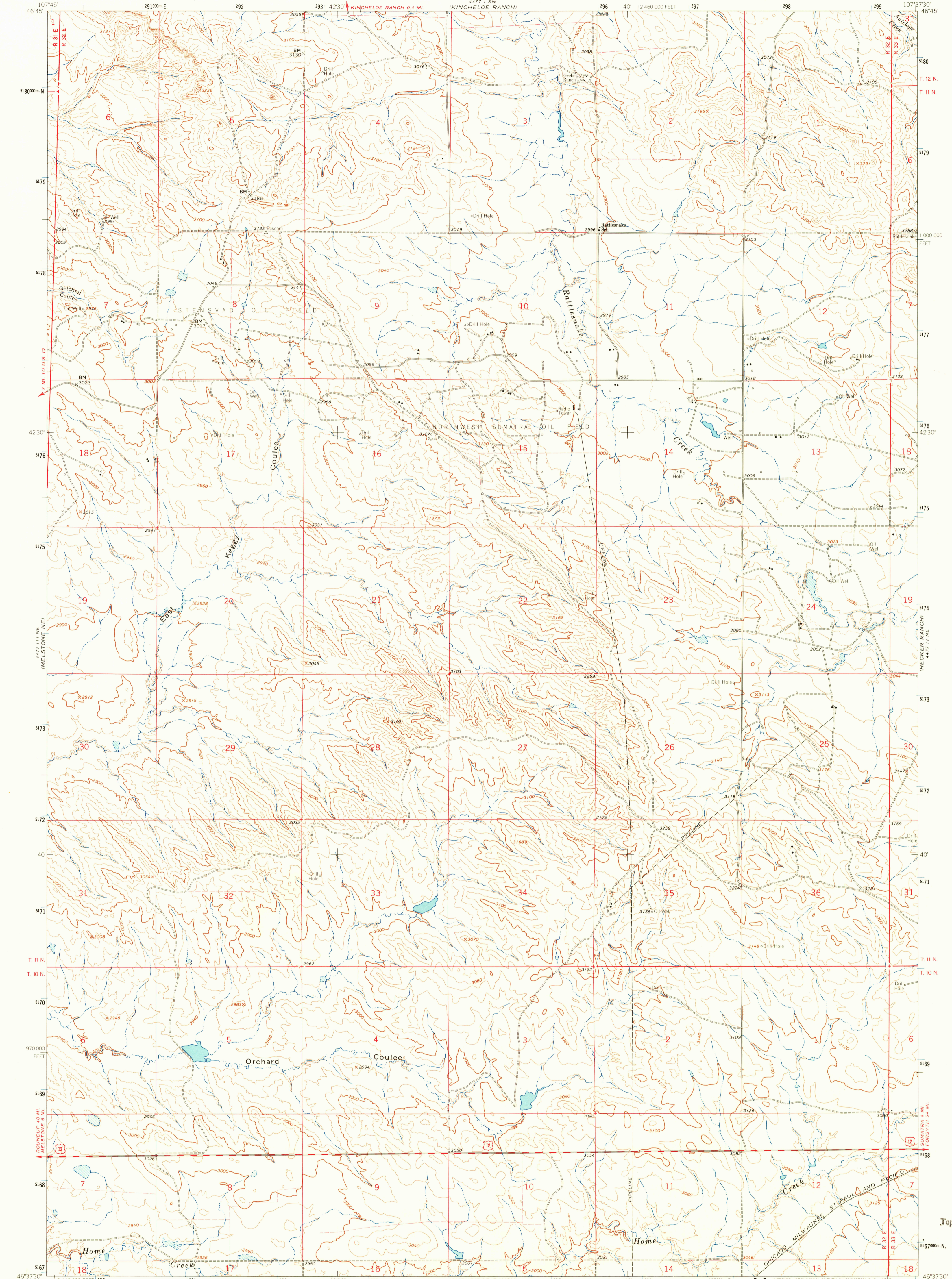
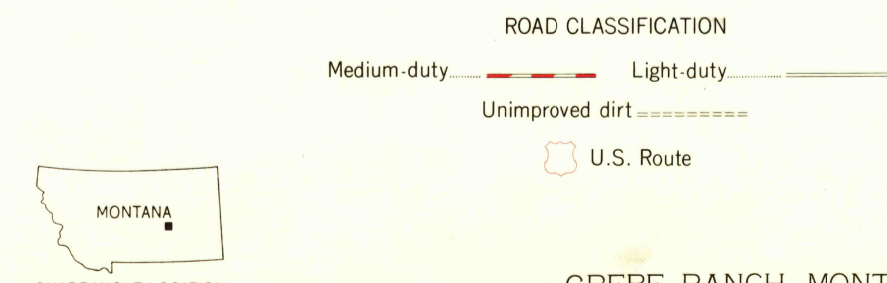
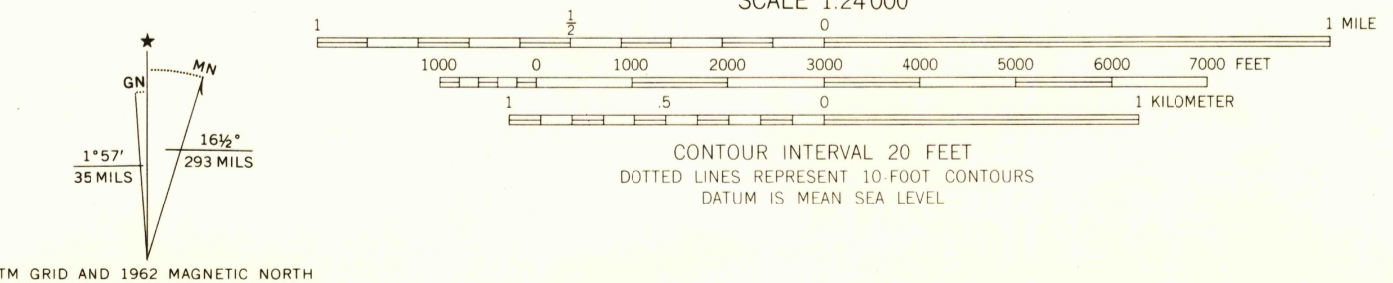


MELSTONE
4477 11 SE

MELSTONE
4477 11 SE
IREGAL COULEE



Mapped, edited, and published by the Geological Survey
Control by USGS and USC&GS
Topography by photogrammetric methods from aerial
photographs taken 1961. Field checked 1962
Polyconic projection. 1927 North American datum
10,000-foot grid based on Montana coordinate system, south zone
1000 meter Universal Transverse Mercator grid ticks,
zone 13, shown in blue
Fine red dashed lines indicate selected fence lines



THIS MAP COMPLIES WITH NATIONAL MAP ACCURACY STANDARDS
FOR SALE BY U.S. GEOLOGICAL SURVEY, DENVER 25, COLORADO OR WASHINGTON 25, D.C.
A FOLDER DESCRIBING TOPOGRAPHIC MAPS AND SYMBOLS IS AVAILABLE ON REQUEST

GREBE RANCH, MONT.
N4637 5 - W10737 5/7 5

1962

AMS 4477 11 NW - SERIES V894

USGS
Historical File
Topographic Division

MAR 2 2 1965

2560

U.S.G.S.
FILE COPY
TOPOGRAPHIC DIVISION