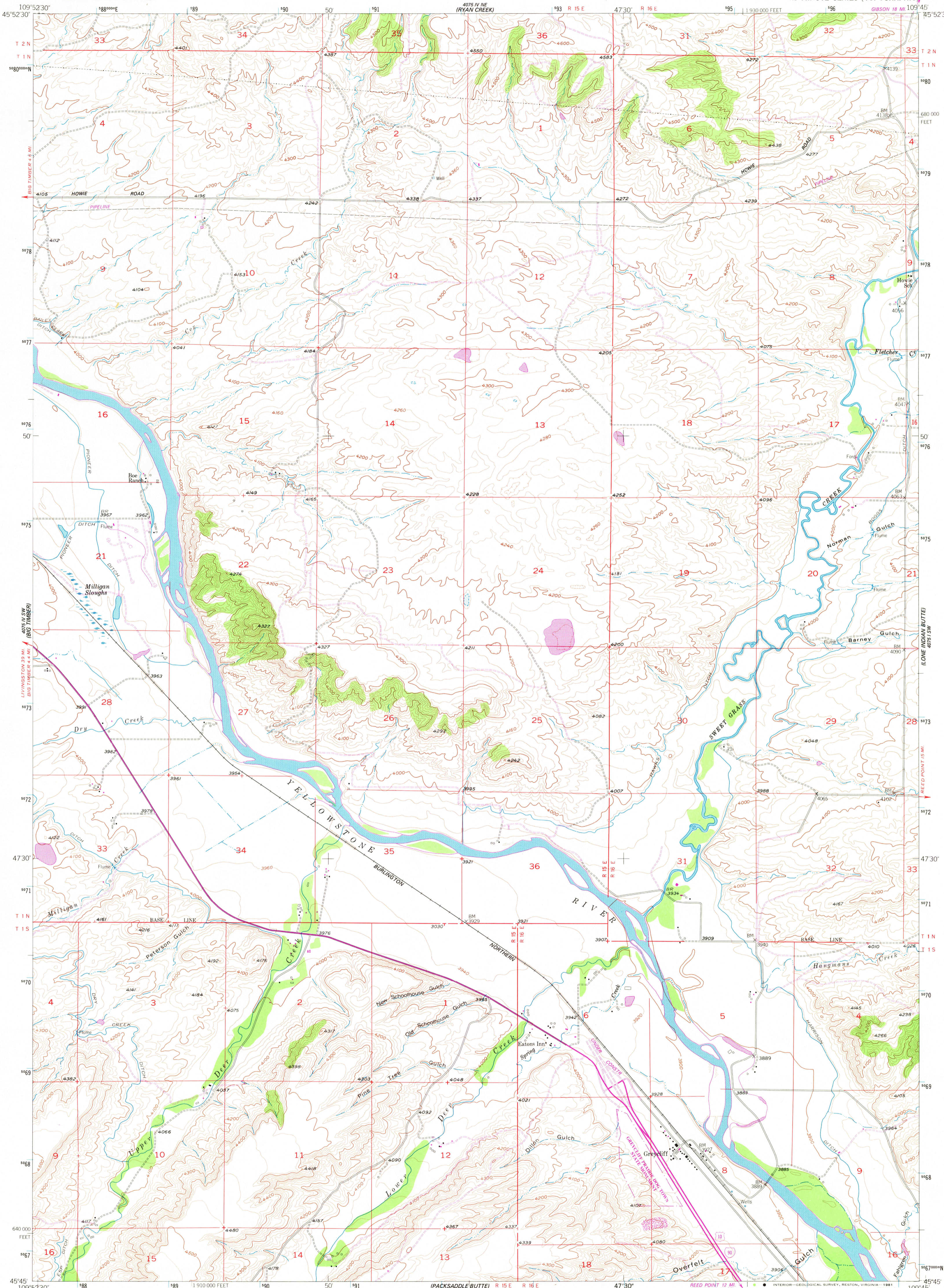


UNITED STATES  
DEPARTMENT OF THE INTERIOR  
GEOLOGICAL SURVEY

GREYCLIFF QUADRANGLE  
MONTANA-SWEET GRASS CO.  
7.5 MINUTE SERIES (TOPOGRAPHIC)



Mapped, edited, and published by the Geological Survey as part of the Department of the Interior program for the development of the Missouri River Basin

Control by USGS and NOS/NOAA

Topography from aerial photographs by multiplex methods and by planetable surveys 1955. Aerial photographs taken 1951

Polyconic projection. 1927 North American datum 10,000-foot grid based on Montana coordinate system, south zone

1000-meter Universal Transverse Mercator grid ticks, zone 12, shown in blue

Dashed land lines indicate approximate locations

To place on the predicted North American Datum 1983 move the projection lines 9 meters north and 55 meters east as shown by dashed corner ticks

There may be private inholdings within the boundaries of the National or State reservations shown on this map

THIS MAP COMPLIES WITH NATIONAL MAP ACCURACY STANDARDS FOR SALE BY U. S. GEOLOGICAL SURVEY, DENVER, COLORADO 80225, OR RESTON, VIRGINIA 22092 A FOLDER DESCRIBING TOPOGRAPHIC MAPS AND SYMBOLS IS AVAILABLE ON REQUEST

SCALE 1:24,000  
1 0 1000 2000 3000 4000 5000 6000 7000 FEET  
1 0 5 10 15 20 KILOMETER

CONTOUR INTERVAL 20 FEET  
NATIONAL GEODETIC VERTICAL DATUM OF 1929

ROAD CLASSIFICATION  
Heavy-duty ——— Light-duty ———  
Medium-duty ——— Unimproved dirt ———  
Interstate Route U.S. Route State Route



GREYCLIFF, MONT  
N4545-W10945/7.5

1955  
PHOTOREVISED 1980  
DMA 4075 IV SE-SERIES 9894

Revisions shown in purple compiled from aerial photographs taken 1977 and other source data. This information not field checked. Map edited 1980

RETURN TO:  
USGS M&D HISTORICAL MAP ARCHIVES

NOV 16 1981

2150