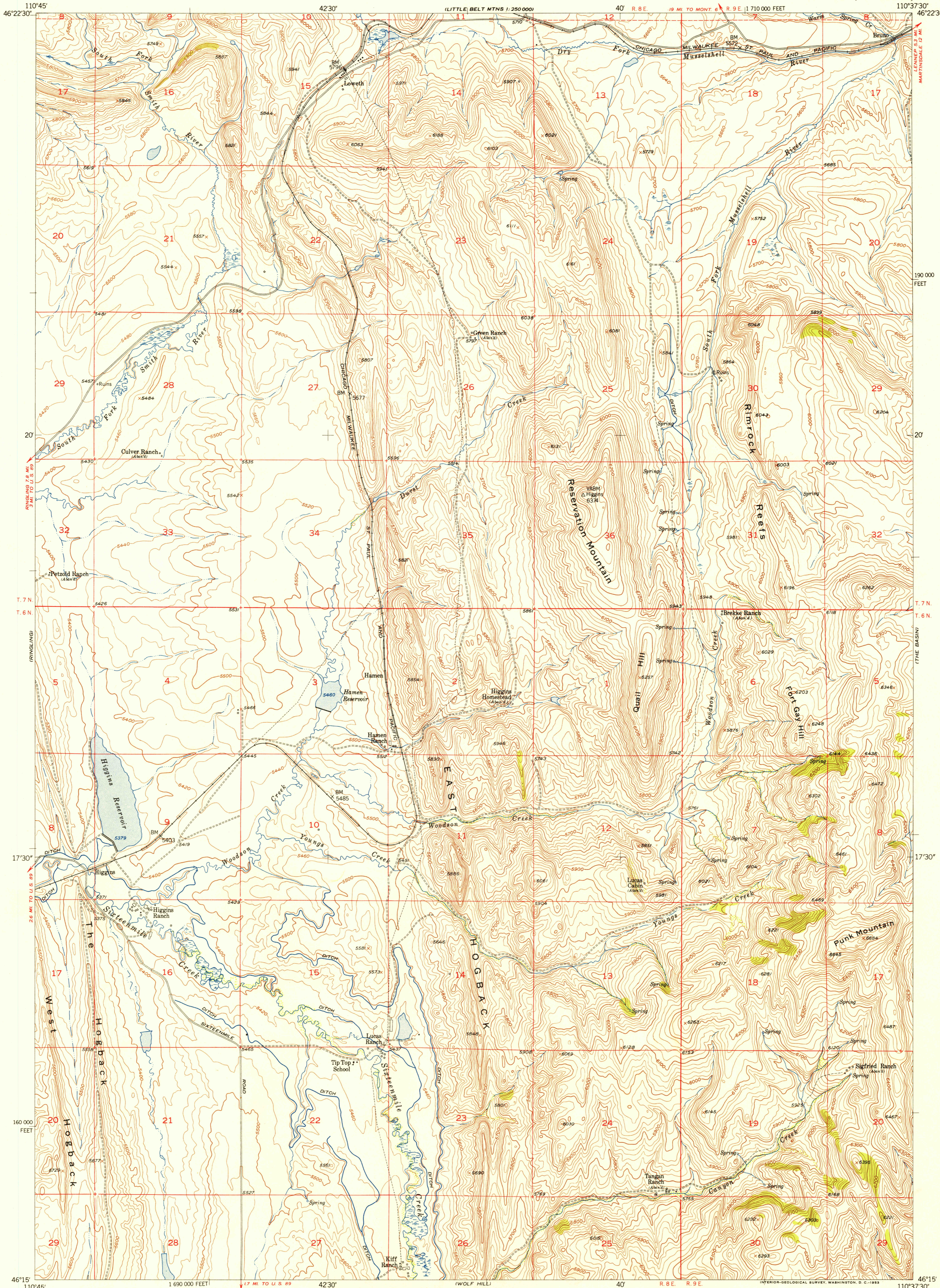
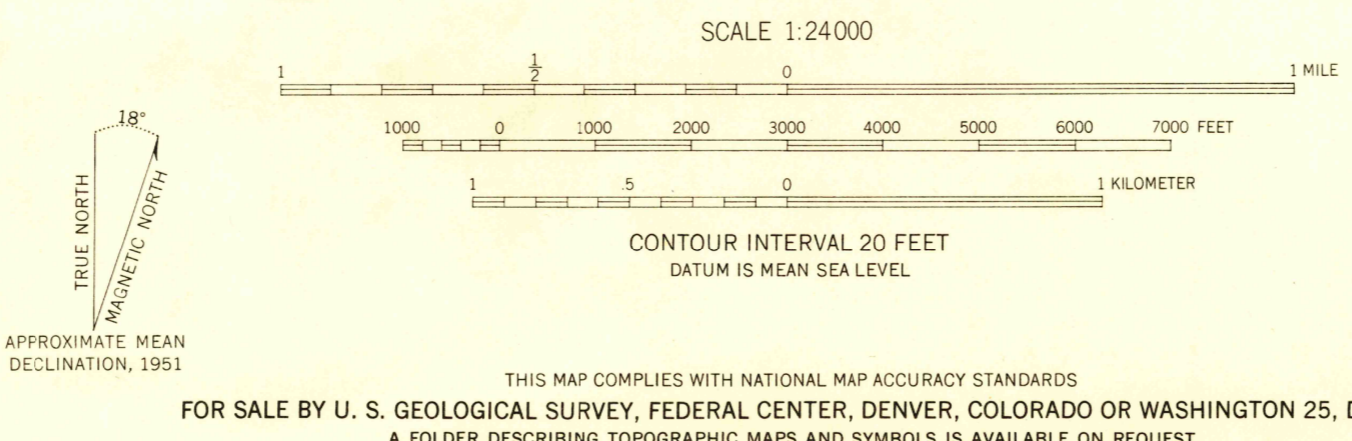


U.S.G.S.
FILE COPY
Inspection and Editing



Maped by the Geological Survey and the Bureau of Reclamation Field examination and publication by the Geological Survey as part of the Department of the Interior program for the development of the Missouri River Basin
Control by USGS and USC&GS
Topography from aerial photographs by stereophotogrammetric methods 1947 and 1951. Aerial photographs taken 1947 Field check 1951
Polyconic projection. 1927 North American datum 10,000-foot grid based on Montana coordinate system, central zone
Dashed land lines indicate approximate locations



ROAD CLASSIFICATION
Heavy-duty 4 LANE 6 LANE Light-duty
Medium-duty 4 LANE 6 LANE Unimproved dirt
U.S. Route State Route
HAMEN, MONT.
N4615-W11037.5/7.5
1951

USGS
Historical File
Topographic Division

U.S.G.S.
FILE COPY
Inspection and Editing