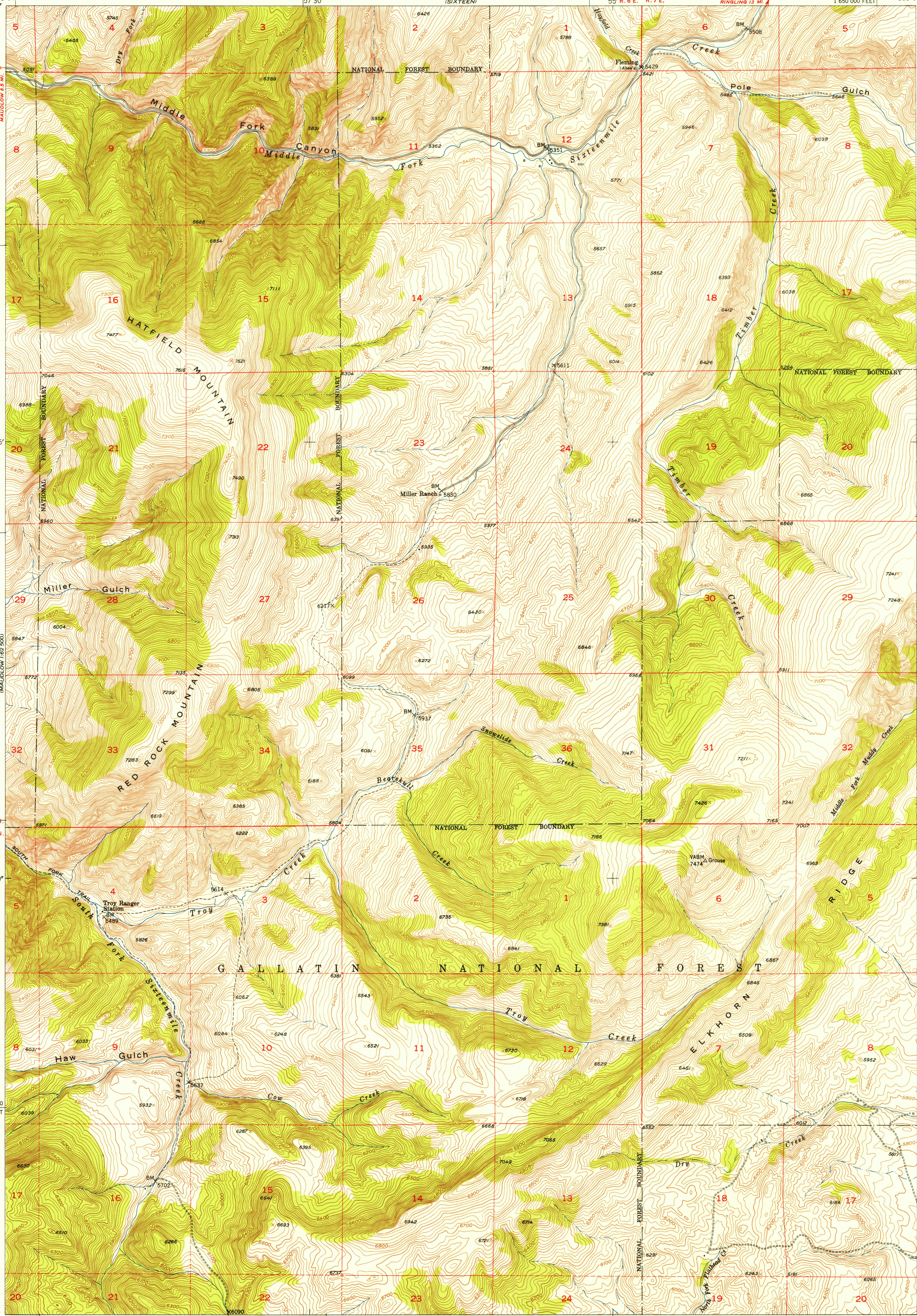
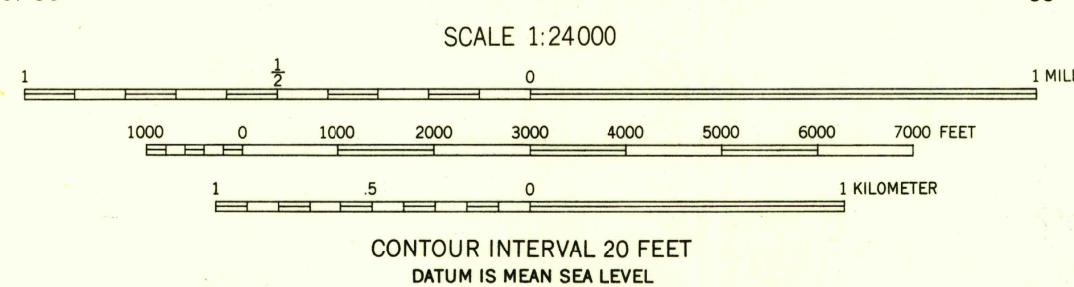
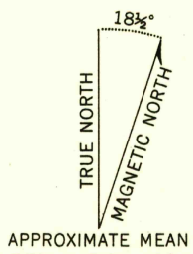


111°00' 46°07'30" 57°30' (SIXTEEN) 55° R. 6 E. R. 7 E. WHITE SULPHUR SPRINGS 24 MI. RINGLING 13 MI. 1 650 000 FEET 110°52'30" 46°07'30" (SIXTEEN P.E.)



Mapped by the Geological Survey and Bureau of Reclamation  
Field examination and publication by the Geological Survey  
as part of the Department of the Interior program  
for the development of the Missouri River Basin

Control by USGS and USC&GS  
Topography from aerial photographs by stereophotogrammetric  
methods 1948. Aerial photographs taken 1947  
Field check 1948 and 1951  
Polyconic projection. 1927 North American datum  
10,000-foot grid based on Montana coordinate system  
south zone  
Dashed land lines indicate approximate locations



ROAD CLASSIFICATION

Heavy-duty	4 LANE 16 LANE	Light-duty
Medium-duty	4 LANE 16 LANE	Unimproved dirt
U.S. Route		State Route



HATFIELD MOUNTAIN, MONT.  
N4600-W11052.5/7.5

THIS MAP COMPLIES WITH NATIONAL MAP ACCURACY STANDARDS  
FOR SALE BY U. S. GEOLOGICAL SURVEY, FEDERAL CENTER, DENVER, COLORADO OR WASHINGTON 25, D. C.  
A FOLDER DESCRIBING TOPOGRAPHIC MAPS AND SYMBOLS IS AVAILABLE ON REQUEST

1951

USGS  
Historical File  
Topographic Division