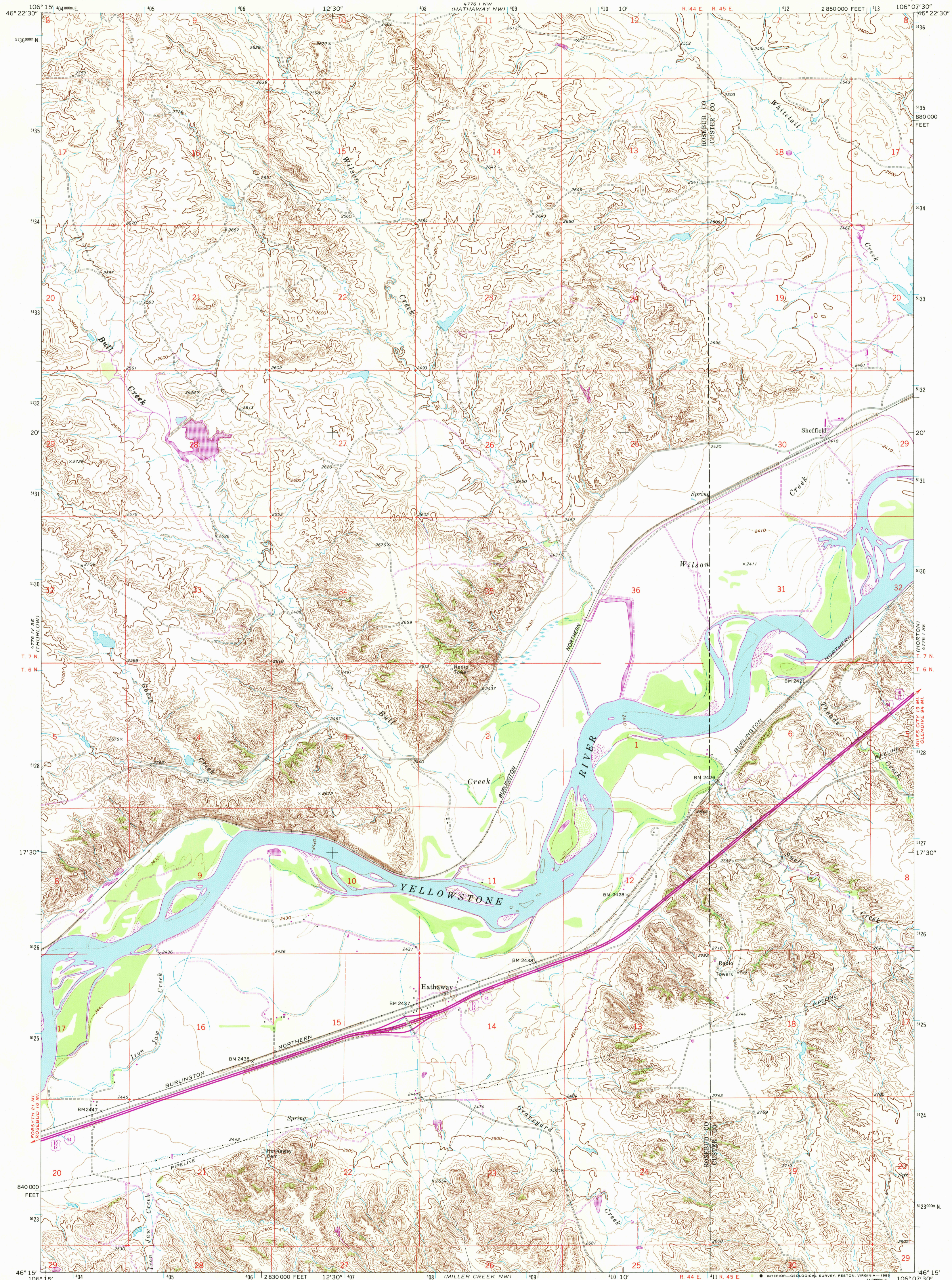


UNITED STATES
DEPARTMENT OF THE INTERIOR
GEOLOGICAL SURVEY

HATHAWAY QUADRANGLE
MONTANA
7.5 MINUTE SERIES (TOPOGRAPHIC)



Mapped, edited, and published by the Geological Survey

Control by USGS and NOS/NOAA

Topography by photogrammetric methods from aerial photographs taken 1966. Field checked 1968

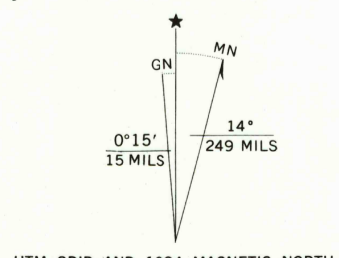
Polyconic projection. 1927 North American Datum

10,000-foot grid based on Montana coordinate system, south zone

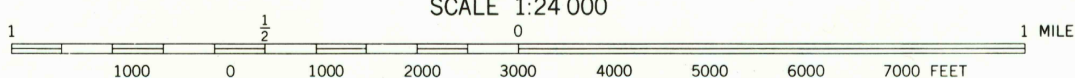
1000-meter Universal Transverse Mercator grid ticks, zone 13, shown in blue

Fine red dashed lines indicate selected fence lines

To place on the predicted North American Datum 1983 move the projection lines 6 meters north and 46 meters east as shown by dashed corner ticks



UTM GRID AND 1984 MAGNETIC NORTH DECLINATION AT CENTER OF SHEET



SCALE 1:24 000

CONTOUR INTERVAL 20 FEET

DOTTED LINES REPRESENT 10-FOOT CONTOURS

NATIONAL GEODETIC VERTICAL DATUM OF 1929

THIS MAP COMPLIES WITH NATIONAL MAP ACCURACY STANDARDS FOR SALE BY U. S. GEOLOGICAL SURVEY, DENVER, COLORADO 80225, OR RESTON, VIRGINIA 22092 A FOLDER DESCRIBING TOPOGRAPHIC MAPS AND SYMBOLS IS AVAILABLE ON REQUEST



QUADRANGLE LOCATION

Revisions shown in purple and woodland compiled from aerial photographs taken 1980 and other source data. This information not field checked. Map edited 1984

ROAD CLASSIFICATION

Primary highway, all weather, hard surface

Light-duty road, all weather, improved surface

Unimproved road, fair or dry weather

Interstate Route

U. S. Route

HATHAWAY, MONT.

46106-C2-TF-024

1968

PHOTOREVISED 1984

DMA 4776 I SW - SERIES 8984