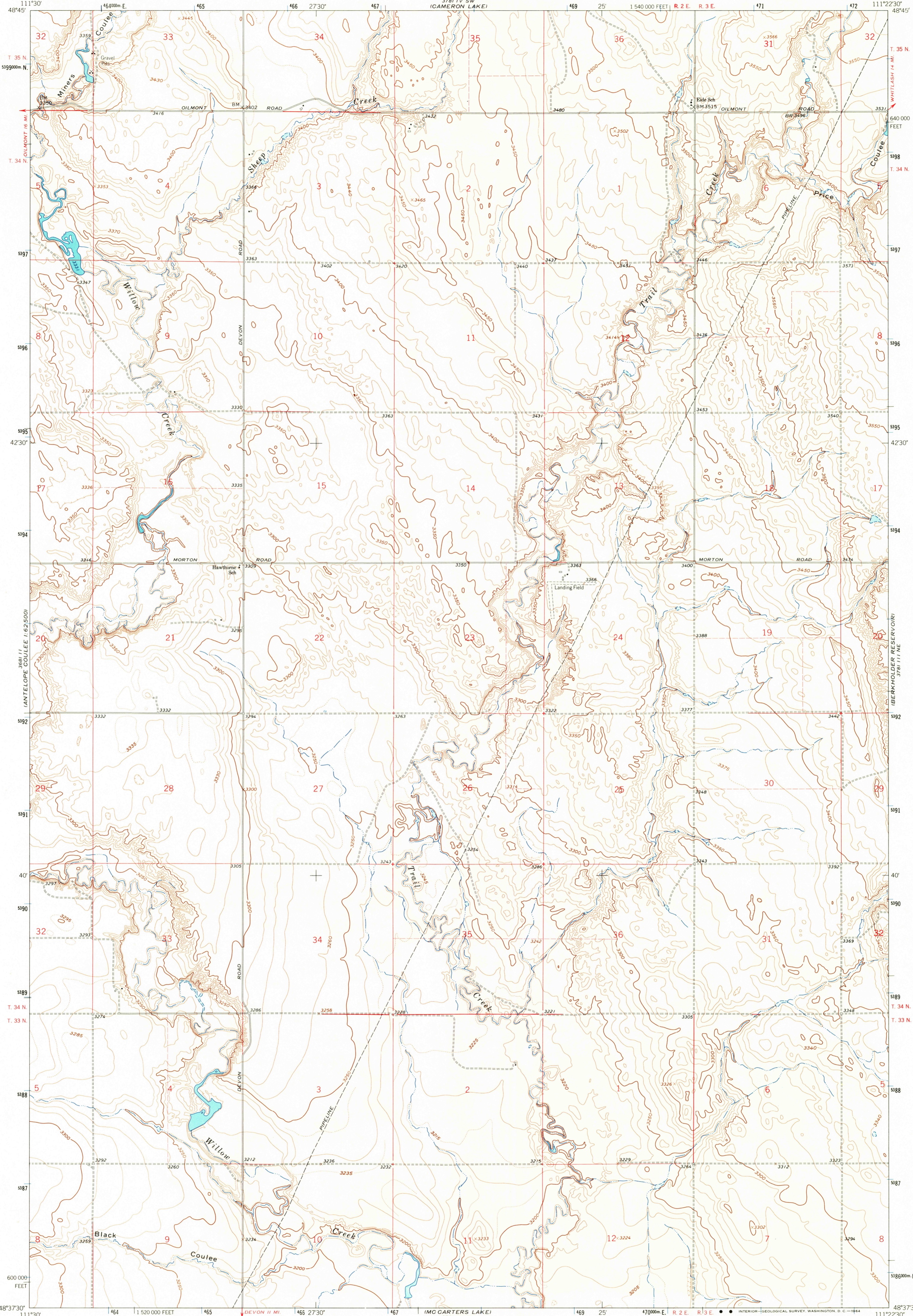


WES BUTTE  
1:25,000

UNITED STATES  
DEPARTMENT OF THE INTERIOR  
GEOLOGICAL SURVEY

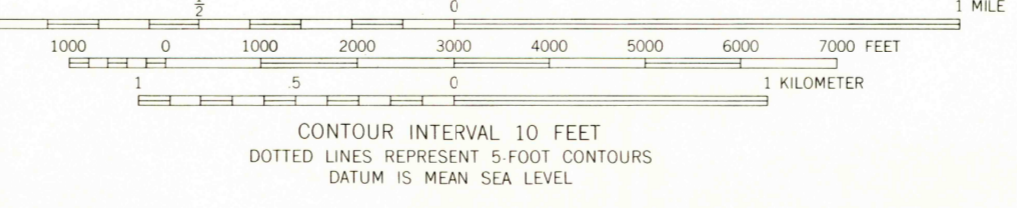
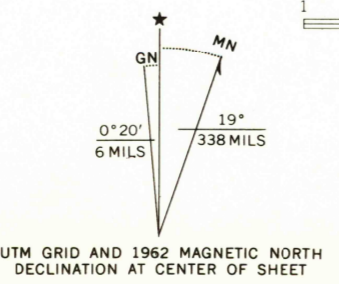
HAWTHORNE SCHOOL QUADRANGLE  
MONTANA-TOOLE CO.  
7.5 MINUTE SERIES (TOPOGRAPHIC)

3781 1/2 SE  
GRASSY BUTTE



3681 1/2  
ANTELOPE COULEE  
1:62,500

Mapped, edited, and published by the Geological Survey  
Control by USGS and USC&GS  
Topography by photogrammetric methods from aerial  
photographs taken 1961. Field checked 1962  
Polyconic projection: 1927 North American datum  
10,000-foot grid based on Montana coordinate system, north zone  
1000-meter Universal Transverse Mercator grid ticks,  
zone 12, shown in blue  
Fine red dashed lines indicate selected fence lines



ROAD CLASSIFICATION  
Light-duty ——— Unimproved dirt - - - - -

HAWTHORNE SCHOOL, MONT.  
N4837.5-W11122.5/7.5

2235

JUN 9 1964

THIS MAP COMPLIES WITH NATIONAL MAP ACCURACY STANDARDS  
FOR SALE BY U. S. GEOLOGICAL SURVEY, DENVER 25, COLORADO OR WASHINGTON 25, D. C.  
A FOLDER DESCRIBING TOPOGRAPHIC MAPS AND SYMBOLS IS AVAILABLE ON REQUEST

1962

AMS 3781 1/2 NW-SERIES V894