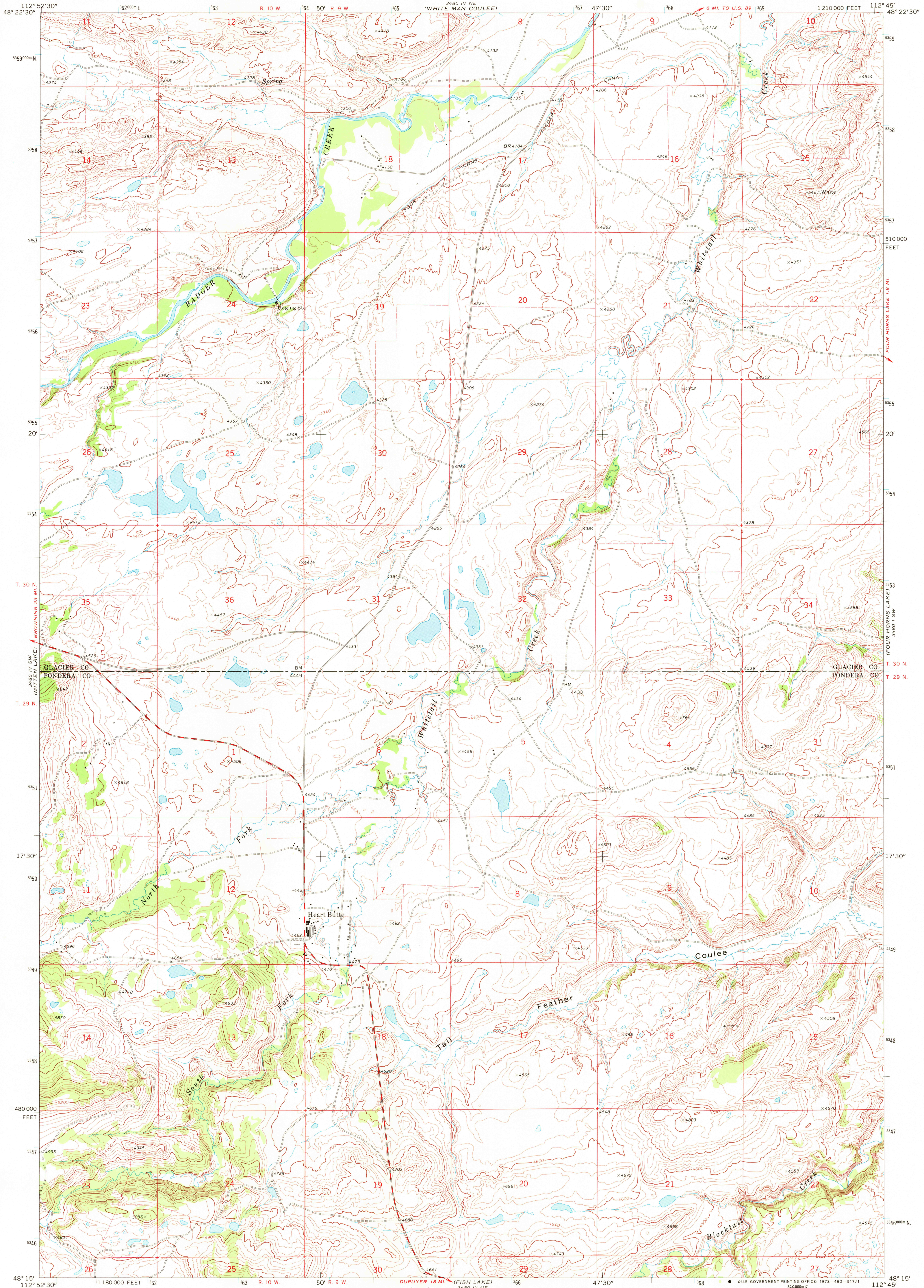
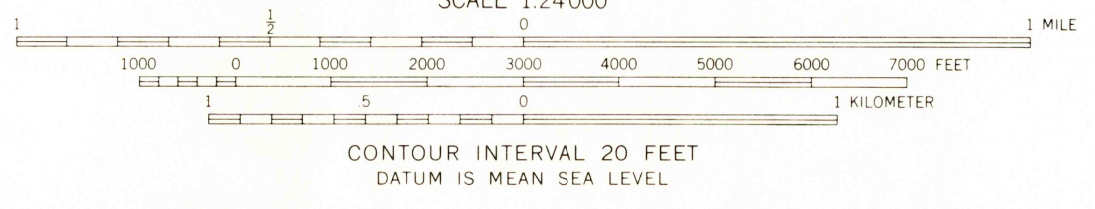
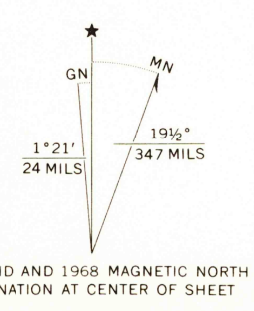


UNITED STATES
DEPARTMENT OF THE INTERIOR
GEOLOGICAL SURVEY

HEART BUTTE QUADRANGLE
MONTANA
7.5 MINUTE SERIES (TOPOGRAPHIC)



Mapped, edited, and published by the Geological Survey
Control by USGS and USC&GS
Topography by photogrammetric methods from aerial
photographs taken 1966. Field checked 1968
Polyconic projection. 1927 North American datum
10,000-foot grid based on Montana coordinate system,
north zone.
1000-meter Universal Transverse Mercator grid ticks,
zone 12, shown in blue
Fine red dashed lines indicate selected fence lines
Entire area lies within the boundary of the
Blackfeet Indian Reservation



ROAD CLASSIFICATION
Secondary highway, all weather. Light-duty road, all weather,
hard surface. Improved surface
Unimproved road, fair or dry
weather

HEART BUTTE, MONT.
N4815-W11245/7.5

1968
AMS 3480 IV SE—SERIES V894

JUL 3 1972

Denver 2000

USGS
HISTORICAL FILE
TOPOGRAPHIC DIVISION