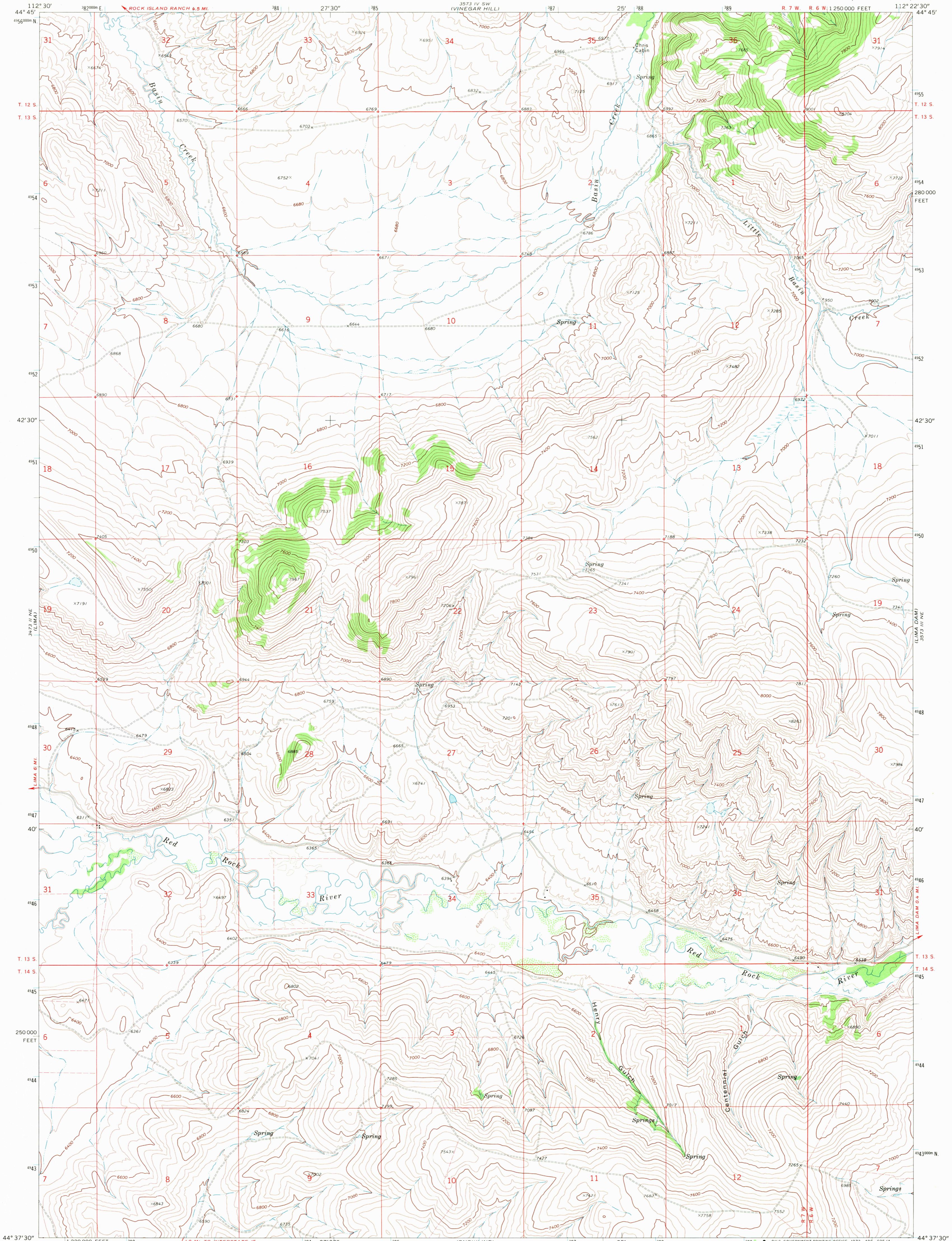


UNITED STATES
DEPARTMENT OF THE INTERIOR
GEOLOGICAL SURVEY

HENRY GULCH QUADRANGLE
MONTANA—BEAVERHEAD CO.
7.5 MINUTE SERIES (TOPOGRAPHIC)



Mapped, edited, and published by the Geological Survey

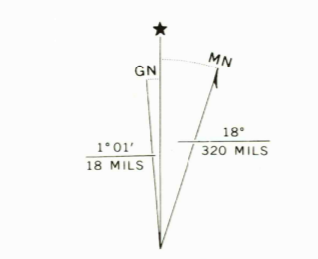
Control by USGS and USC&GS

Topography by photogrammetric methods from aerial photographs taken 1967. Field checked 1968

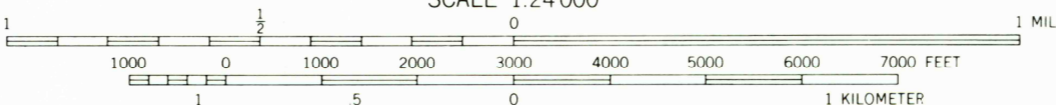
Polycyclic projection. 1927 North American datum. 10,000-foot grid based on Montana coordinate system, south zone

1000-meter Universal Transverse Mercator grid ticks, zone 12, shown in blue

Fine red dashed lines indicate selected fence lines



UTM GRID AND 1968 MAGNETIC NORTH DECLINATION AT CENTER OF SHEET



SCALE 1:24,000

CONTOUR INTERVAL 40 FEET
DOTTED LINES REPRESENT 20-FOOT CONTOURS
DATUM IS MEAN SEA LEVEL



QUADRANGLE LOCATION

ROAD CLASSIFICATION
Light-duty road, all weather, Unimproved road, fair or dry improved surface weather

THIS MAP COMPLIES WITH NATIONAL MAP ACCURACY STANDARDS
FOR SALE BY U.S. GEOLOGICAL SURVEY, DENVER, COLORADO 80225 OR WASHINGTON, D.C. 20542
A FOLDER DESCRIBING TOPOGRAPHIC MAPS AND SYMBOLS IS AVAILABLE ON REQUEST

HENRY GULCH, MONT.
N4437.5-W11222.5/7.5

1968

AMS 3573 III NW—SERIES V894

USGS HISTORICAL FILE TOPOGRAPHIC DIVISION

APR 24 1972

WHH
2000
Plan 50