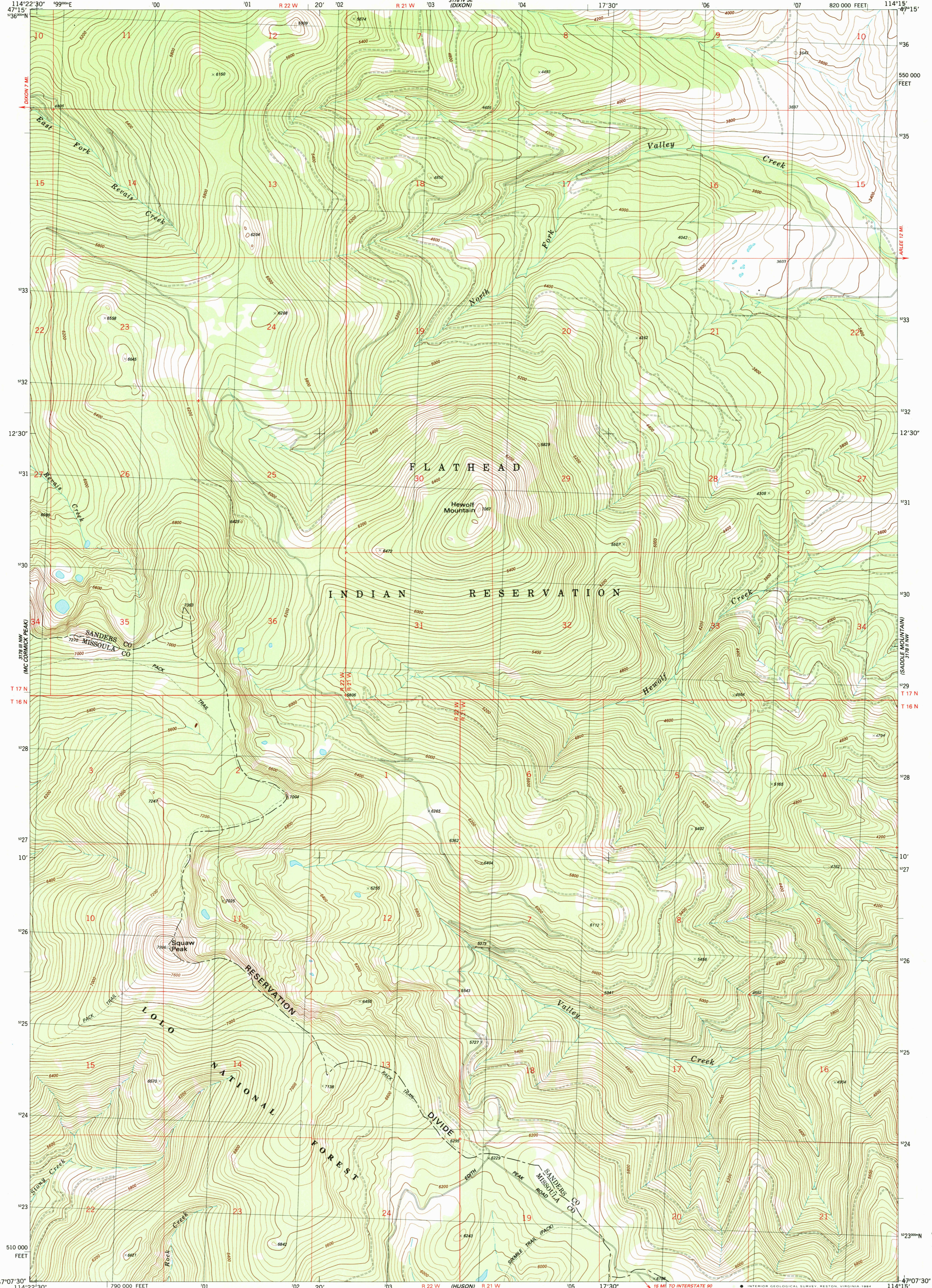
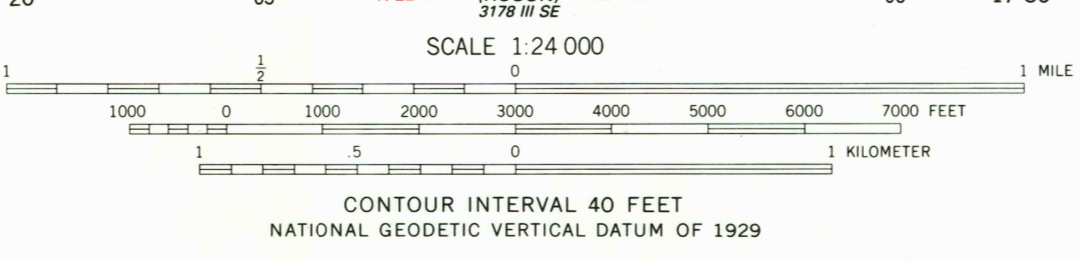
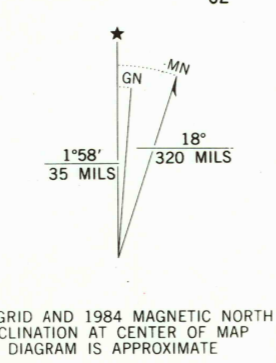


47°15'N
114°22'30"W

47°15'N
114°15'W



Mapped, edited, and published by the Geological Survey
Control by USGS and NOS/NOAA
Topography by photogrammetric methods from aerial photographs taken 1956. Field checked 1959. Revised from aerial photographs taken 1980. Field checked 1981. Map edited 1984
Projection and 10,000-foot grid ticks: Montana coordinate system, central zone (Lambert conformal conic) 1000-meter Universal Transverse Mercator grid, zone 11 1927 North American Datum
To place on the predicted North American Datum 1983 move the projection lines 12 meters north and 71 meters east as shown by dashed corner ticks
Fine red dashed lines indicate selected fence lines
There may be private holdings within the boundaries of the National or State reservations shown on this map



ROAD CLASSIFICATION

| | |
|---------------------------------|---|
| Primary highway, hard surface | Light-duty road, hard or improved surface |
| Secondary highway, hard surface | Unimproved road |
| Interstate Route | U.S. Route |
| | State Route |

HEWOLF MOUNTAIN, MONT.
NE4 ALBERTON 15' QUADRANGLE
47114-B3-TF-024

1984
DMA 3178 III NE-SERIES V994

THIS MAP COMPLIES WITH NATIONAL MAP ACCURACY STANDARDS
FOR SALE BY U.S. GEOLOGICAL SURVEY, DENVER, COLORADO 80225, OR RESTON, VIRGINIA 22092
A FOLDER DESCRIBING TOPOGRAPHIC MAPS AND SYMBOLS IS AVAILABLE ON REQUEST

RETURN TO:
USGS NHD HISTORICAL MAP ARCHIVES