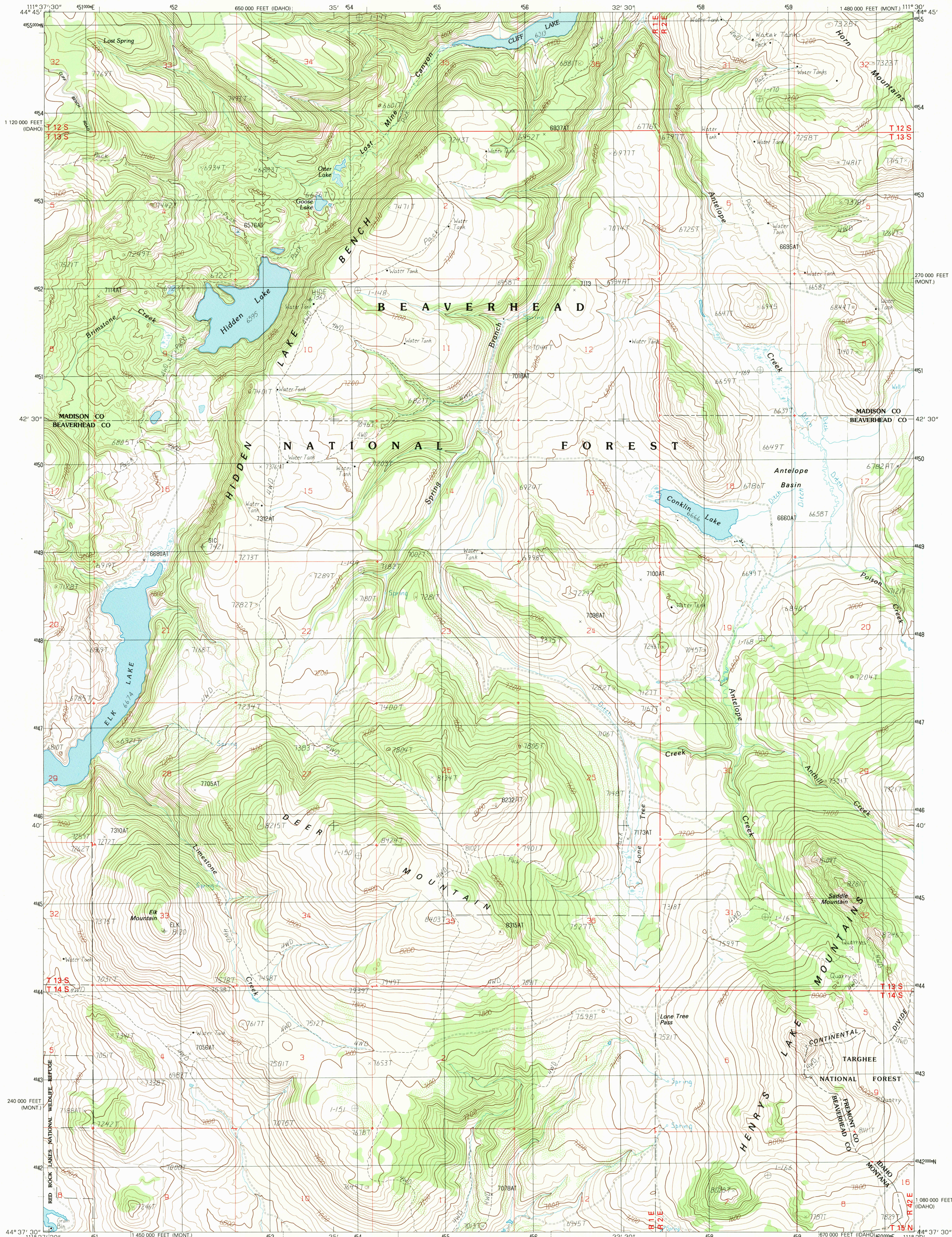


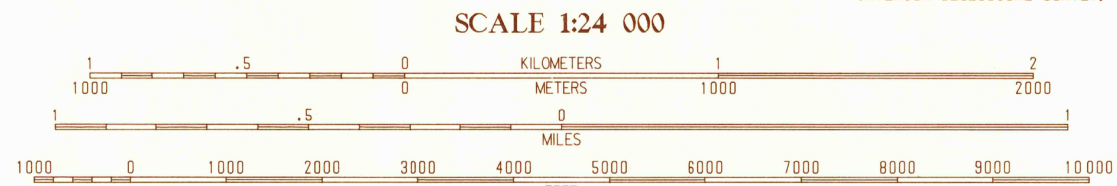
UNITED STATES
DEPARTMENT OF THE INTERIOR
GEOLOGICAL SURVEY

HIDDEN LAKE BENCH QUADRANGLE
MONTANA-IDAHO
7.5 MINUTE SERIES (TOPOGRAPHIC)



PRODUCED BY THE UNITED STATES GEOLOGICAL SURVEY
CONTROL BY: USGS, NOS/NOAA AND USFS
COMPILED FROM AERIAL PHOTOGRAPHS TAKEN: 1982
FIELD CHECKED: 1985 MAP EDITED: 1986
PROJECTION: LAMBERT CONFORMAL CONIC
GRID: 1000-METER UNIVERSAL TRANSVERSE MERCATOR, ZONE 12
8000-FOOT STATE GRID TICKS: MONTANA, SOUTH ZONE
IDAHO, EAST ZONE
UTM GRID DECLINATION: 0°24' WEST
1988 MAGNETIC NORTH DECLINATION: 15°30' EAST
VERTICAL DATUM: NATIONAL GEODETIC VERTICAL DATUM OF 1959
HORIZONTAL DATUM: 1927 NORTH AMERICAN DATUM
To place on the predicted North American Datum of 1983,
move the projection lines as shown by dashed corner ticks
(11 meters north and 64 meters east)
There may be private inholdings within the boundaries of any
Federal and State Reservations shown on this map.
No distinction made between houses, barns, and other buildings

PROVISIONAL MAP
Produced from original
manuscript drawings. Informa-
tion shown as of date of
photography.



SCALE INTERVAL 40 FEET

To convert feet to meters multiply by .3048
To convert meters to feet multiply by 3.2808

THIS MAP COMPLIES WITH NATIONAL MAP ACCURACY STANDARDS
FOR SALE BY U.S. GEOLOGICAL SURVEY, DENVER, COLORADO 80225
OR RESTON, VIRGINIA 22092

1	2	3	1 Freezeout Mountain
4	5	2 Cliff Lake	
6	7	3 Earthquake Lake	
		4 Elk Springs	
		5 Targhee Peak	
		6 Upper Red Rock Lake	
		7 Mount Jefferson	
		8 Sawdell Peak	

ADJOINING 7.5' QUADRANGLE NAMES

Improved Road
Unimproved Road
Trail

Interstate Route U.S. Route State Route

HIDDEN LAKE BENCH, MONT.-IDAHO
PROVISIONAL EDITION 1988

ROAD LEGEND

44111-15-TF-024

USGS NMD HISTORICAL MAP

MAR 23 1989

REC'D FILE COPY