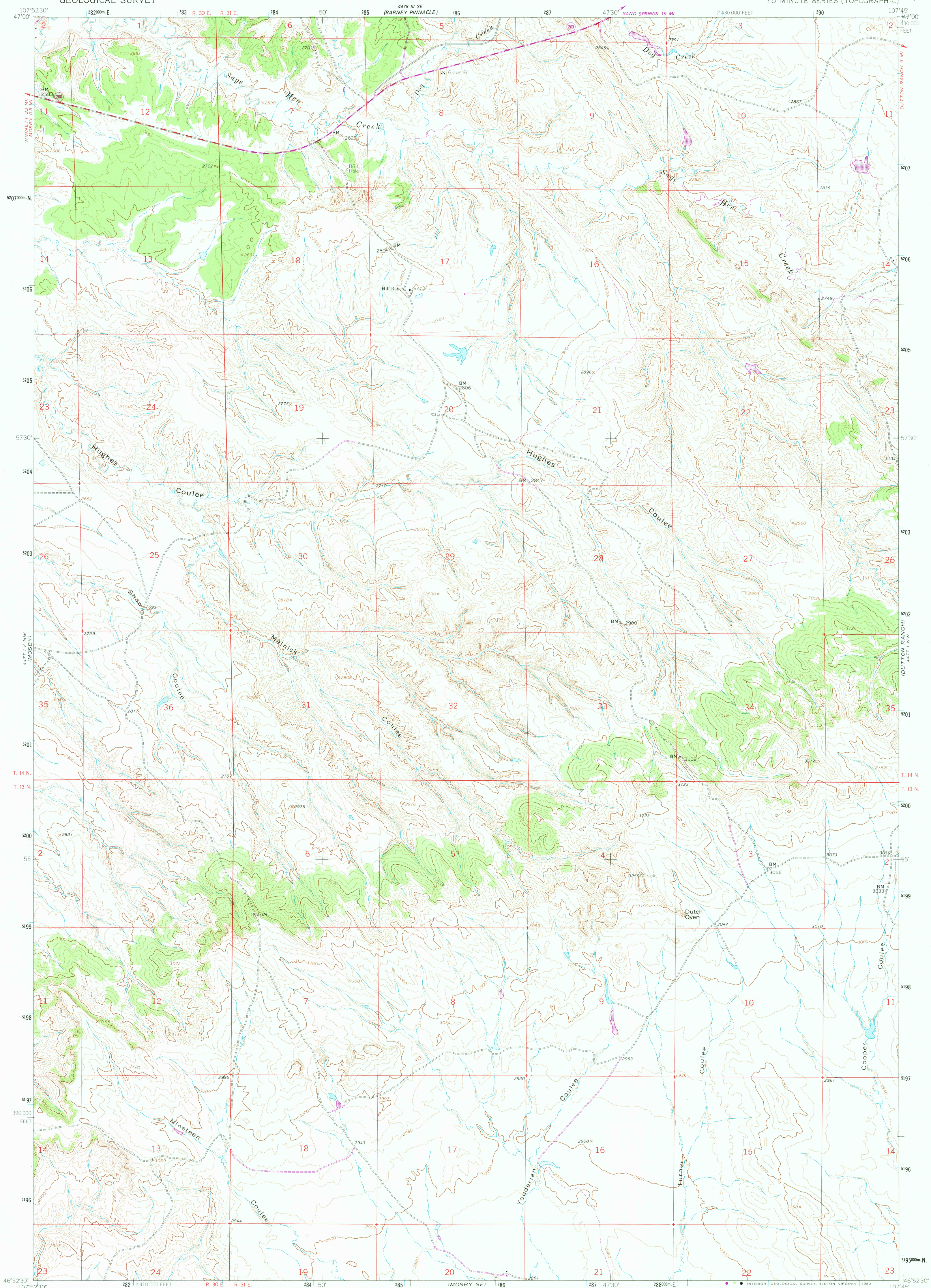
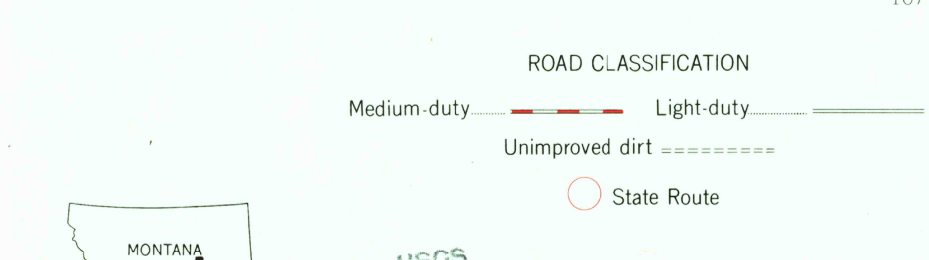
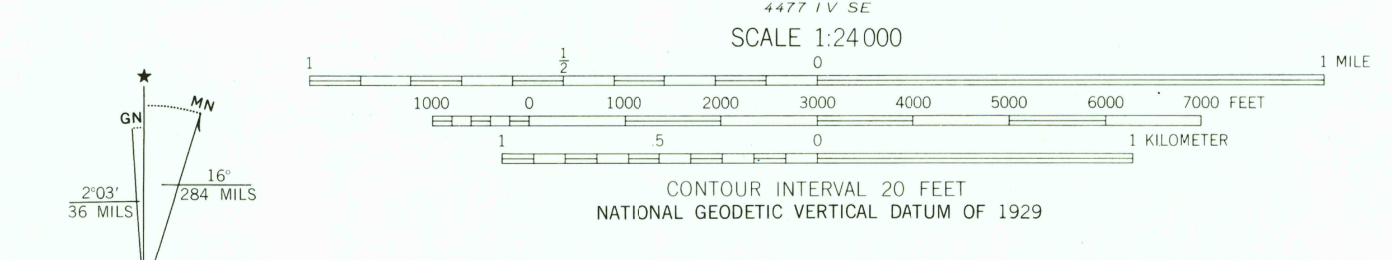


478 1/4 SW
(HILL RANCH)

478 1/4 SW
(FROELICH BUTTE)



Mapped, edited, and published by the Geological Survey
Control by USGS and USC&GS
Topography by photogrammetric methods from aerial photographs taken 1961. Field checked 1963
Polyconic projection. 1927 North American datum 10,000-foot grid based on Montana coordinate system, central zone 1000-meter Universal Transverse Mercator grid ticks, zone 13, shown in blue
Fine red dashed lines indicate selected fence lines
To place on the predicted North American Datum 1983 move the projection lines 6 meters north and 51 meters east as shown by dashed corner ticks
Revisions shown in purple compiled from aerial photographs taken 1978. Map edited 1980. This information not field checked



THIS MAP COMPLIES WITH NATIONAL MAP ACCURACY STANDARDS
FOR SALE BY U. S. GEOLOGICAL SURVEY, DENVER, COLORADO 80225, OR RESTON, VIRGINIA 22092
A FOLDER DESCRIBING TOPOGRAPHIC MAPS AND SYMBOLS IS AVAILABLE ON REQUEST

USGS
Historical File
Topographic Division
HILL RANCH, MONT.
N4652 5 - W10745 7.5
1963
PHOTOREVISED 1980
DMA 4477 IV NE - SERIES V894

OCT 29 1980
1975

MAXWELL RANCH
4477 IV SW

WINGFIELD RANCH
4477 I SW