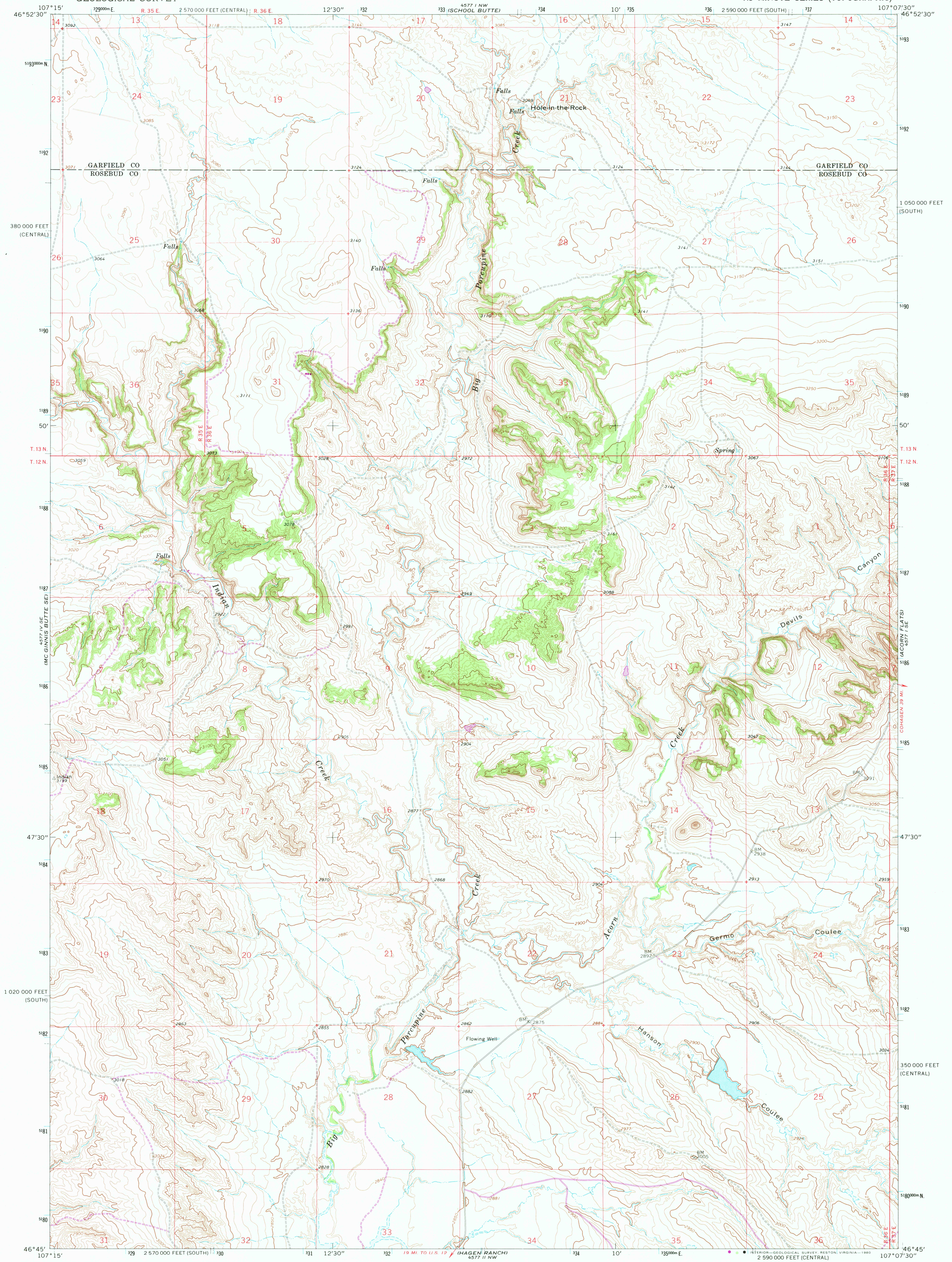


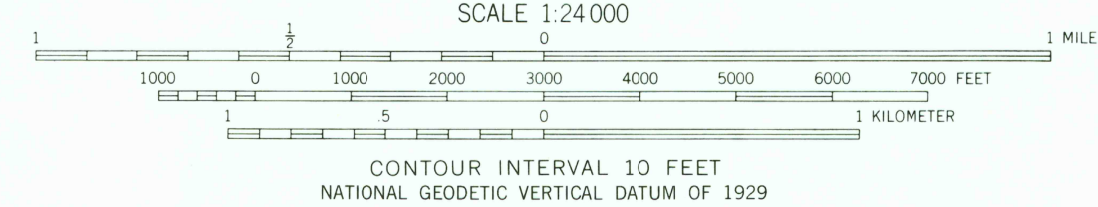
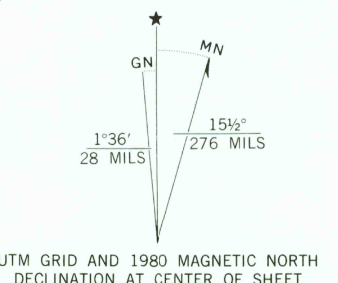
UNITED STATES
DEPARTMENT OF THE INTERIOR
GEOLOGICAL SURVEY

HOLE-IN-THE-ROCK QUADRANGLE
MONTANA
7.5 MINUTE SERIES (TOPOGRAPHIC)



Mapped, edited, and published by the Geological Survey

Control by USGS and USC&GS
Topography by photogrammetric methods from aerial photographs taken 1964. Field checked 1965
Polyconic projection. 1927 North American datum 10,000-foot grids based on Montana coordinate system, south and central zones
1000-meter Universal Transverse Mercator grid ticks, zone 13, shown in blue
Fine red dashed lines indicate selected fence lines
To place on the predicted North American Datum 1983 move the projection lines 6 meters north and 50 meters east as shown by dashed corner ticks
Revisions shown in purple compiled from aerial photographs taken 1978. Map edited 1980. This information not field checked



CONTOUR INTERVAL 10 FEET
NATIONAL GEODETIC VERTICAL DATUM OF 1929

THIS MAP COMPLIES WITH NATIONAL MAP ACCURACY STANDARDS
FOR SALE BY U.S. GEOLOGICAL SURVEY, DENVER, COLORADO 80225, OR RESTON, VIRGINIA 22092
A FOLDER DESCRIBING TOPOGRAPHIC MAPS AND SYMBOLS IS AVAILABLE ON REQUEST

ROAD CLASSIFICATION
Light-duty ————— Unimproved dirt - - - - -

USGS
Historical File
Topographic Division

1965
PHOTOREVISED 1980
DMA 4577 1 SW - SERIES V894

QUADRANGLE LOCATION

MONTANA

HOLE-IN-THE-ROCK, MONT.
N4645-W10707.5/7.5

OCT 29 1980
1900