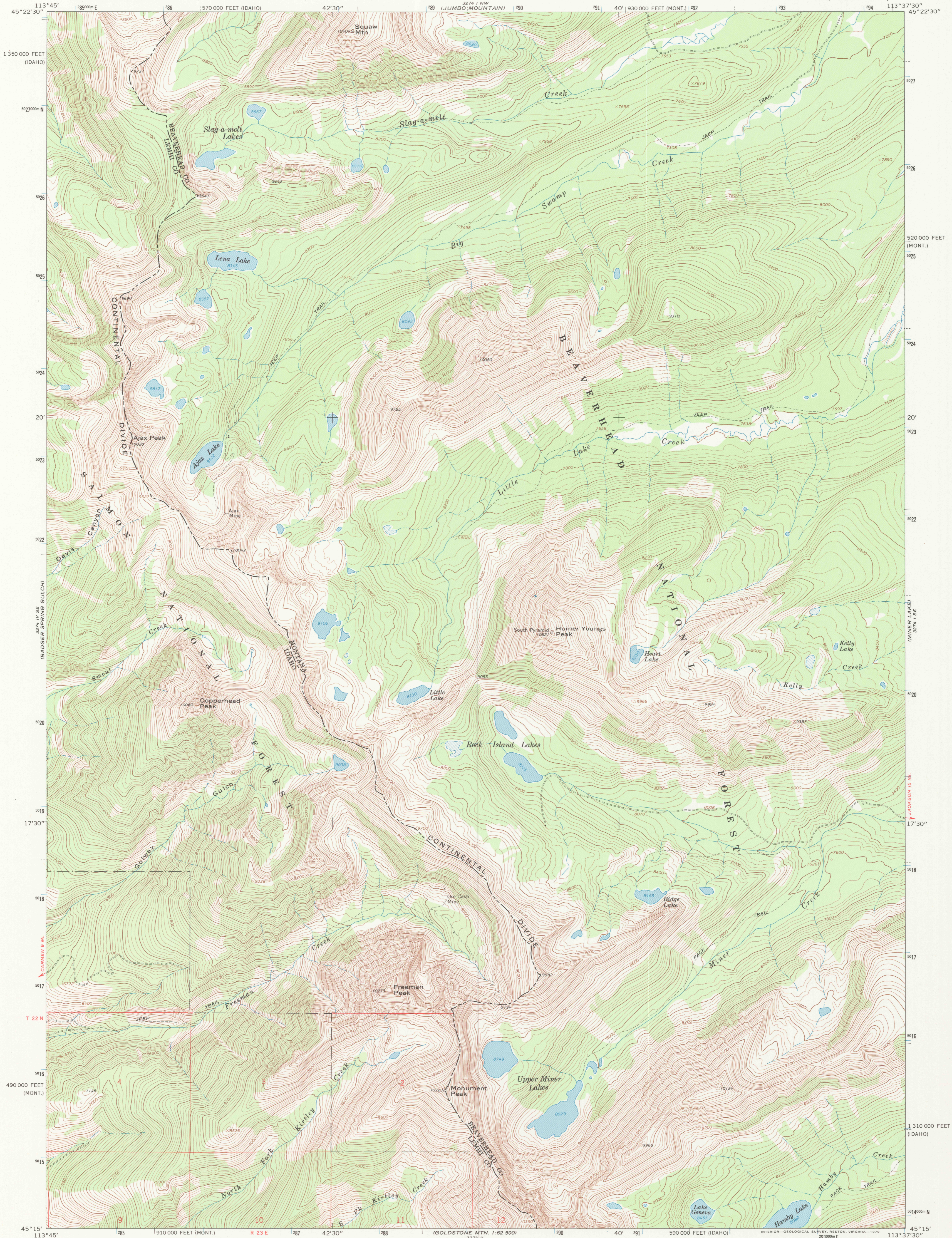


UNITED STATES  
DEPARTMENT OF THE INTERIOR  
GEOLOGICAL SURVEY

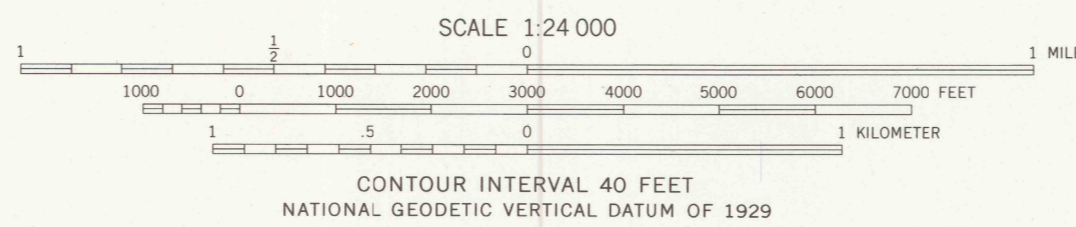
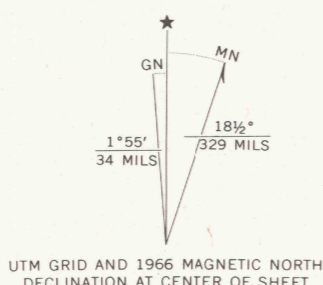
HOMER YOUNGS PEAK QUADRANGLE  
MONTANA-IDAHO  
7.5 MINUTE SERIES (TOPOGRAPHIC)



Mapped, edited, and published by the Geological Survey  
Control by USGS and USC&GS

Topography by photogrammetric methods from aerial photographs taken 1965. Field checked 1966  
Polyconic projection. 1927 North American datum 10,000-foot grids based on Montana coordinate system, south zone and Idaho coordinate system, central zone-1000-meter Universal Transverse Mercator grid ticks, zone 12, shown in blue

Where omitted, land lines have not been established  
There may be private holdings within the boundaries of the National or State reservations shown on this map

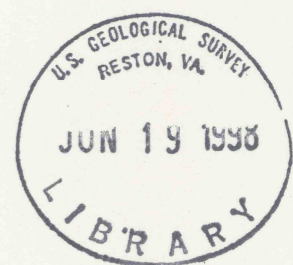


HOMER YOUNGS PEAK, MONT.-IDAHO  
N4515-W11337.5/7.5

1966

DMA 3274 1 SW-SERIES V894

ROAD CLASSIFICATION  
Unimproved dirt -----



THIS MAP COMPLIES WITH NATIONAL MAP ACCURACY STANDARDS  
FOR SALE BY U.S. GEOLOGICAL SURVEY, P.O. BOX 25286, DENVER, COLORADO 80225  
A FOLDER DESCRIBING TOPOGRAPHIC MAPS AND SYMBOLS IS AVAILABLE ON REQUEST