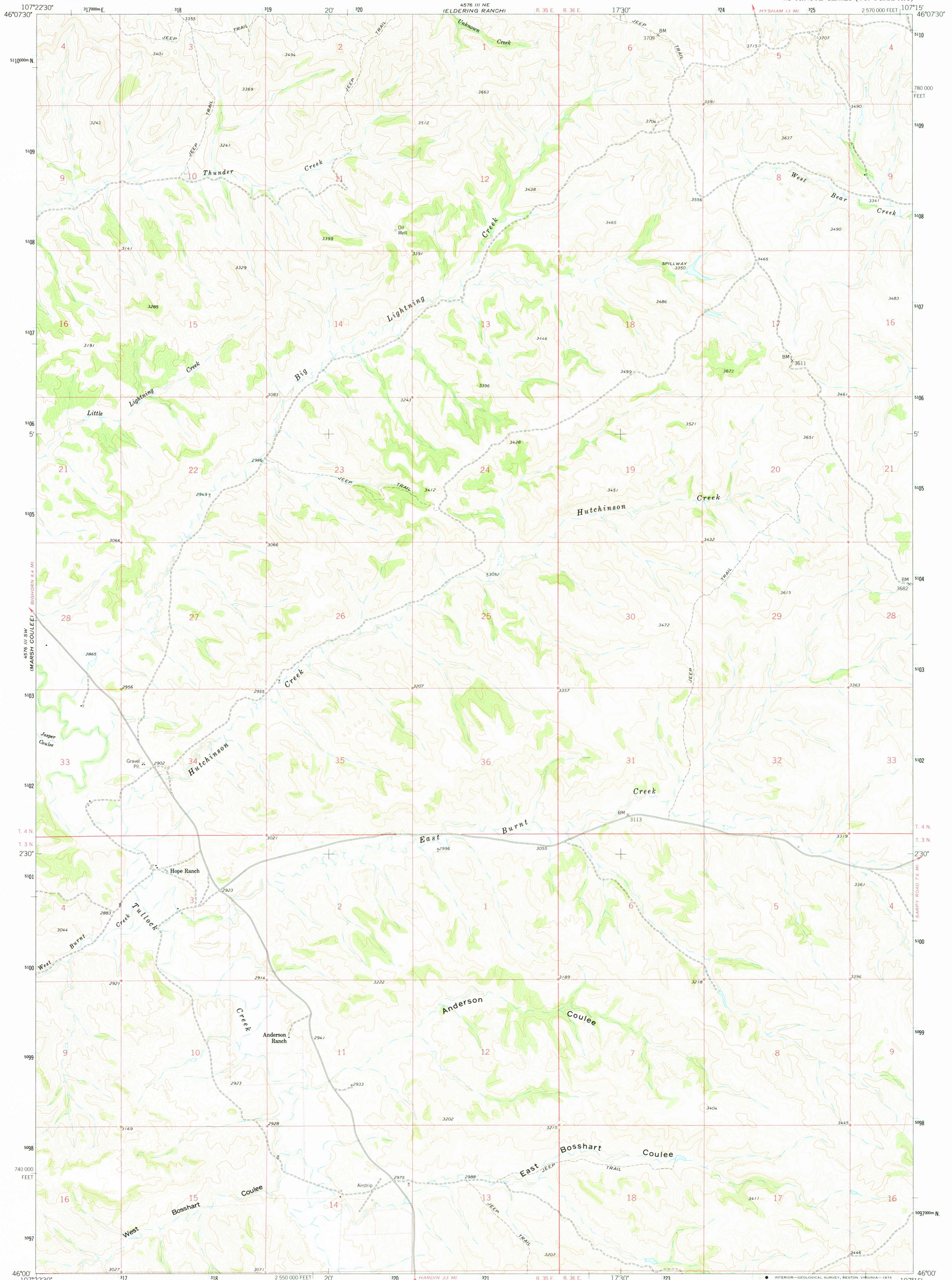


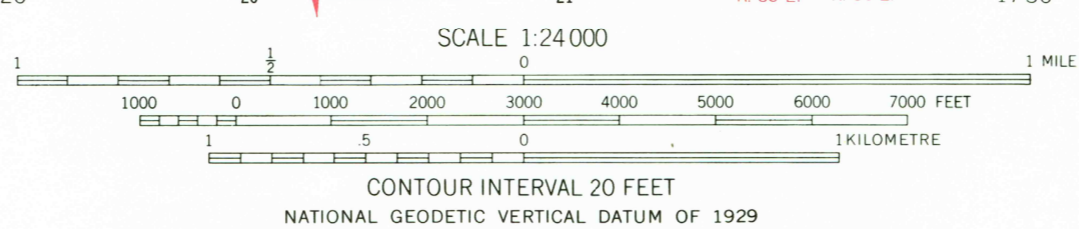
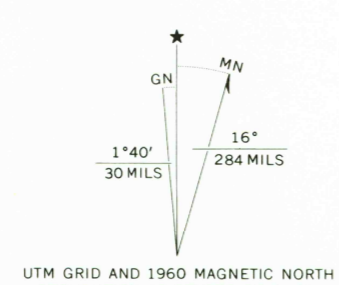
46°07'30" N

UNITED STATES
DEPARTMENT OF THE INTERIOR
GEOLOGICAL SURVEY

HOPE RANCH QUADRANGLE
MONTANA—TREASURE CO.
7.5 MINUTE SERIES (TOPOGRAPHIC)



Mapped, edited, and published by the Geological Survey as part of the Department of the Interior program for the development of the Missouri River Basin
Control by USGS and USC&GS
Topography from aerial photographs by photogrammetric methods
Aerial photographs taken 1956. Field check 1960
Polyconic projection. 1927 North American datum
10,000-foot grid based on Montana coordinate system, south zone
1000 metre Universal Transverse Mercator grid ticks, zone 13, shown in blue
Fine red dashed lines indicate selected fence and field lines where generally visible on aerial photographs
This information is unchecked



ROAD CLASSIFICATION
Light-duty ——— Unimproved dirt ———

THIS MAP COMPLIES WITH NATIONAL MAP ACCURACY STANDARDS
FOR SALE BY U. S. GEOLOGICAL SURVEY, DENVER, COLORADO 80225, OR RESTON, VIRGINIA 22092
A FOLDER DESCRIBING TOPOGRAPHIC MAPS AND SYMBOLS IS AVAILABLE ON REQUEST

USGS
HISTORICAL FILE
TOPOGRAPHIC DIVISION

HOPE RANCH, MONT.
N4600—W10715/7.5
1960
AMS 4576 III SE—SERIES V894

JUN 9 1975
2150