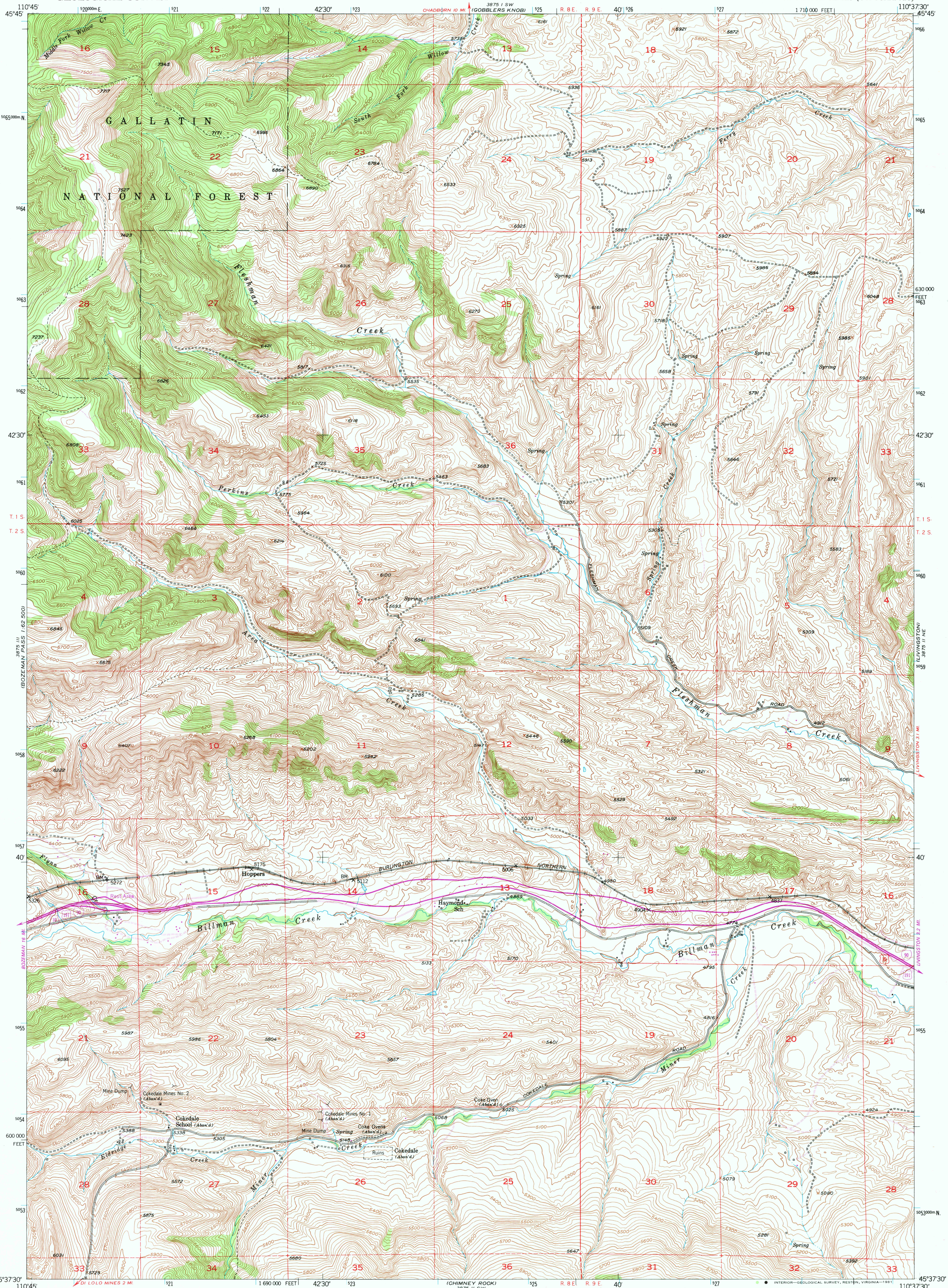


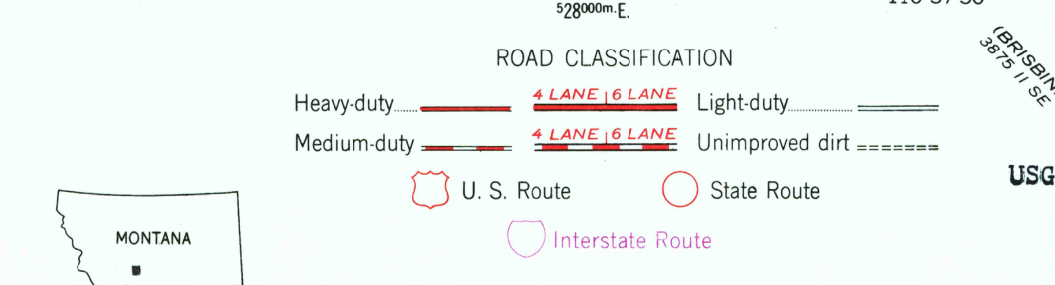
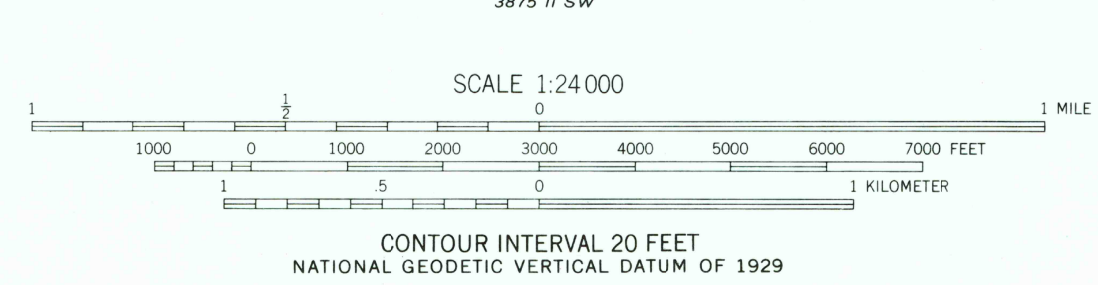
UNITED STATES
DEPARTMENT OF THE INTERIOR
GEOLOGICAL SURVEY

HOPPERS QUADRANGLE
MONTANA-PARK CO.
7.5 MINUTE SERIES (TOPOGRAPHIC)



Mapped, edited, and published by the Geological Survey as part of the Department of the Interior program for the development of the Missouri River Basin
Control by USGS and NOS/NOAA
Topography from aerial photographs by multiplex methods by Ryal Engineering Co. Aerial photographs taken 1948
Field check 1951
Polyconic projection. 1927 North American datum
10,000-foot grid based on Montana coordinate system south zone
Dashed land lines indicate approximate locations
1000-meter Universal Transverse Mercator grid ticks, zone 12, shown in blue
There may be private inholdings within the boundaries of the National or State reservations shown on this map

Revisions shown in purple and woodland compiled from aerial photographs taken 1977 and other source data. This information not field checked. Map edited 1981



QUADRANGLE LOCATION
To place on the predicted North American Datum 1983
move the projection lines 10 meters north and
61 meters east as shown by dashed corner ticks

RETURN TO:
USGS NMD HISTORICAL MAP ARCHIVES

DEC 14 1981
1975

HOPPERS, MONT.
N4537.5-W11037.5/7.5
1951
PHOTOREVISED 1981
DMA 3875 II NW-SERIES V894