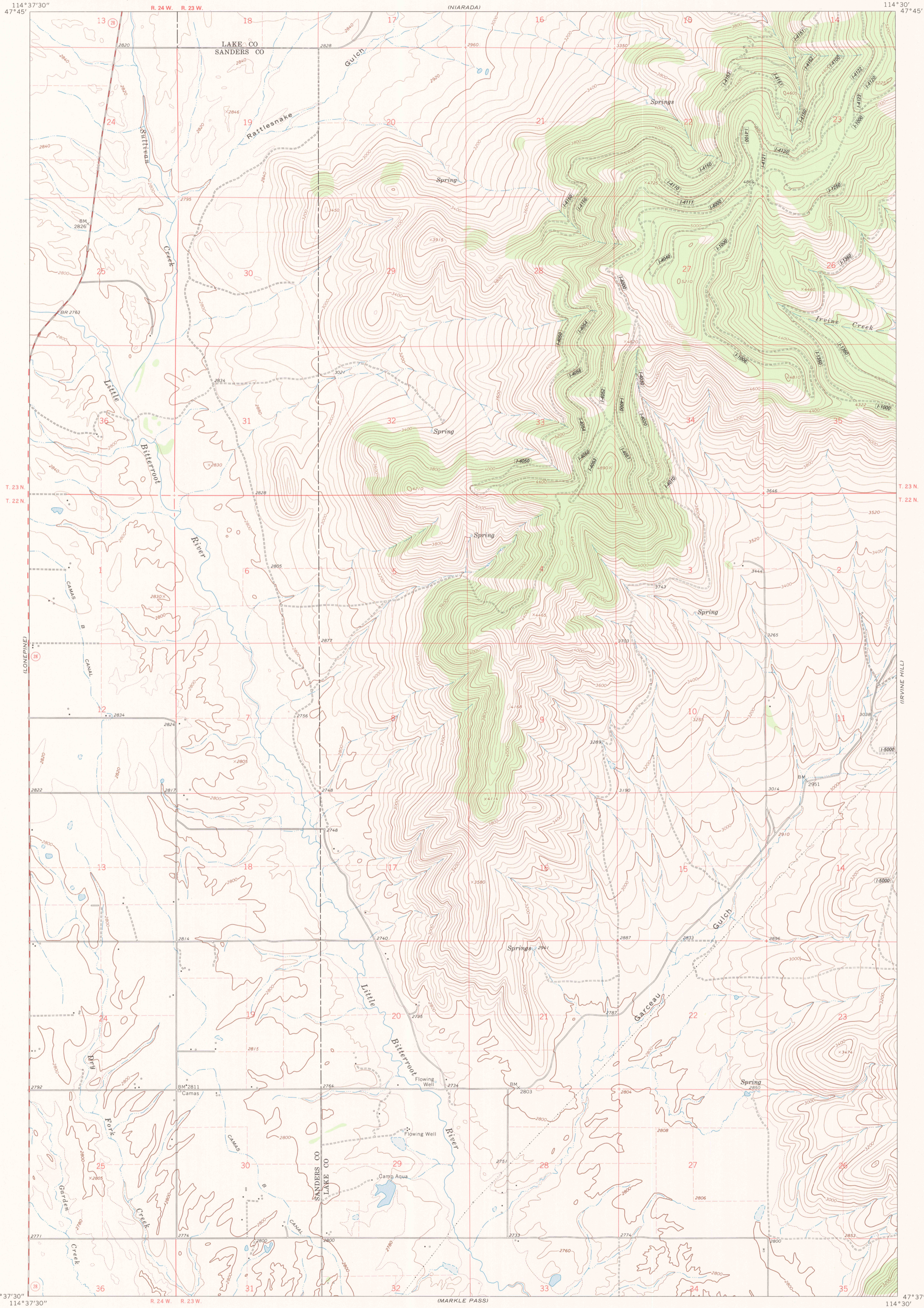
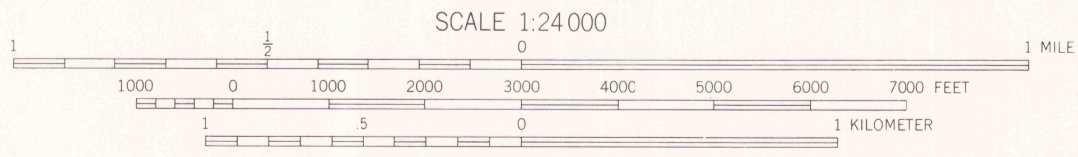


HOT SPRINGS NE QUADRANGLE  
FLATHEAD INDIAN RESERVATION  
7.5 MINUTE SERIES (TOPOGRAPHIC)

UNITED STATES  
DEPARTMENT OF THE INTERIOR  
BUREAU OF INDIAN AFFAIRS



ROADS		BOUNDARIES	
Paved road	—	County	—
Surface light duty or improved dirt road	- - -	Reservation	- - -
Unimproved dirt road	· · · · ·	Total Wilderness	· · · · ·
Four wheel drive road	- · - · -	Total Private Area	- · - · -
Route designation shield	□	Power transmission line	— — — — —
RAILROADS		CFI Plot location	○
Single track	— + — + —	Aerial photo centers 1980 & 1981 flight	⊕
LAND LINES		Indicated corner	⊕
Surveyed	— · — · —	Found corner	⊕
Protected	— · — · —		
Fence lines	— · — · —		



CONTOUR INTERVAL 40 FEET  
DOTTED LINES REPRESENT 20-FOOT CONTOURS  
DATUM IS MEAN SEA LEVEL  
NATIONAL GEODETIC VERTICAL DATUM OF 1929  
CONTROL BY USGS AND NOS/NOAA

1988 MAGNETIC NORTH  
DECLINATION AT CENTER OF SHEET IS 18°



RETURN TO:  
USGS MMD HISTORICAL MAP ARCHIVES

Prepared by the Geological Survey for  
the Bureau of Indian Affairs, Flathead Agency  
Compiled in 1988 from USGS 1:24,000-scale quadrangle dated 1964  
Revised from aerial photographs taken 1977 and other source data provided by BIA

HOT SPRINGS NE, MONT.  
FLATHEAD INDIAN RESERVATION