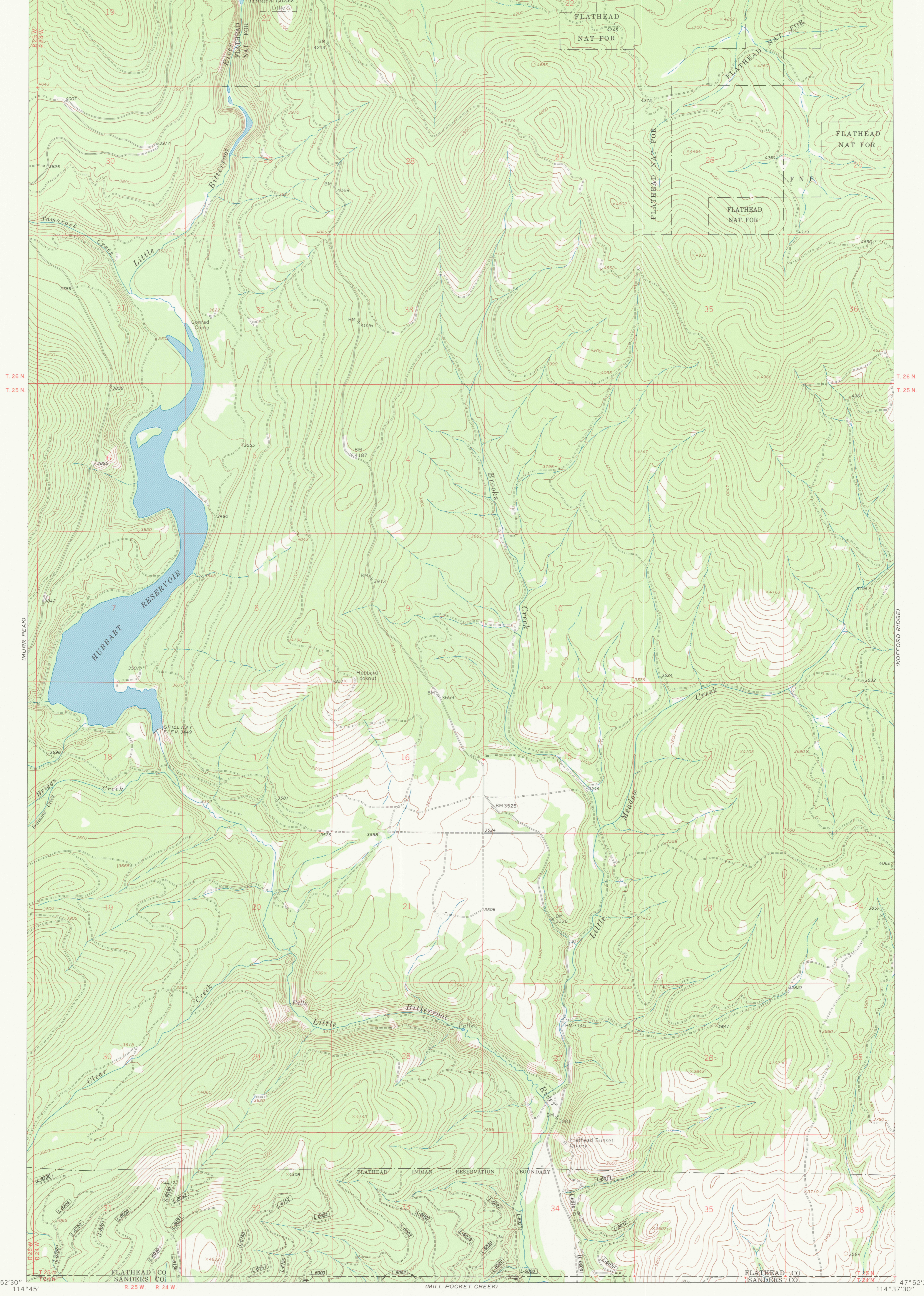


HUBBART RESERVOIR QUADRANGLE
 FLATHEAD INDIAN RESERVATION
 7.5 MINUTE SERIES (TOPOGRAPHIC)

UNITED STATES
 DEPARTMENT OF THE INTERIOR
 BUREAU OF INDIAN AFFAIRS

114°45'
 48'00"

114°37'30"
 48'00"

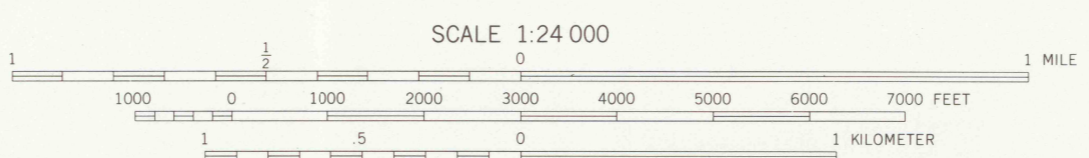


47°52'30"
 114°45'

47°52'30"
 114°37'30"

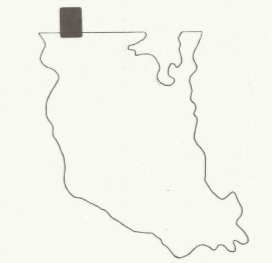
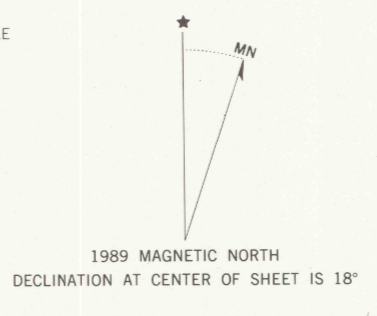
LEGEND

ROADS	BOUNDARIES
Paved road	County
Surfaced light duty or improved dirt road	Reservation
Unimproved dirt road	Tribal Wilderness
Four wheel drive trail	Tribal Primitive Area
Route designation shield	Power transmission line
RAILROADS	CFI Plot location
Single track	Aerial photo centers 1980 & 1981 flight
LAND LINES	Indicated corner
Surveyed	Found corner
Protected	
Fence lines	



CONTOUR INTERVAL 40 FEET
 DATUM IS MEAN SEA LEVEL
 NATIONAL GEODETIC VERTICAL DATUM OF 1929
 CONTROL BY USGS AND NOS/NOAA

Prepared by the Geological Survey for
 the Bureau of Indian Affairs, Flathead Agency
 Compiled in 1989 from USGS 1:24,000-scale quadrangle dated 1964
 Revised from aerial photographs taken 1979 and other source data provided by BIA



RETURN TO:
 USGS FID HISTORICAL MAP ARCHIVE

HUBBART RESERVOIR, MONT.
 FLATHEAD INDIAN RESERVATION