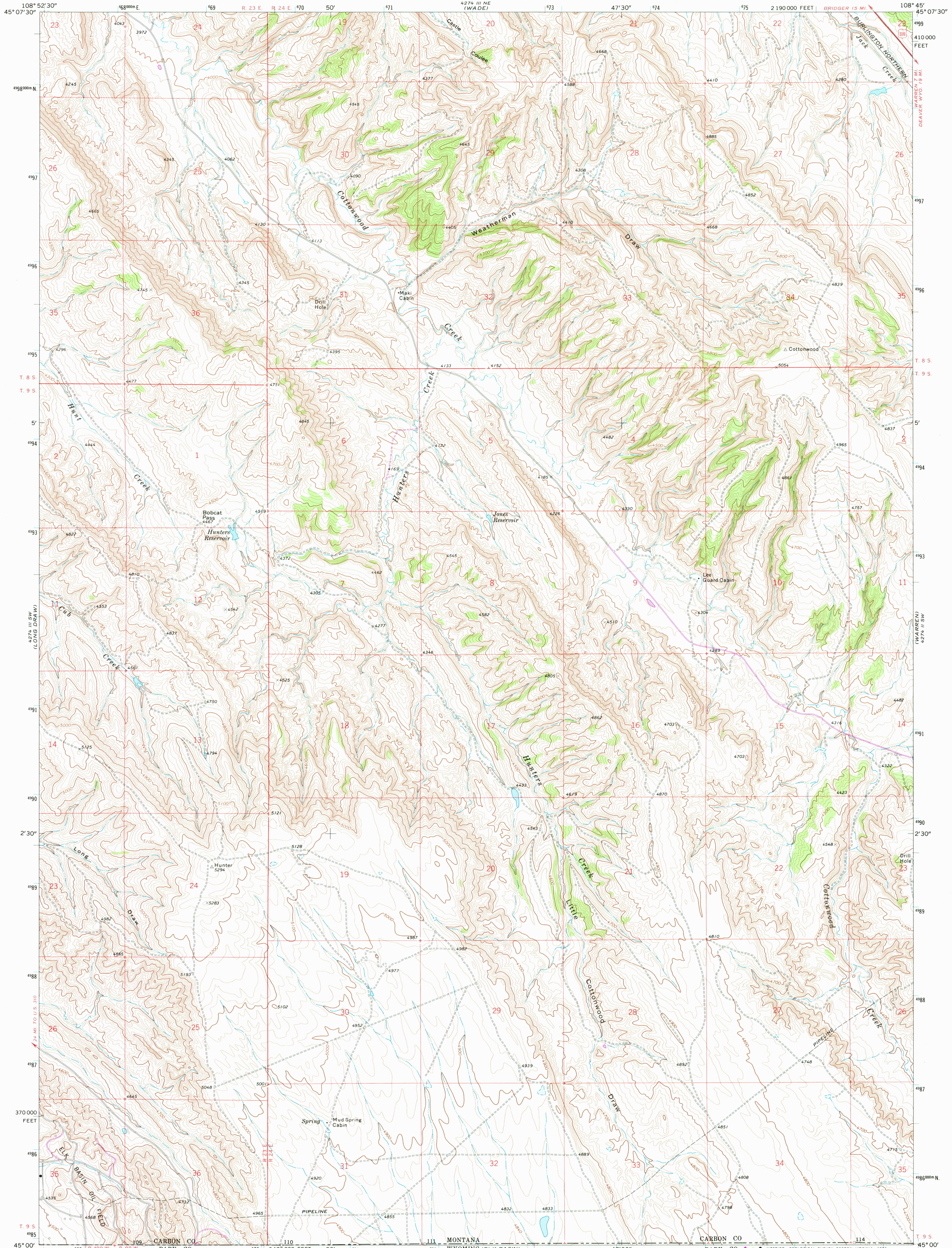


UNITED STATES
DEPARTMENT OF THE INTERIOR
GEOLOGICAL SURVEY

HUNTERS CREEK QUADRANGLE
MONTANA-WYOMING
7.5 MINUTE SERIES (TOPOGRAPHIC)



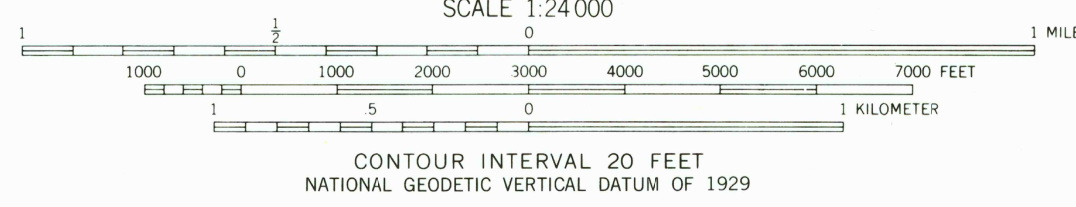
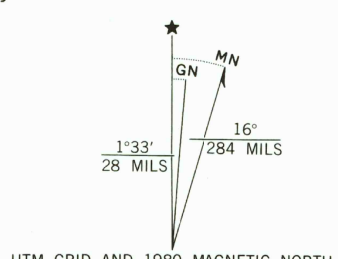
Mapped, edited, and published by the Geological Survey
Control by USGS and USC&GS

Topography by photogrammetric methods from aerial
photographs taken 1968. Field checked 1969

Polyconic projection. 1927 North American datum
10,000-foot grid based on Montana coordinate system,
south zone

1000-meter Universal Transverse Mercator grid ticks,
zone 12, shown in blue
To place on the predicted North American Datum 1983
move the projection lines 9 meters north and
54 meters east as shown by dashed corner ticks

Revisions shown in purple compiled from aerial photographs taken
1978. Map edited 1980. This information not field checked



ROAD CLASSIFICATION

Primary highway, hard surface	Light-duty road, hard or improved surface
Secondary highway, hard surface	Unimproved road
Interstate Route	U. S. Route
	State Route

HUNTERS CREEK, MONT.-WYO.
N4500-W10845/7.5

1969
PHOTOREVISED 1980
DMA 4274 III SE-SERIES V894

THIS MAP COMPLIES WITH NATIONAL MAP ACCURACY STANDARDS
FOR SALE BY U. S. GEOLOGICAL SURVEY, DENVER, COLORADO 80225, OR RESTON, VIRGINIA 22092
A FOLDER DESCRIBING TOPOGRAPHIC MAPS AND SYMBOLS IS AVAILABLE ON REQUEST

USGS
Historical File
Topographic Division

DEC 16 1980
1900