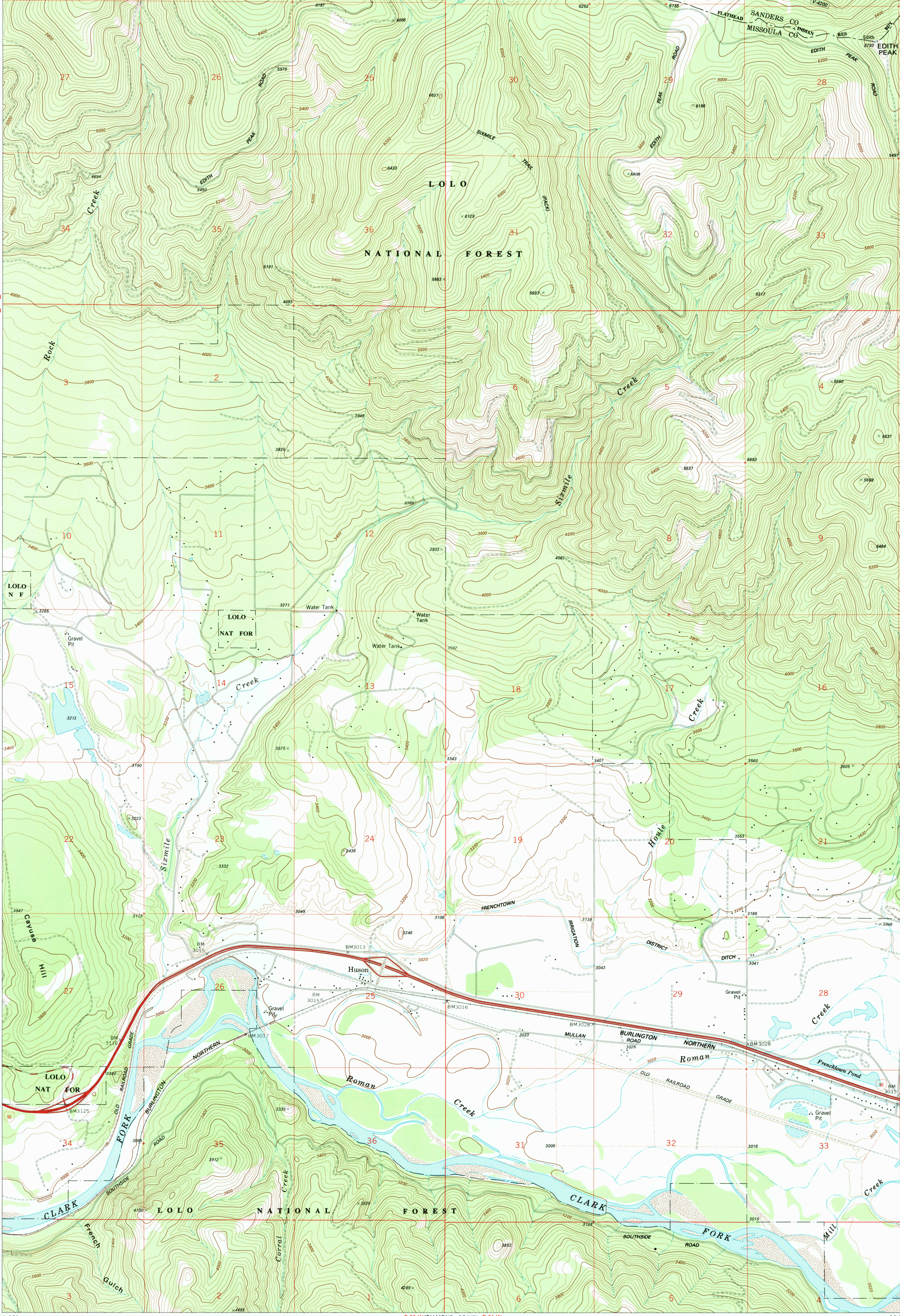
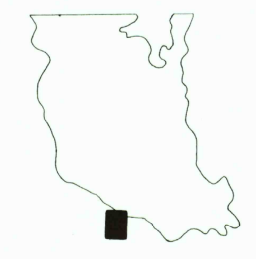
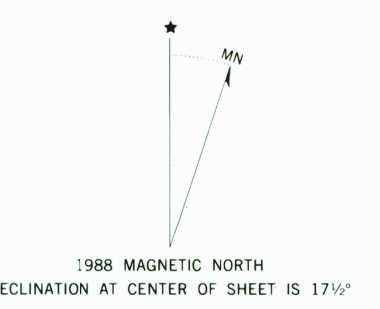
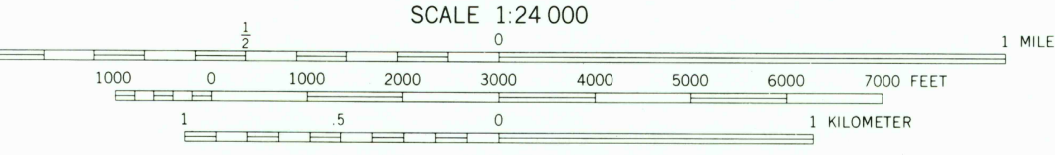


114°22'30" R 22 W (HEWOLF MOUNTAIN) R 21 W 114°15' 47°07'30"



LEGEND	
Paved road	County
Surfaced light duty or improved dirt road	Reservation
Unsurfaced dirt road	Tribal Wilderness
Four wheel drive trail	Total Primitive Area
Route designation shield	Power transmission line
Railroad	CFI Plot location
Single track	Aerial photo centers 1960 & 1981 flight
LAND LINES	Surveyed corner
Surveyed corner	Protected corner
Fence lines	Found corner



CONTOUR INTERVAL 40 FEET
DOTTED LINES REPRESENT 20 FOOT CONTOURS
DATUM IS MEAN SEA LEVEL
NATIONAL GEODETIC VERTICAL DATUM OF 1929
CONTROL BY USGS AND NOS/NOAA
Prepared by the Geographical Survey for
the Bureau of Indian Affairs, Flathead Agency
Compiled in 1988 from USGS 1:24,000-scale quadrangle dated 1984
Revised from aerial photographs taken 1974 and other source data provided by BIA

RETURN TO:
USGS NMD HISTORICAL MAP ARCHIVES

HUSON, MONT.
FLATHEAD INDIAN RESERVATION