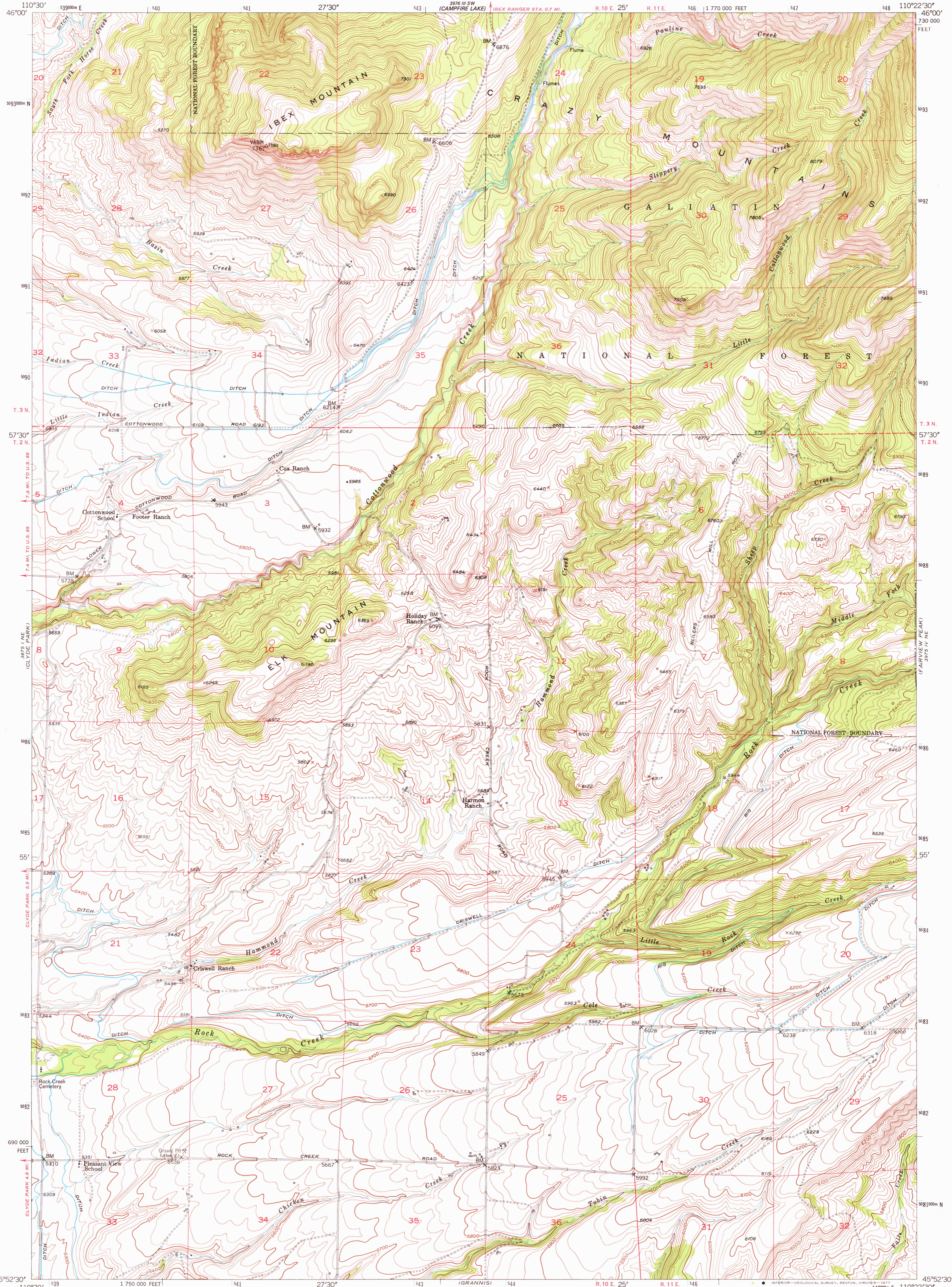


UNITED STATES
DEPARTMENT OF THE INTERIOR
GEOLOGICAL SURVEY

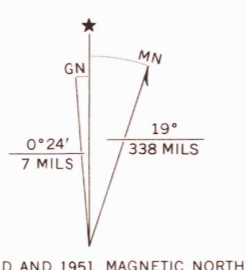
IBEX MOUNTAIN QUADRANGLE
MONTANA-PARK CO.
7.5 MINUTE SERIES (TOPOGRAPHIC)



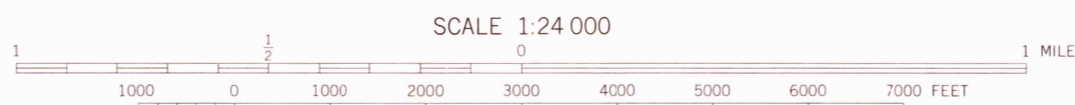
Mapped, edited, and published by the Geological Survey as part of the Department of the Interior program for the development of the Missouri River Basin Control by USGS and USC&GS

Topography from aerial photographs by multiplex methods Aerial photographs taken 1948. Field check 1951 Polyconic projection. 1927 North American datum 10,000 foot grid based on Texas coordinate system, south zone

1000-meter Universal Transverse Mercator grid ticks, zone 12, shown in blue Dashed land lines indicate approximate locations



UTM GRID AND 1951 MAGNETIC NORTH DECLINATION AT CENTER OF SHEET



SCALE 1:24 000
CONTOUR INTERVAL 20 FEET
NATIONAL GEODETIC VERTICAL DATUM OF 1929



QUADRANGLE LOCATION

ROAD CLASSIFICATION

Heavy-duty	4 LANE 16 LANE	Light-duty
Medium-duty	4 LANE 16 LANE	Unimproved dirt
U. S. Route		State Route

IBEX MOUNTAIN, MONT.
N4552.5-W11022.5/7.5

USGS
Historical Files
Topographic Division
1951
AMS 3975 IV NW - SERIES V894

JUN 13 1977
1300