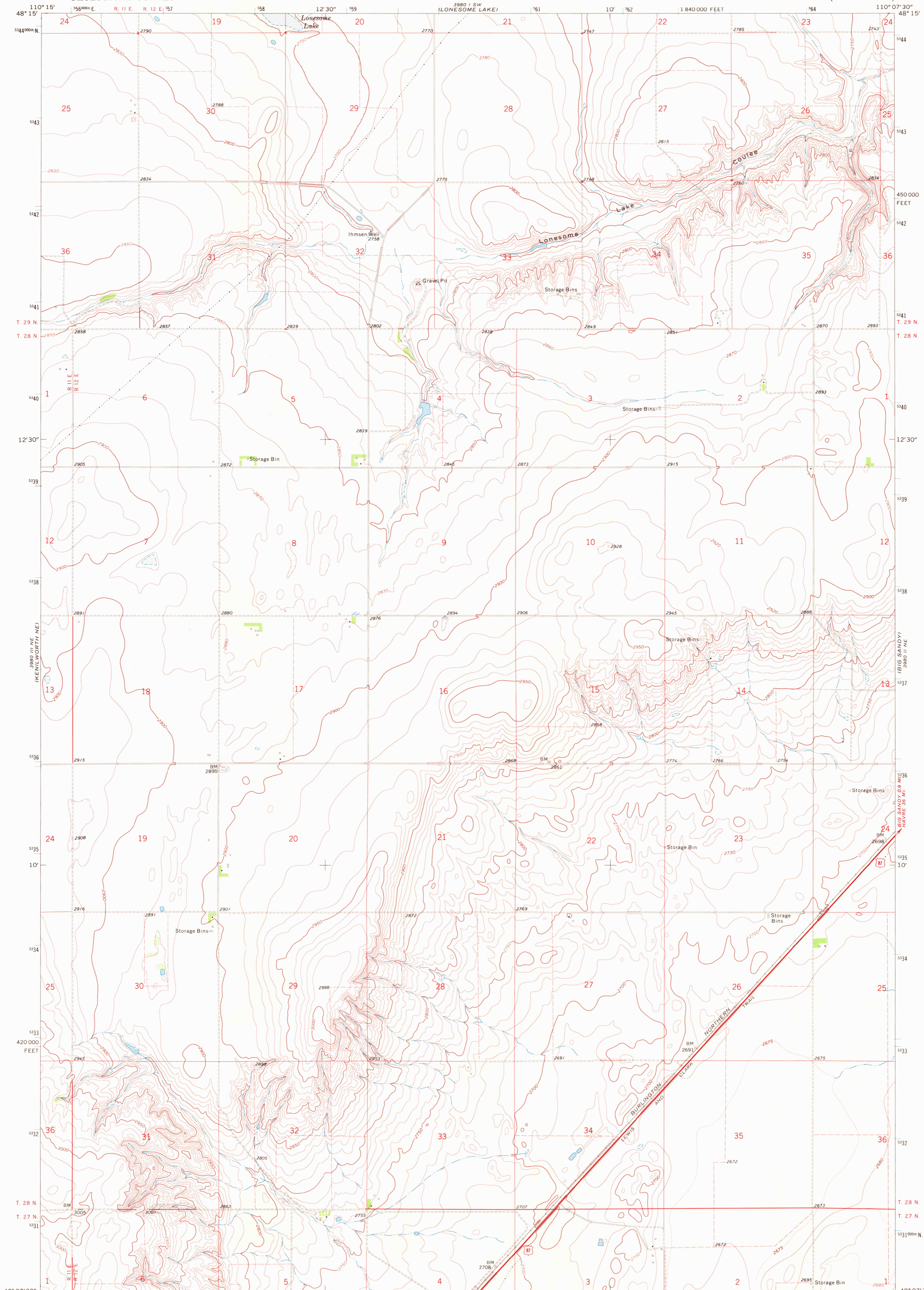
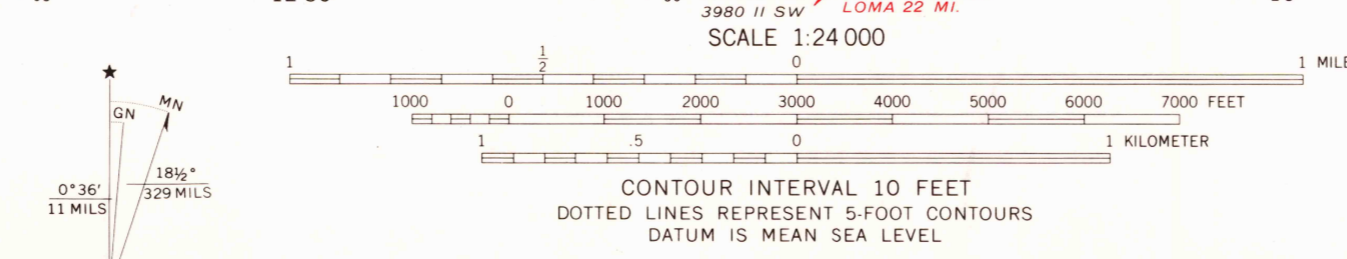


UNITED STATES  
DEPARTMENT OF THE INTERIOR  
GEOLOGICAL SURVEY

IHMSSEN WELL QUADRANGLE  
MONTANA—CHOUTEAU CO.  
7.5 MINUTE SERIES (TOPOGRAPHIC)



Mapped, edited, and published by the Geological Survey as part of the Department of the Interior program for the development of the Missouri River Basin  
Control by USGS and USC&GS  
Topography by photogrammetric methods from aerial photographs taken 1968. Field checked 1969  
Polyconic projection. 1927 North American datum 10,000-foot grid based on Montana coordinate system, north zone  
1000-meter Universal Transverse Mercator grid ticks, zone 12, shown in blue  
Fine red dashed lines indicate selected fence lines



ROAD CLASSIFICATION  
Primary highway, hard surface  
Secondary highway, hard surface  
Light duty road, hard or improved surface  
Unimproved road  
Interstate Route  
U. S. Route  
State Route



IHMSSEN WELL, MONT.  
N4807.5—W11007.5/7.5

HISTORICAL  
U.S.G.S.  
FINE COPY  
TOPOGRAPHIC DIVISION

1969  
AMS 3980 II NW—SERIES V894  
APR 9 1979