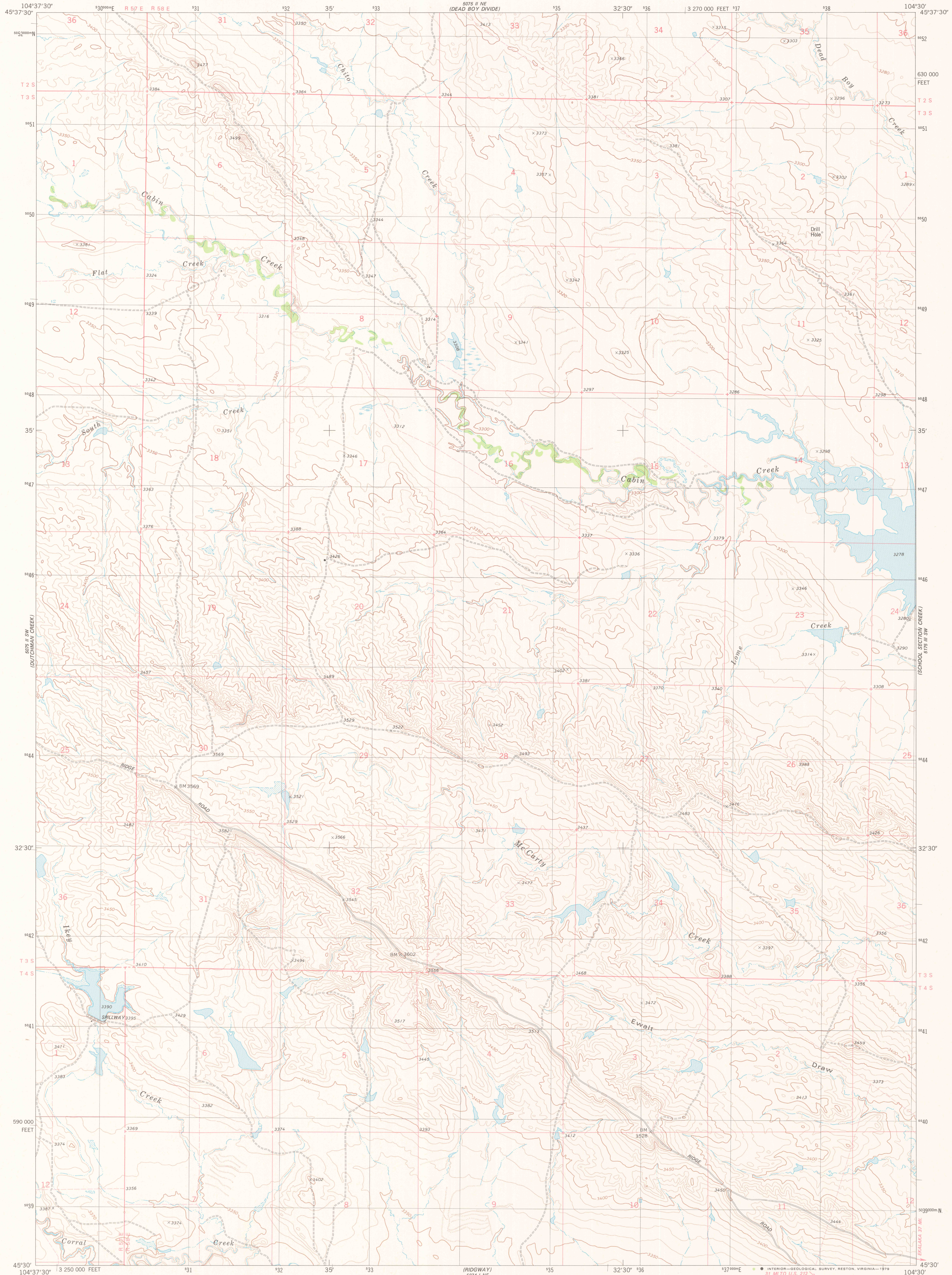


UNITED STATES
DEPARTMENT OF THE INTERIOR
GEOLOGICAL SURVEY

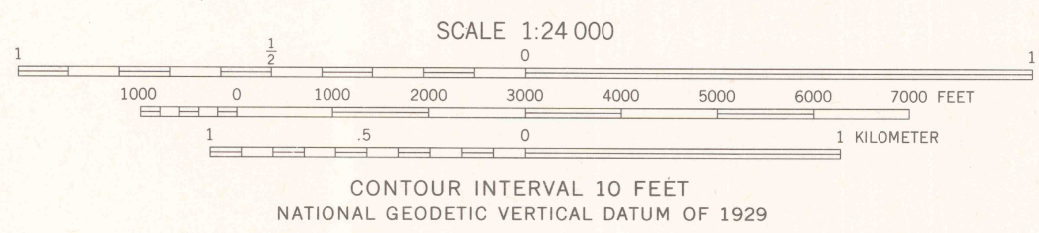
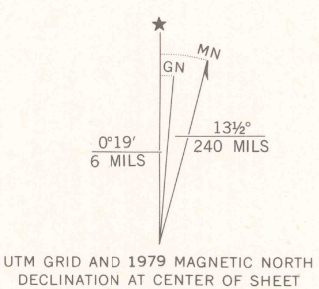


IKEY CREEK QUADRANGLE
MONTANA—CARTER CO.
7.5 MINUTE SERIES (TOPOGRAPHIC)



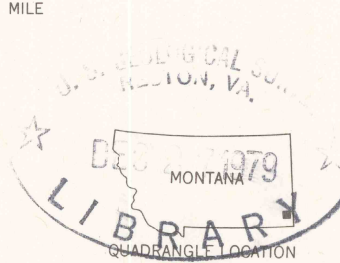
Mapped, edited, and published by the Geological Survey

Control by USGS and NCS/NOAA
Topography by photogrammetric methods from aerial photographs taken 1972. Field checked 1973. Map edited 1979
Projection and 10,000-foot grid ticks: Montana coordinate system, south zone (Lambert conformal conic) 1000-meter Universal Transverse Mercator grid, zone 13 1927 North American datum
Fine red dashed lines indicate selected fence lines
Areas covered by dashed light-blue pattern are subject to controlled inundation



ROAD CLASSIFICATION

- Primary highway, hard surface
- Light-duty road, hard or improved surface
- Secondary highway, hard surface
- Unimproved road
- Interstate Route
- U. S. Route
- State Route



THIS MAP COMPLIES WITH NATIONAL MAP ACCURACY STANDARDS
FOR SALE BY U. S. GEOLOGICAL SURVEY, DENVER, COLORADO 80225, OR RESTON, VIRGINIA 22092
A FOLDER DESCRIBING TOPOGRAPHIC MAPS AND SYMBOLS IS AVAILABLE ON REQUEST

IKEY CREEK, MONT.
N4530—W10430/7.5

1979

DMA 5075 II 8E—SERIES V894