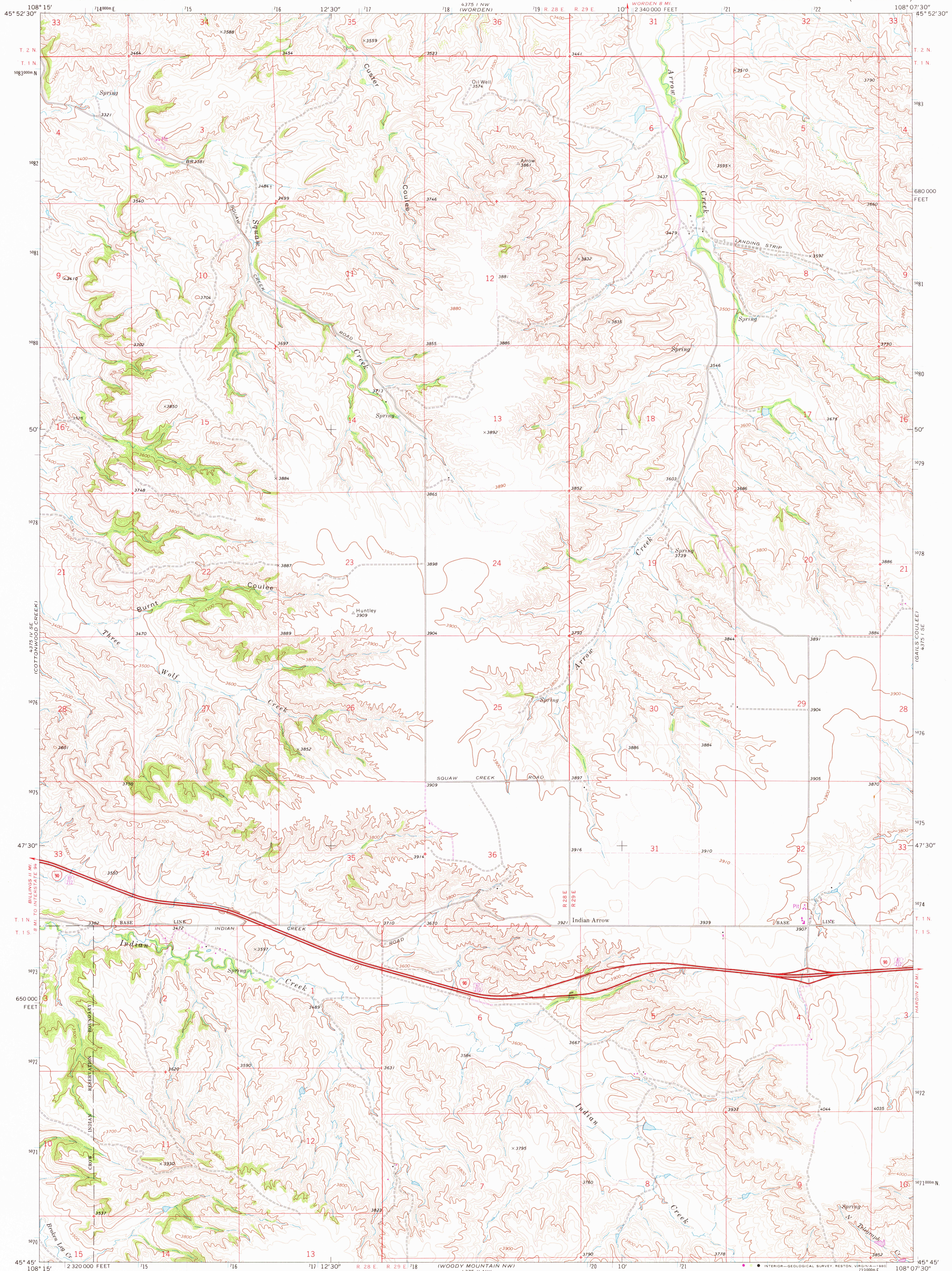


UNITED STATES  
DEPARTMENT OF THE INTERIOR  
GEOLOGICAL SURVEY

INDIAN ARROW QUADRANGLE  
MONTANA—YELLOWSTONE CO.  
7.5 MINUTE SERIES (TOPOGRAPHIC)



Mapped, edited, and published by the Geological Survey  
Control by USGS and USC&GS

Topography by photogrammetric methods from aerial  
photographs taken 1968. Field checked 1969

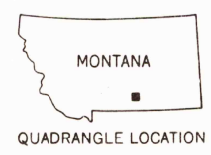
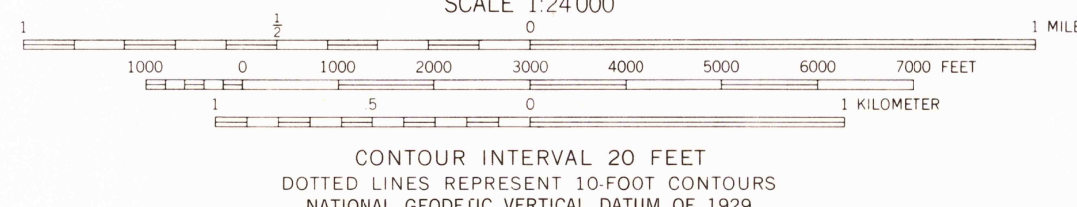
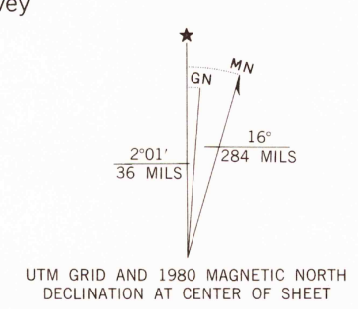
Polyconic projection. 1927 North American datum  
10,000-foot grid based on Montana coordinate system,  
south zone

1000-meter Universal Transverse Mercator grid ticks,  
zone 12, shown in blue

To place on the predicted North American Datum 1983  
move the projection lines 8 meters north and  
53 meters east as shown by dashed corner ticks

There may be private inholdings within the boundaries of  
the National or State reservations shown on this map

Revisions shown in purple compiled from aerial photographs taken  
1978. Map edited 1980. This information not field checked



ROAD CLASSIFICATION

|  |  |
|--|--|
| Primary highway, all weather, hard surface | Light-duty road, all weather, improved surface |
| Unimproved road, fair or dry weather       | Interstate Route                               |
|  | U. S. Route                                    |

INDIAN ARROW, MONT.  
N4545-W10807.5/7.5

1969  
PHOTOREVISED 1980  
DMA 4375 1 SW—SERIES V894

JAN 29 1981  
2100