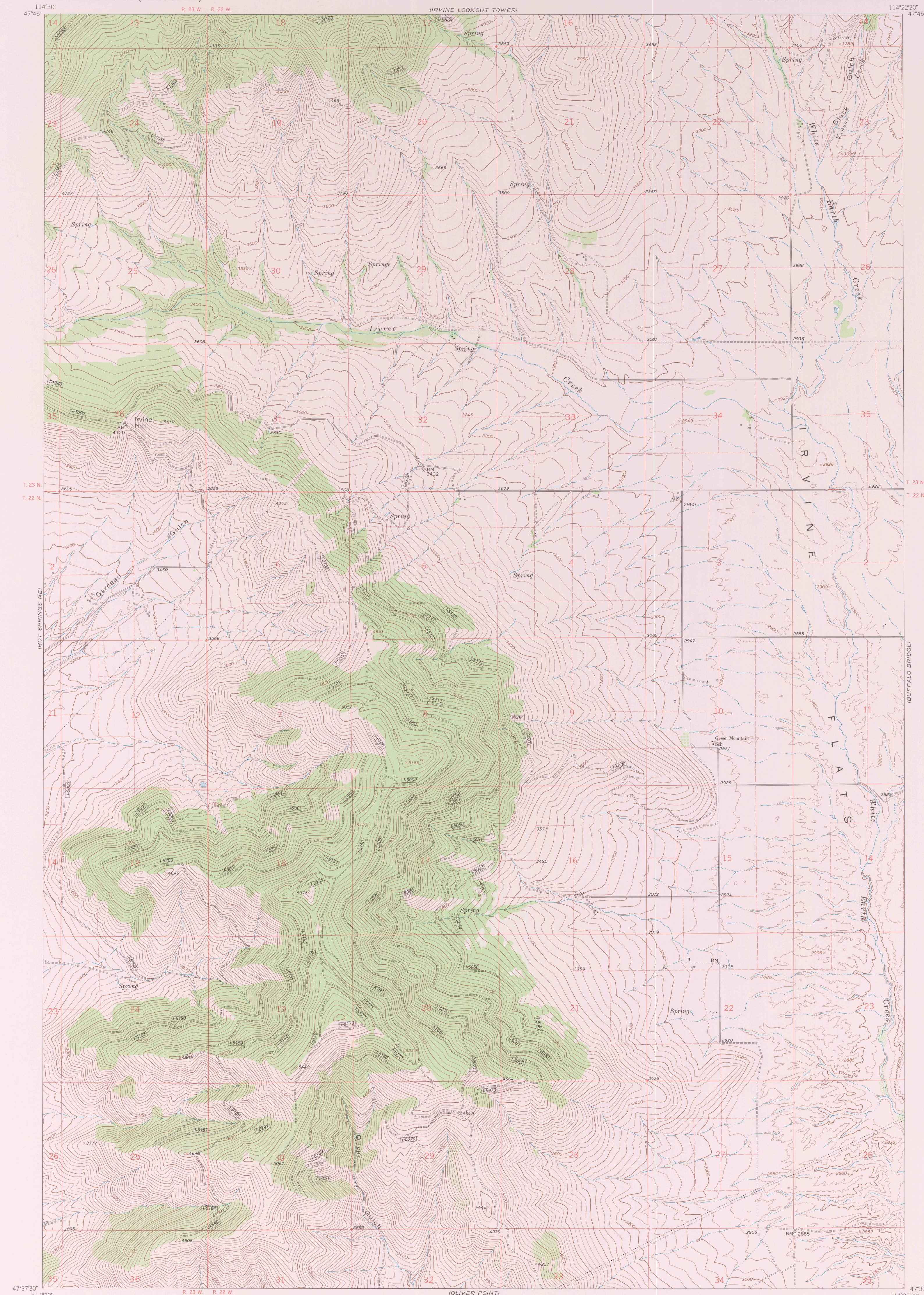
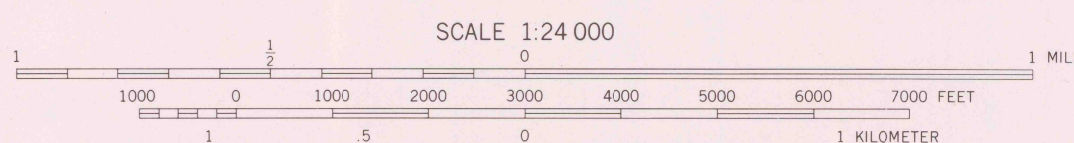


IRVINE HILL QUADRANGLE  
FLATHEAD INDIAN RESERVATION  
7.5 MINUTE SERIES (TOPOGRAPHIC)

UNITED STATES  
DEPARTMENT OF THE INTERIOR  
BUREAU OF INDIAN AFFAIRS



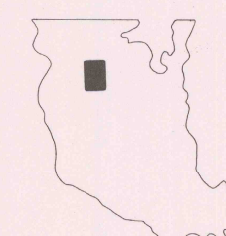
ROADS	
Paved road	—
Unimproved dirt road	---
Four wheel drive trail	---
Route designation shield	—
RAILROADS	
Single track	—
Double track	—
Protected	—
Fence lines	—
BOUNDARIES	
County	—
Reservation	—
Tribal Watershed	—
Tribal Primitive Area	—
Power transmission line	—
CFI Plot location	—
Aerial photo centers 1980 & 1981 flight	—
Indicated corner	—
Found corner	—



CONTOUR INTERVAL 40 FEET  
DOTTED LINES REPRESENT 20-FOOT CONTOURS  
DATUM IS MEAN SEA LEVEL  
NATIONAL GEODETIC VERTICAL DATUM OF 1929  
CONTROL BY USGS AND NOS/NOAA

Prepared by the Geological Survey for  
the Bureau of Indian Affairs, Flathead Agency  
Compiled in 1989 from USGS 1:24,000-scale quadrangle dated 1965  
Revised from aerial photographs taken 1977 and other source data provided by BIA

1989 MAGNETIC NORTH  
DECLINATION AT CENTER OF SHEET IS 18°



IRVINE HILL, MONT.  
FLATHEAD INDIAN RESERVATION  
LAKE CO.

RETURN TO:  
USGS M&D HISTORICAL MAP ARCHIVES