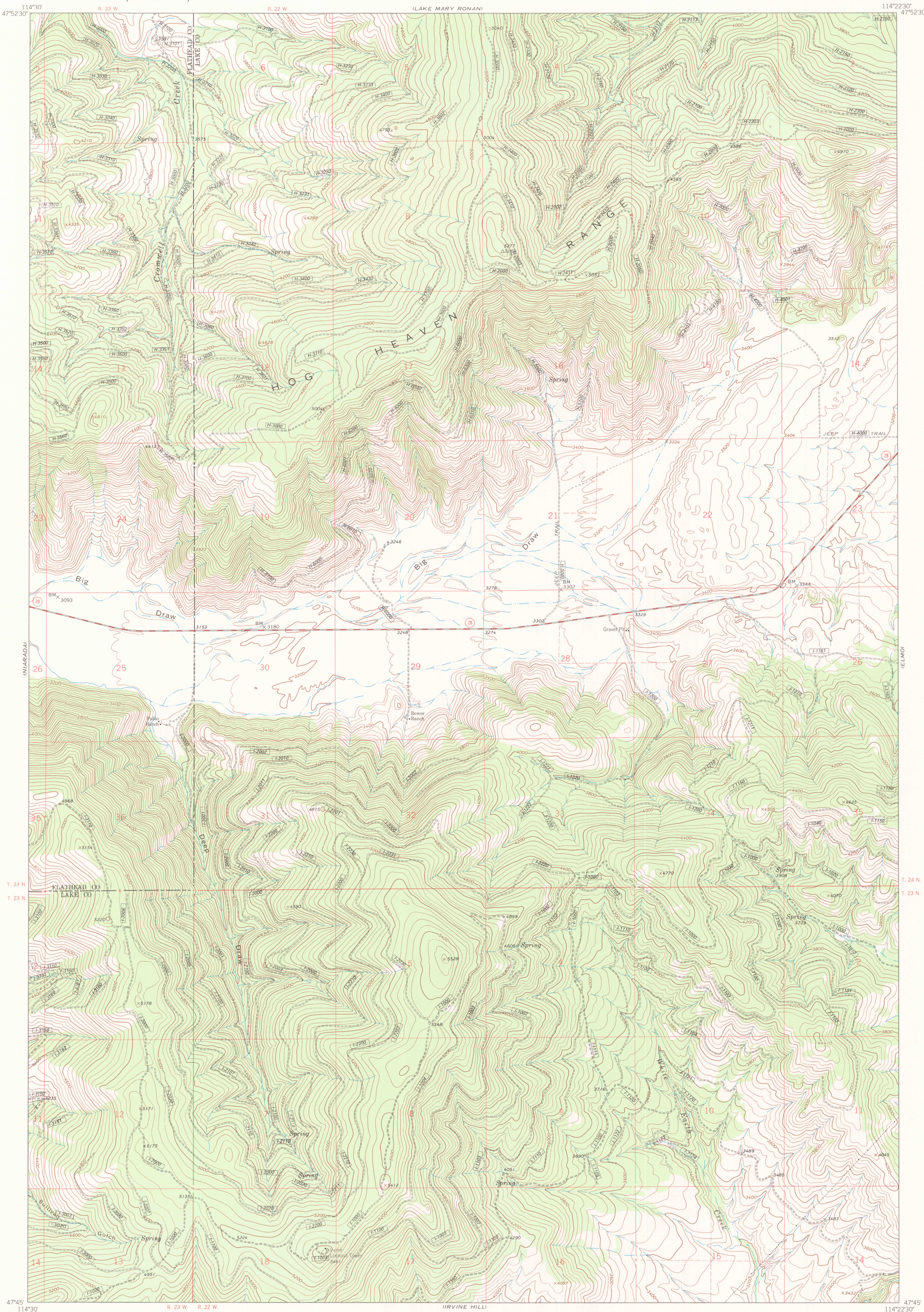


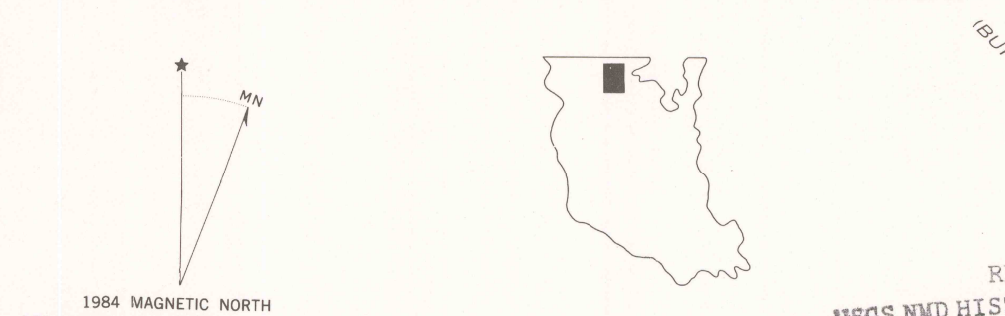
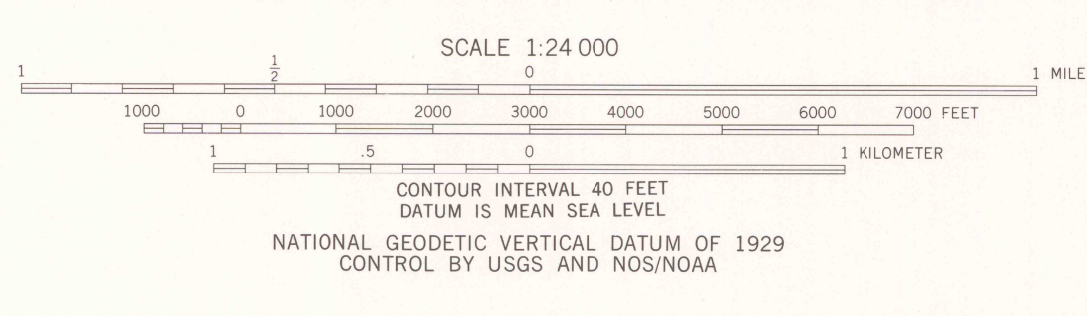
IRVINE LOOKOUT TOWER QUADRANGLE
 FLATHEAD INDIAN RESERVATION
 7.5 MINUTE SERIES (TOPOGRAPHIC)

UNITED STATES
 DEPARTMENT OF THE INTERIOR
 BUREAU OF INDIAN AFFAIRS



LEGEND

	ROADS		BOUNDARIES



Prepared by the Geological Survey for
 the Bureau of Indian Affairs, Flathead Agency
 Compiled in 1982 from USGS 1:24,000-scale quadrangle dated 1964
 Revised from aerial photographs taken 1977 and other source data provided by BIA

IRVINE LOOKOUT TOWER, MONT.
 FLATHEAD INDIAN RESERVATION