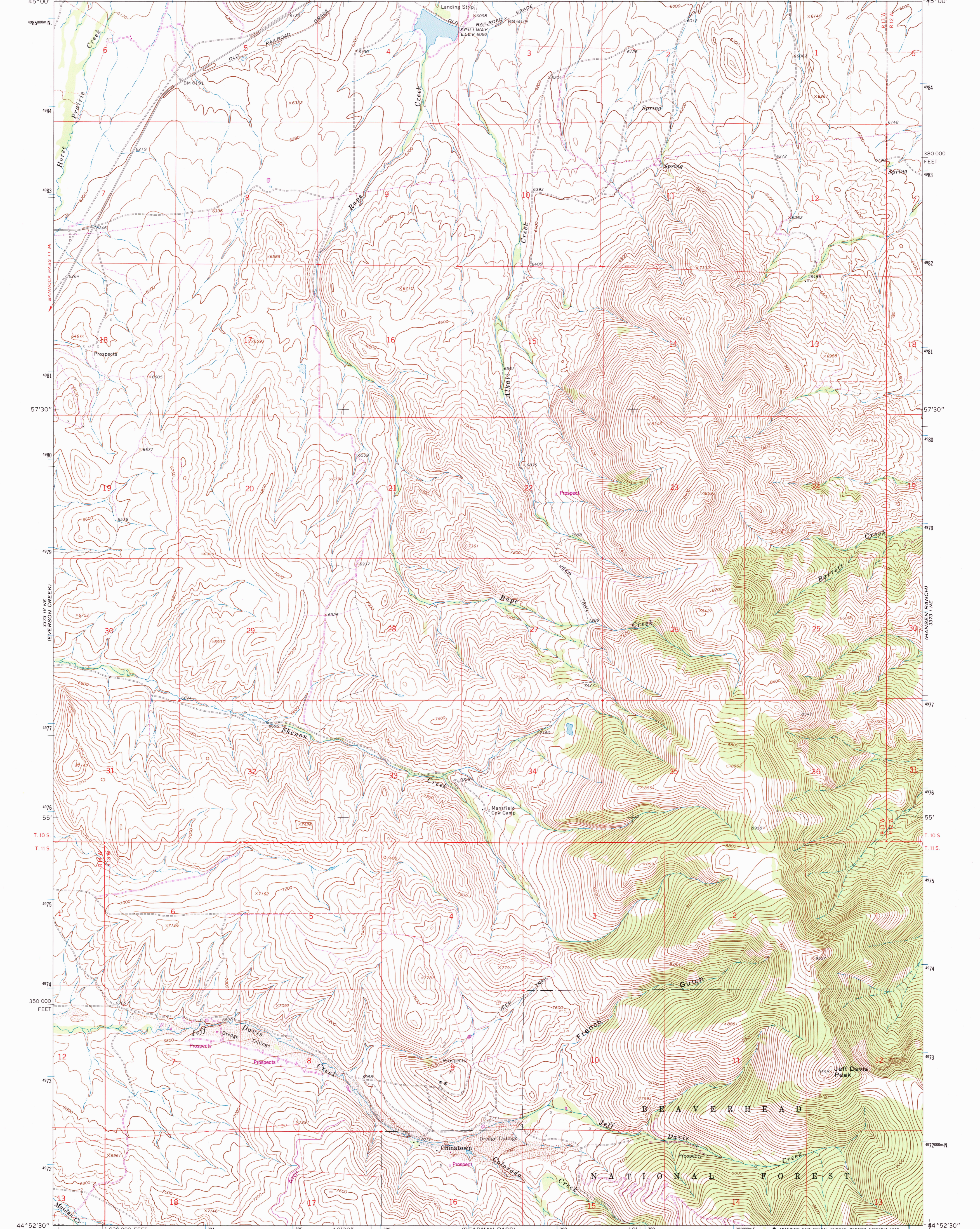
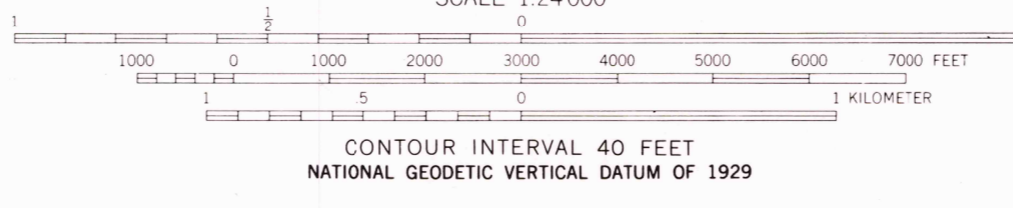
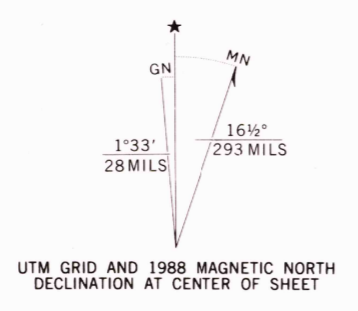


3374 SE (GRANT)
113° 15' 00" W

3374 SW (BACHELOR MOUNTAIN)
113° 07' 30" W



113° 15' 00" W
44° 52' 30" N
R. 14 W. R. 13 W.
MAPPED, EDITED, AND PUBLISHED BY THE GEOLOGICAL SURVEY
Control by USGS and NOS/NOAA
Topography by photogrammetric methods from aerial photographs taken 1964. Field checked 1965
Polyconic projection. 1927 North American Datum
10,000-foot grid based on Montana coordinate system, south zone
1000-meter Universal Transverse Mercator grid ticks, zone 12, shown in blue
Fine red dashed lines indicate selected fence lines
To place on the predicted North American Datum 1983 move the projection lines 12 meters north and 69 meters east as shown by dashed corner ticks
There may be private inholdings within the boundaries of the National or State reservations shown on this map



ROAD CLASSIFICATION
Light-duty ————— Unimproved dirt - - - - -

THIS MAP COMPLIES WITH NATIONAL MAP ACCURACY STANDARDS
FOR SALE BY U.S. GEOLOGICAL SURVEY
DENVER, COLORADO 80225, OR RESTON, VIRGINIA 22092
A FOLDER DESCRIBING TOPOGRAPHIC MAPS AND SYMBOLS IS AVAILABLE ON REQUEST

Revisions shown in purple and woodland compiled from aerial photographs taken 1985 and other source data. Partial field check by U.S. Forest Service. Map edited 1988

JEFF DAVIS PEAK, MONT.
44113-H2-024
1965
PHOTOREVISED 1988
DMA 3373 I NW-SERIES V894

