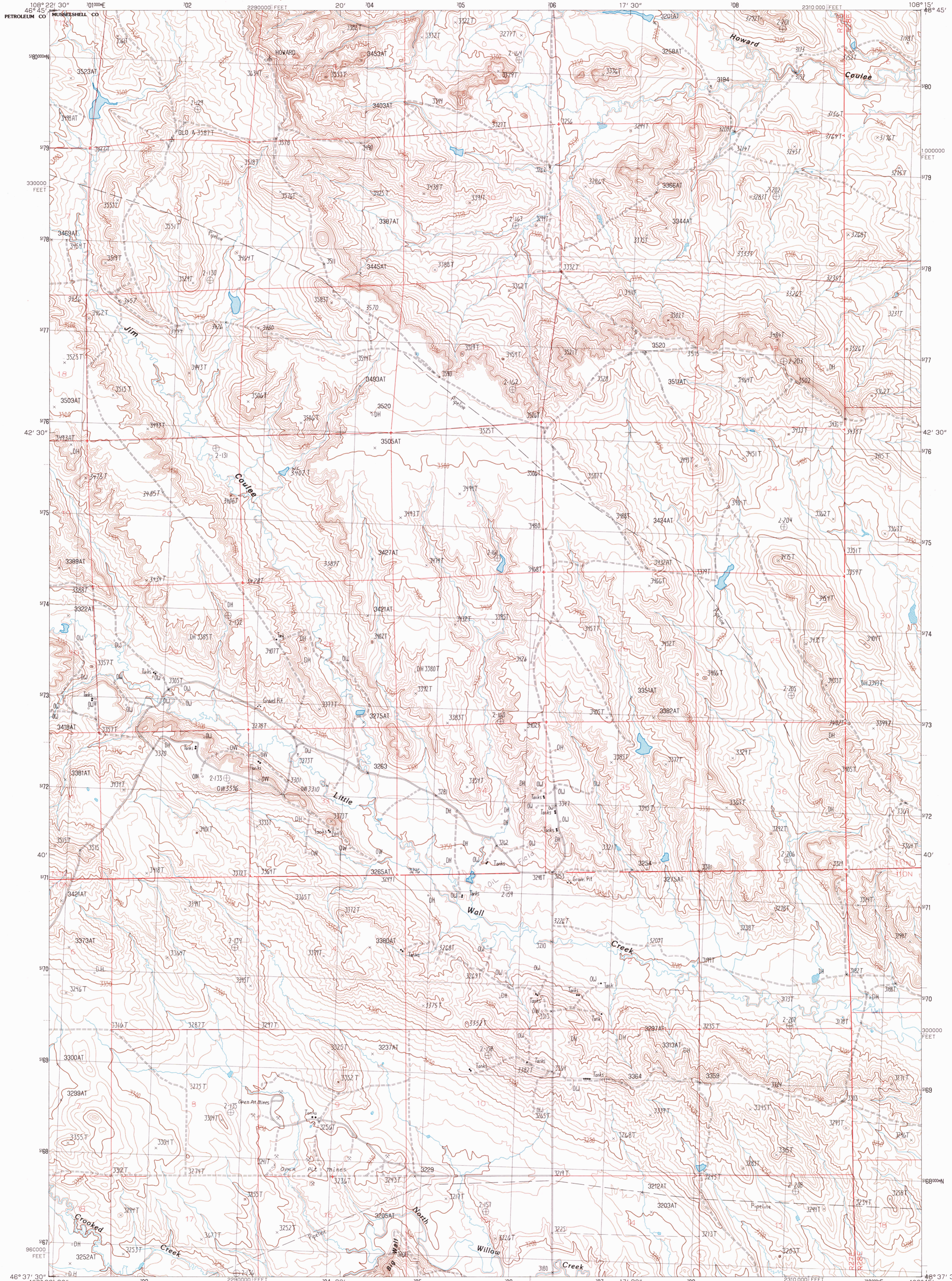


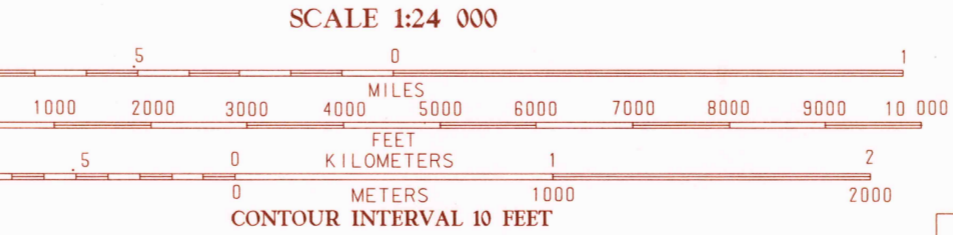
UNITED STATES
DEPARTMENT OF THE INTERIOR
GEOLOGICAL SURVEY

JIM COULEE QUADRANGLE
MONTANA
7.5 MINUTE SERIES (TOPOGRAPHIC)



PRODUCED BY THE UNITED STATES GEOLOGICAL SURVEY CONTROL BY U.S.G.S. NOS/NOAA COMPILED FROM AERIAL PHOTOGRAPHS TAKEN 1975 FIELD CHECKED 1978 MAP EDITED 1986 PROJECTION LAMBERT CONFORMAL CONIC GRID: 1000-METER UNIVERSAL TRANSVERSE MERCATOR ZONE 12 1000-FOOT STATE GRID TICKS MONTANA, SOUTH ZONE MONTANA, CENTRAL ZONE UTM GRID DECLINATION 1°57' EAST 1986 MAGNETIC NORTH DECLINATION 48° EAST VERTICAL DATUM NATIONAL GEODETIC VERTICAL DATUM OF 1989 HORIZONTAL DATUM 1927 NORTH AMERICAN DATUM To place on the predicted North American Datum of 1983, move the projection lines as shown by dashed corner ticks (7 meters north and 53 meters east) There may be private inholdings within the boundaries of any Federal and State Reservations shown on this map All marginal data and lettering generated and positioned by automated type placement procedures

PROVISIONAL MAP
Produced from original manuscript drawings. Information shown as of date of field check.



ROAD LEGEND
Improved Road
Unimproved Road
Trail
Interstate Route
U.S. Route
State Route

1	2	3	1	Haystack
2	3	4	2	Crowley Dam
3	4	5	3	Keller
4	5	6	4	Big Wall NW
5	6	7	5	Mudshelt NW
6	7	8	6	Big Wall West
7	8		7	Big Wall East
8			8	Delphi

JIM COULEE, MONTANA
PROVISIONAL EDITION 1986

USGS NMD HISTORICAL MAP
JUL 0 8 1986
REC'D FILE COPY

THIS MAP COMPLIES WITH NATIONAL MAP ACCURACY STANDARDS FOR SALE BY U.S. GEOLOGICAL SURVEY, DENVER, COLORADO 80225 OR RESTON, VIRGINIA 22092

ADJOINING 7.5 QUADRANGLE NAMES

46108-F3-T014