

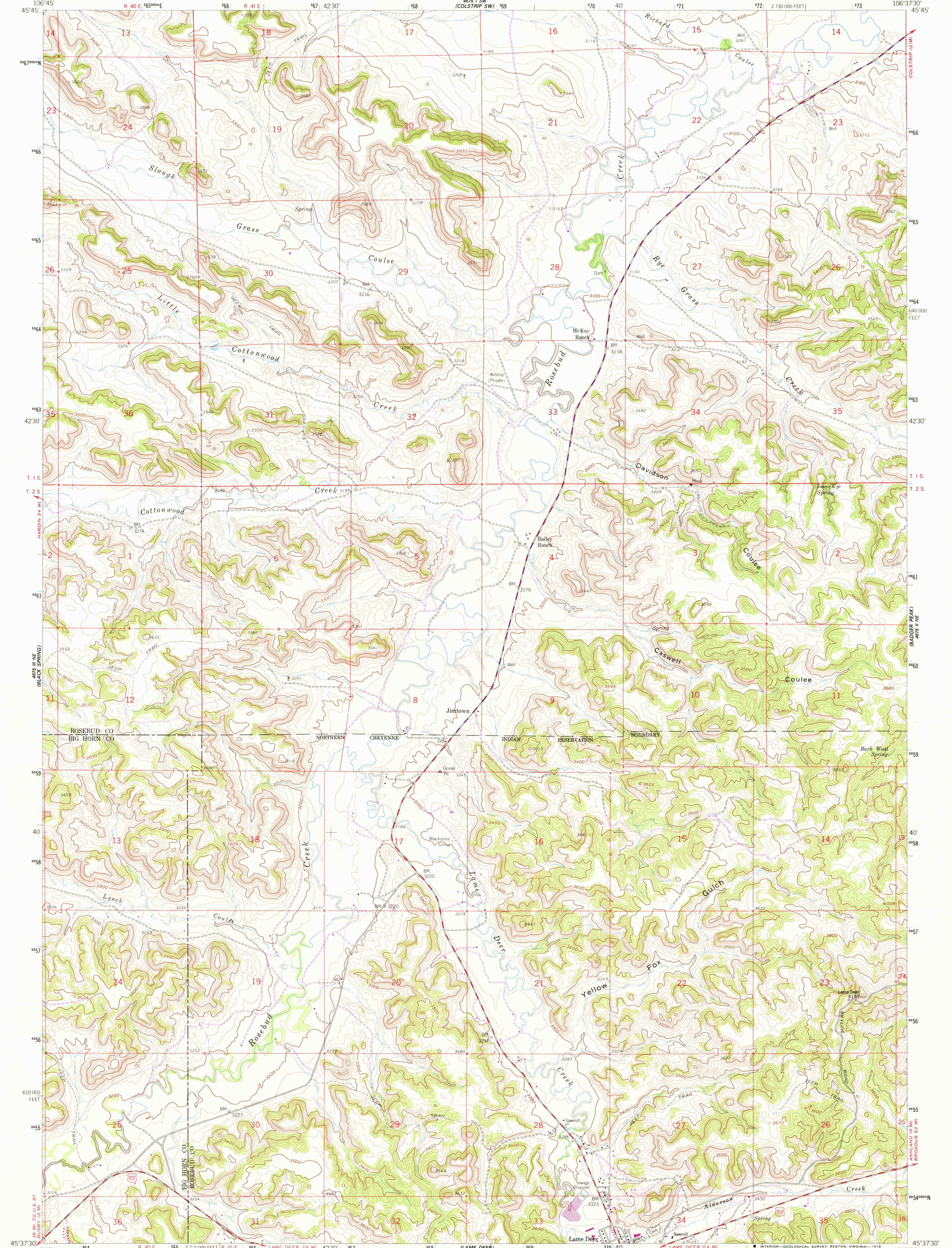
45° 45' N  
106° 45' W

UNITED STATES  
DEPARTMENT OF THE INTERIOR  
GEOLOGICAL SURVEY

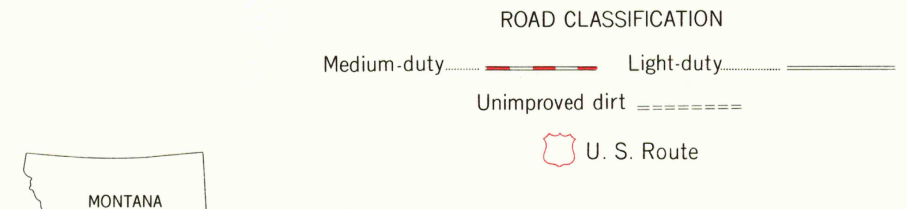
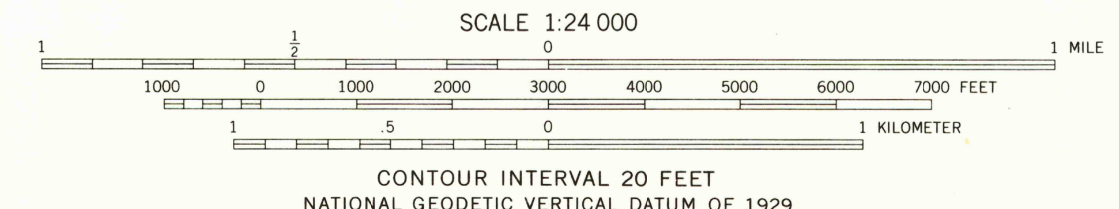
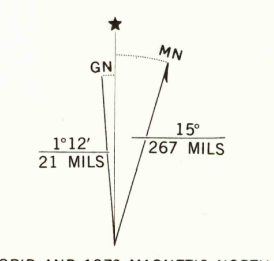


JIMTOWN QUADRANGLE  
MONTANA  
7.5 MINUTE SERIES (TOPOGRAPHIC)

45° 45' N  
106° 30' W



Maped, edited, and published by the Geological Survey as part of the Department of the Interior program for the development of the Missouri River Basin. Control by USGS and NOS/NOAA. Topography from aerial photographs by photogrammetric methods. Aerial photographs taken 1956. Field check 1958. Polyconic projection. 1927 North American datum. 10,000-foot grid based on Montana coordinate system, south zone. 1000-meter Universal Transverse Mercator grid ticks, zone 13, shown in blue. Unchecked elevations are shown in brown. Revisions shown in purple compiled from aerial photographs taken 1976. Map edited 1978. This information not field checked.



THIS MAP COMPLIES WITH NATIONAL MAP ACCURACY STANDARDS FOR SALE BY U.S. GEOLOGICAL SURVEY, DENVER, COLORADO 80225, OR RESTON, VIRGINIA 22092. A FOLDER DESCRIBING TOPOGRAPHIC MAPS AND SYMBOLS IS AVAILABLE ON REQUEST.

USGS Historical File Topographic Division. JIMTOWN, MONT. N4537.5-W10637.5/7.5. 1958. PHOTOREVISED 1978. AMS 4675 II NW--SERIES V694.

APR 26 1979

2650